

ARG66285 anti-IL1 beta antibody [SQab1748]

Package: 100 µg
Store at: -20°C

Summary

Product Description	Mouse Monoclonal antibody [SQab1748] recognizes IL1 beta
Tested Reactivity	Hu, Ms
Tested Application	ELISA, FACS, ICC/IF, IHC-P, WB
Specificity	Not cross-react with recombinant human IL-1 alpha in ELISA (5 µg/ml protein) and WB (100 ng protein).
Host	Mouse
Clonality	Monoclonal
Clone	SQab1748
Isotype	IgG2a
Target Name	IL1 beta
Species	Human
Immunogen	Recombinant Human IL1 beta protein.
Conjugation	Un-conjugated
Alternate Names	Interleukin-1 beta; IL1-BETA; IL-1; IL-1 beta; Catabolin; IL1F2

Application Instructions

Application table	Application	Dilution
	ELISA	1:3000 - 1:10000
	FACS	1:400 - 1:1000
	ICC/IF	1:400 - 1:1000
	IHC-P	Assay-dependent
	WB	1:2500 - 1:10000

Application Note * The dilutions indicate recommended starting dilutions and the optimal dilutions or concentrations should be determined by the scientist.

Properties

Form	Liquid
Buffer	PBS (pH 7.4) and 0.01% Thimerosal.
Preservative	0.01% Thimerosal
Concentration	1 mg/ml
Storage instruction	For continuous use, store undiluted antibody at 2-8°C for up to a week. For long-term storage, aliquot and store at -20°C or below. Storage in frost free freezers is not recommended. Avoid repeated freeze/thaw cycles. Suggest spin the vial prior to opening. The antibody solution should be gently mixed

before use.

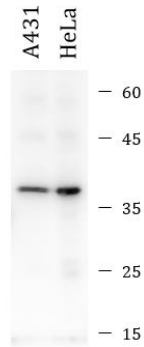
Note For laboratory research only, not for drug, diagnostic or other use.

Bioinformation

Gene Symbol	IL1B
Gene Full Name	interleukin 1, beta
Background	IL1 beta protein is a member of the interleukin 1 cytokine family. This cytokine is produced by activated macrophages as a proprotein, which is proteolytically processed to its active form by caspase 1 (CASP1/ICE). This cytokine is an important mediator of the inflammatory response, and is involved in a variety of cellular activities, including cell proliferation, differentiation, and apoptosis. The induction of cyclooxygenase-2 (PTGS2/COX2) by this cytokine in the central nervous system (CNS) is found to contribute to inflammatory pain hypersensitivity. This gene and eight other interleukin 1 family genes form a cytokine gene cluster on chromosome 2. [provided by RefSeq, Jul 2008]
Function	IL1 beta is a potent proinflammatory cytokine. Initially discovered as the major endogenous pyrogen, induces prostaglandin synthesis, neutrophil influx and activation, T-cell activation and cytokine production, B-cell activation and antibody production, and fibroblast proliferation and collagen production. Promotes Th17 differentiation of T-cells. Synergizes with IL12/interleukin-12 to induce IFNG synthesis from T-helper 1 (Th1) cells (PubMed:10653850). [UniProt]
Highlight	Related Antibody Duos and Panels: ARG30330 Pyroptosis Antibody Panel Related products: IL1 beta antibodies ; IL1 beta ELISA Kits ; IL1 beta Duos / Panels ; IL1 beta recombinant proteins ; Anti-Mouse IgG secondary antibodies ; Related news: HMGB1 in inflammation Inflammatory Cytokines Exploring Antiviral Immune Response RIP1 activation and pathogenesis of NASH
Research Area	Pyroptosis Study antibody
Calculated Mw	31 kDa
PTM	Activation of the IL1B precursor involves a CASP1-catalyzed proteolytic cleavage. Processing and secretion are temporarily associated. [UniProt]

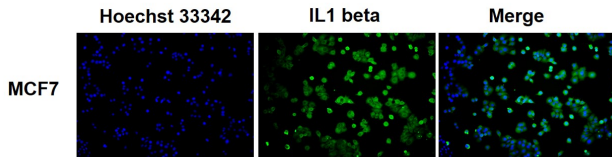
Images





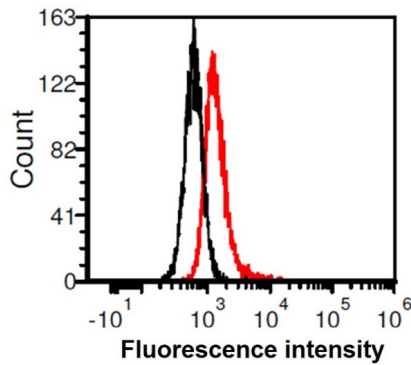
ARG66285 anti-IL1 beta antibody [SQab1748] WB image

Western blot: 20 µg of A431 and HeLa cell lysates stained with ARG66285 anti-IL1 beta antibody [SQab1748] at 1:4000 dilution.



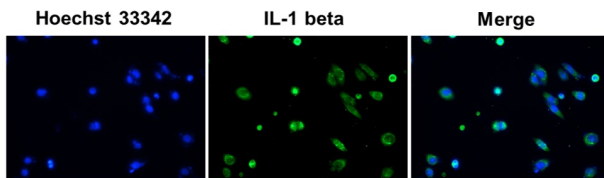
ARG66285 anti-IL1 beta antibody [SQab1748] ICC/IF image

Immunofluorescence: MCF7 cells stained with ARG66285 anti-IL1 beta antibody [SQab1748] at 1:200 dilution.



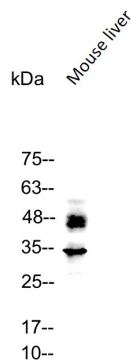
ARG66285 anti-IL1 beta antibody [SQab1748] FACS image

Flow Cytometry: HeLa cells stained with ARG66285 anti-IL1 beta antibody [SQab1748] at 1 µg/ml (red) and without antibody control (black).



ARG66285 anti-IL1 beta antibody [SQab1748] ICC/IF image

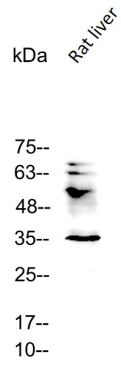
Immunofluorescence: HeLa cells were fixed in 4% PFA, permeabilized with PBS containing 0.1% Triton X-100. Cells were stained with ARG66285 anti-IL1 beta antibody [SQab1748] (green) at 1:200 dilution, and cell nuclei were stained with Hoechst 33342 (blue).



ARG66285 anti-IL1 beta antibody [SQab1748] WB image

Western blot: 50 µg of Mouse liver lysate stained with ARG66285 anti-IL1 beta antibody [SQab1748] at 1:5000 dilution.

ARG66285 anti-IL1 beta antibody [SQab1748] WB image



Western blot: 50 µg of Rat liver lysate stained with ARG66285 anti-IL1 beta antibody [SQab1748] at 1:5000 dilution.