

ARG66322 anti-CD34 antibody [SQab1870]

Package: 100 µl, 50 µl
Store at: -20°C

Summary

Product Description	Recombinant Rabbit Monoclonal antibody [SQab1870] recognizes CD34
Tested Reactivity	Hu
Tested Application	FACS, IHC-P
Host	Rabbit
Clonality	Monoclonal
Clone	SQab1870
Isotype	IgG
Target Name	CD34
Species	Human
Immunogen	Synthetic peptide around the C-terminus of CD34.
Conjugation	Un-conjugated
Alternate Names	Hematopoietic progenitor cell antigen CD34; CD antigen CD34

Application Instructions

Application table	Application	Dilution
	FACS	1:50 - 1:200
	IHC-P	1:800 - 1:1600

Application Note IHC-P: Antigen Retrieval: Heat mediated was performed using Tris/EDTA buffer pH 9.0.
* The dilutions indicate recommended starting dilutions and the optimal dilutions or concentrations should be determined by the scientist.

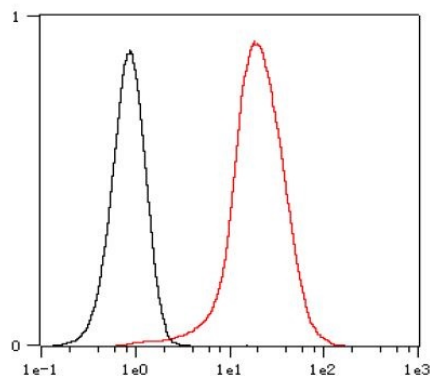
Properties

Form	Liquid
Purification	Purification with Protein A.
Buffer	PBS, 0.01% Sodium azide, 40% Glycerol and 0.05% BSA.
Preservative	0.01% Sodium azide
Stabilizer	40% Glycerol and 0.05% BSA
Storage instruction	For continuous use, store undiluted antibody at 2-8°C for up to a week. For long-term storage, aliquot and store at -20°C. Storage in frost free freezers is not recommended. Avoid repeated freeze/thaw cycles. Suggest spin the vial prior to opening. The antibody solution should be gently mixed before use.
Note	For laboratory research only, not for drug, diagnostic or other use.

Bioinformation

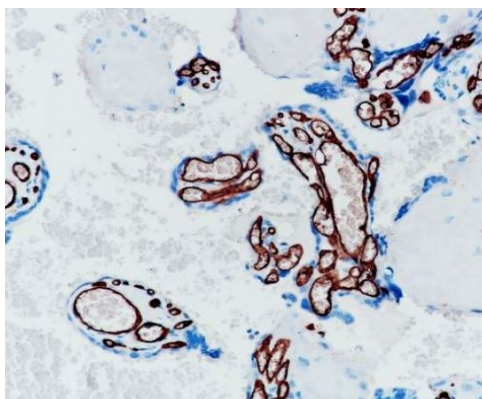
Gene Symbol	CD34
Gene Full Name	CD34 molecule
Background	CD34 protein may play a role in the attachment of stem cells to the bone marrow extracellular matrix or to stromal cells. This single-pass membrane protein is highly glycosylated and phosphorylated by protein kinase C. Two transcript variants encoding different isoforms have been found for this gene. [provided by RefSeq, Aug 2011]
Function	CD34 is a possible adhesion molecule with a role in early hematopoiesis by mediating the attachment of stem cells to the bone marrow extracellular matrix or directly to stromal cells. Could act as a scaffold for the attachment of lineage specific glycans, allowing stem cells to bind to lectins expressed by stromal cells or other marrow components. Presents carbohydrate ligands to selectins. [UniProt]
Highlight	Related products: CD34 antibodies ; CD34 ELISA Kits ; CD34 Duos / Panels ; Anti-Rabbit IgG secondary antibodies ; Related news: Cancer Pathology Markers (SQ clones)
Research Area	Cancer antibody; Cell Biology and Cellular Response antibody; Controls and Markers antibody; Developmental Biology antibody; Immune System antibody; Neuroscience antibody; Pro-B Cell Marker antibody; Endothelial Cell Marker antibody; Angiogenesis Study antibody
Calculated Mw	41 kDa
PTM	Highly glycosylated. Phosphorylated on serine residues by PKC. [UniProt]

Images



ARG66322 anti-CD34 antibody [SQab1870] FACS image

Flow Cytometry: Jurkat cells were fixed with 4% paraformaldehyde for 10 mins. The cells were stained with ARG66322 anti-CD34 antibody [SQab1870] (red) at 1:200 dilution in 1x PBS/1% BSA for 30 min at RT, followed by Alexa Fluor® 488 labelled secondary antibody. Unlabelled sample (black) was used as a control.



ARG66322 anti-CD34 antibody [SQab1870] IHC-P image

Immunohistochemistry: Formalin-fixed and paraffin-embedded placenta tissue stained with ARG66322 anti-CD34 antibody [SQab1870] at 1:1,600 dilution. Antigen Retrieval: Heat mediated was performed using Tris/EDTA buffer pH 9.0.