

**ARG66335**  
**anti-EpCAM antibody [SQab1883]**Package: 100 µl, 50 µl  
Store at: -20°C

### Summary

Product Description	Recombinant Rabbit Monoclonal antibody [SQab1883] recognizes EpCAM
Tested Reactivity	Hu
Tested Application	FACS, IHC-P, IP, WB
Host	Rabbit
Clonality	Monoclonal
Clone	SQab1883
Isotype	IgG
Target Name	EpCAM
Species	Human
Immunogen	Synthetic peptide corresponding to aa. 1-100 of Human EPCAM.
Conjugation	Un-conjugated
Alternate Names	MIC18; EGP; Tumor-associated calcium signal transducer 1; Epithelial glycoprotein 314; KSA; Ep-CAM; Epithelial cell surface antigen; Adenocarcinoma-associated antigen; HNPCC8; Cell surface glycoprotein Trop-1; EGP40; TACSTD1; KS1/4; hEGP314; Major gastrointestinal tumor-associated protein GA733-2; M4S1; MK-1; Epithelial glycoprotein; KS 1/4 antigen; ESA; DIAR5; EGP314; Epithelial cell adhesion molecule; EGP-2; TROP1; CD antigen CD326

### Application Instructions

Application table	Application	Dilution
	FACS	1:800 - 1:2000
	IHC-P	1:1600 - 1:3200
	IP	1:50
	WB	1:2000 - 1:5000
Application Note	IHC-P: Antigen Retrieval: Heat mediated was performed using Tris/EDTA buffer pH 9.0. * The dilutions indicate recommended starting dilutions and the optimal dilutions or concentrations should be determined by the scientist.	

### Properties

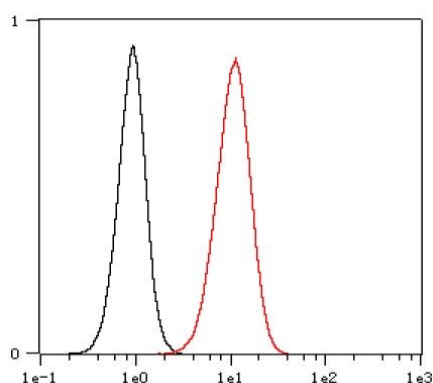
Form	Liquid
Purification	Purification with Protein A.
Buffer	PBS, 0.01% Sodium azide, 40% Glycerol and 0.05% BSA.
Preservative	0.01% Sodium azide
Stabilizer	40% Glycerol and 0.05% BSA

Storage instruction	For continuous use, store undiluted antibody at 2-8°C for up to a week. For long-term storage, aliquot and store at -20°C. Storage in frost free freezers is not recommended. Avoid repeated freeze/thaw cycles. Suggest spin the vial prior to opening. The antibody solution should be gently mixed before use.
Note	For laboratory research only, not for drug, diagnostic or other use.

## Bioinformation

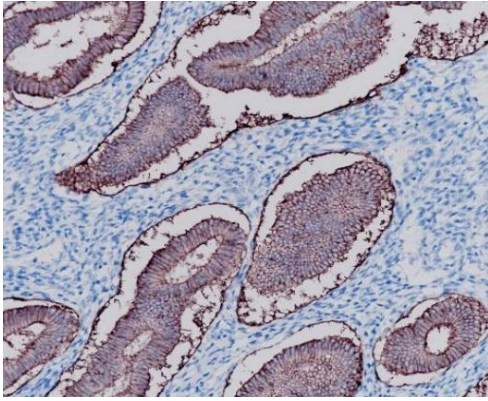
Gene Symbol	EPCAM
Gene Full Name	epithelial cell adhesion molecule
Background	EpCAM is a carcinoma-associated antigen and is a member of a family that includes at least two type I membrane proteins. This antigen is expressed on most normal epithelial cells and gastrointestinal carcinomas and functions as a homotypic calcium-independent cell adhesion molecule. The antigen is being used as a target for immunotherapy treatment of human carcinomas. Mutations in this gene result in congenital tufting enteropathy. [provided by RefSeq, Dec 2008]
Function	EpCAM may act as a physical homophilic interaction molecule between intestinal epithelial cells (IECs) and intraepithelial lymphocytes (IELs) at the mucosal epithelium for providing immunological barrier as a first line of defense against mucosal infection. Plays a role in embryonic stem cells proliferation and differentiation. Up-regulates the expression of FABP5, MYC and cyclins A and E. [UniProt]
Highlight	Related products: <a href="#">EPCAM antibodies</a> ; <a href="#">EPCAM ELISA Kits</a> ; <a href="#">EPCAM Duos / Panels</a> ; <a href="#">Anti-Rabbit IgG secondary antibodies</a> ; Related news: <a href="#">Cancer Pathology Markers (SQ clones)</a>
Research Area	Controls and Markers antibody; Epithelial Marker antibody; Circulating Tumor Cells BioMarker antibody
Calculated Mw	35 kDa
PTM	Hyperglycosylated in carcinoma tissue as compared with autologous normal epithelia. Glycosylation at Asn-198 is crucial for protein stability. [UniProt]

## Images



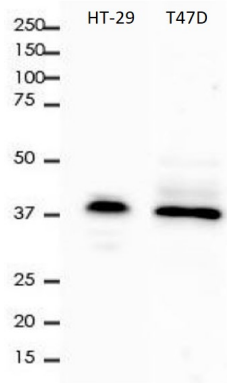
ARG66335 anti-EpCAM antibody [SQab1883] FACS image

Flow Cytometry: HCT-116 cells were fixed with 4% paraformaldehyde (10 min) and then permeabilized with 0.1% TritonX-100 for 15 min. The cells were stained with ARG66335 anti-EpCAM antibody [SQab1883] (red) at 1:800 dilution in 1x PBS/1% BSA for 30 min at RT, followed by Alexa Fluor® 488 labelled secondary antibody. Unlabelled sample (black) was used as a control.



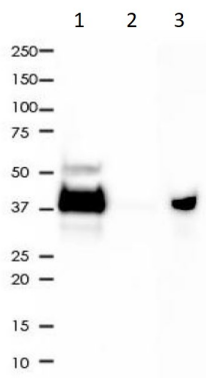
#### ARG66335 anti-EpCAM antibody [SQab1883] IHC-P image

Immunohistochemistry: Formalin-fixed and paraffin-embedded Human uterus tissue stained with ARG66335 anti-EpCAM antibody [SQab1883] at 1:3,200 dilution. Antigen Retrieval: Heat mediated was performed using Tris/EDTA buffer pH 9.0.



#### ARG66335 anti-EpCAM antibody [SQab1883] WB image

Western blot: 10 µg of HT-29 and T47D cell lysates stained with ARG66335 anti-EpCAM antibody [SQab1883] at 1:2000 dilution.



#### ARG66335 anti-EpCAM antibody [SQab1883] IP image

Immunoprecipitation: 0.4 mg of HT-29 whole cell lysate immunoprecipitated (1:50) and stained with ARG66335 anti-EpCAM antibody [SQab1883]. 1) ARG66335 IP in HT-29 whole cell lysate, 2) PBS instead of ARG66335 in HT-29 whole cell lysate, and 3) HT-29 whole cell lysate, 10 µg (input).