

ARG66336 anti-Cytokeratin 10 antibody [SQab1884]

Package: 100 µl, 50 µl
Store at: -20°C

Summary

Product Description	Recombinant Rabbit Monoclonal antibody [SQab1884] recognizes Cytokeratin 10
Tested Reactivity	Hu
Tested Application	FACS, IHC-P
Host	Rabbit
Clonality	Monoclonal
Clone	SQab1884
Isotype	IgG
Target Name	Cytokeratin 10
Species	Human
Immunogen	Synthetic peptide around the C-terminus of Human Cytokeratin 10.
Conjugation	Un-conjugated
Alternate Names	KPP; K10; CK-10; BIE; Keratin, type I cytoskeletal 10; Cytokeratin-10; CK10; BCIE; Keratin-10; EHK

Application Instructions

Application table	Application	Dilution
	FACS	1:50 - 1:200
	IHC-P	1:6400 - 1:12800

Application Note IHC-P: Antigen Retrieval: Heat mediated was performed using Tris/EDTA buffer pH 9.0.
* The dilutions indicate recommended starting dilutions and the optimal dilutions or concentrations should be determined by the scientist.

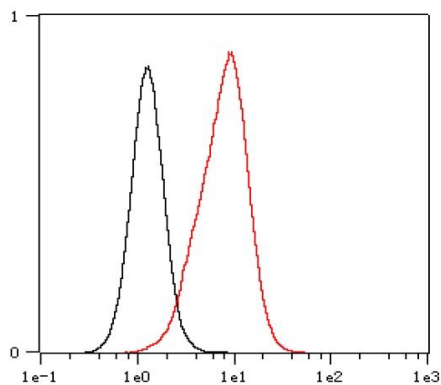
Properties

Form	Liquid
Purification	Purification with Protein A.
Buffer	PBS, 0.01% Sodium azide, 40% Glycerol and 0.05% BSA.
Preservative	0.01% Sodium azide
Stabilizer	40% Glycerol and 0.05% BSA
Storage instruction	For continuous use, store undiluted antibody at 2-8°C for up to a week. For long-term storage, aliquot and store at -20°C. Storage in frost free freezers is not recommended. Avoid repeated freeze/thaw cycles. Suggest spin the vial prior to opening. The antibody solution should be gently mixed before use.
Note	For laboratory research only, not for drug, diagnostic or other use.

Bioinformation

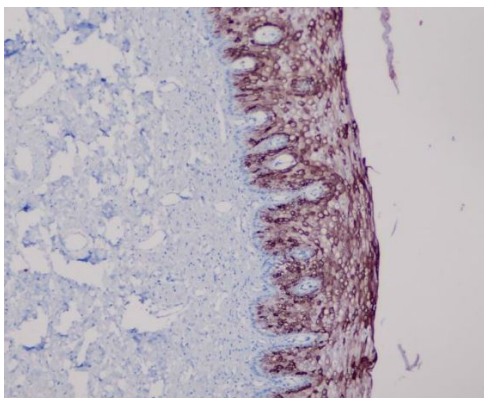
Gene Symbol	KRT10
Gene Full Name	keratin 10, type I
Background	Cytokeratin 10 is a member of the type I (acidic) cytokeratin family, which belongs to the superfamily of intermediate filament (IF) proteins. Keratins are heteropolymeric structural proteins which form the intermediate filament. These filaments, along with actin microfilaments and microtubules, compose the cytoskeleton of epithelial cells. Mutations in this gene are associated with epidermolytic hyperkeratosis. This gene is located within a cluster of keratin family members on chromosome 17q21. [provided by RefSeq, Jul 2008]
Function	<p>Cytokeratin 10 plays a role in the establishment of the epidermal barrier on plantar skin.</p> <p>(Microbial infection) Acts as a mediator of S.aureus adherence to desquamated nasal epithelial cells via clfB, and hence may play a role in nasal colonization.</p> <p>(Microbial infection) Binds S.pneumoniae PsrP, mediating adherence of the bacteria to lung cell lines. Reduction of levels of KRT10 keratin decrease adherence, overexpression increases adherence. Neither protein has to be glycosylated for the interaction to occur. [UniProt]</p>
Highlight	<p>Related products: Anti-Rabbit IgG secondary antibodies;</p> <p>Related news: Cancer Pathology Markers (SQ clones)</p>
Calculated Mw	59 kDa

Images



ARG66336 anti-Cytokeratin 10 antibody [SQab1884] FACS image

Flow Cytometry: HeLa cells were fixed with 4% paraformaldehyde for 10 mins. The cells were stained with ARG66336 anti-Cytokeratin 10 antibody [SQab1884] (red) at 1:200 dilution in 1x PBS/1% BSA for 30 min at RT, followed by Alexa Fluor® 488 labelled secondary antibody. Unlabelled sample (black) was used as a control.



ARG66336 anti-Cytokeratin 10 antibody [SQab1884] IHC-P image

Immunohistochemistry: Formalin-fixed and paraffin-embedded Human cervix tissue stained with ARG66336 anti-Cytokeratin 10 antibody [SQab1884] at 1:12,800 dilution. Antigen Retrieval: Heat mediated was performed using Tris/EDTA buffer pH 9.0.