

ARG66344 anti-CD1a antibody [SQab1894]

Package: 100 µl
Store at: -20°C

Summary

Product Description	Recombinant Rabbit Monoclonal antibody [SQab1894] recognizes CD1a
Tested Reactivity	Hu
Tested Application	IHC-P
Host	Rabbit
Clonality	Monoclonal
Clone	SQab1894
Isotype	IgG
Target Name	CD1a
Species	Human
Immunogen	Synthetic peptide within aa. 1-100 of Human CD1a.
Conjugation	Un-conjugated
Alternate Names	R4; FCB6; CD antigen CD1a; T6; T-cell surface antigen T6/Leu-6; hTa1 thymocyte antigen; T-cell surface glycoprotein CD1a; CD1; HTA1

Application Instructions

Application table	Application	Dilution
	IHC-P	1:100 - 1:200
Application Note	IHC-P: Antigen Retrieval: Heat mediated was performed using Tris/EDTA buffer (pH 9.0), primary antibody incubate at RT for 30 min. * The dilutions indicate recommended starting dilutions and the optimal dilutions or concentrations should be determined by the scientist.	

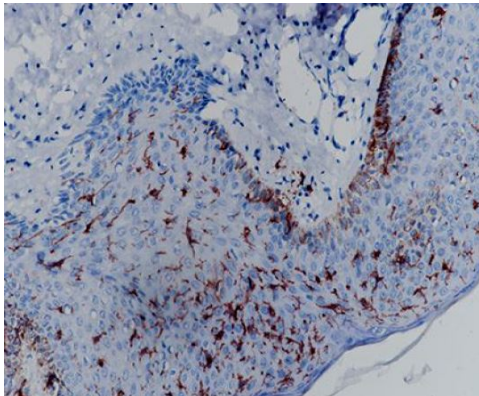
Properties

Form	Liquid
Purification	Purification with Protein A.
Buffer	PBS, 0.01% Sodium azide, 40% Glycerol and 0.05% BSA.
Preservative	0.01% Sodium azide
Stabilizer	40% Glycerol and 0.05% BSA
Storage instruction	For continuous use, store undiluted antibody at 2-8°C for up to a week. For long-term storage, aliquot and store at -20°C. Storage in frost free freezers is not recommended. Avoid repeated freeze/thaw cycles. Suggest spin the vial prior to opening. The antibody solution should be gently mixed before use.
Note	For laboratory research only, not for drug, diagnostic or other use.

Bioinformation

Gene Symbol	CD1A
Gene Full Name	CD1a molecule
Background	This gene encodes a member of the CD1 family of transmembrane glycoproteins, which are structurally related to the major histocompatibility complex (MHC) proteins and form heterodimers with beta-2-microglobulin. The CD1 proteins mediate the presentation of primarily lipid and glycolipid antigens of self or microbial origin to T cells. The human genome contains five CD1 family genes organized in a cluster on chromosome 1. The CD1 family members are thought to differ in their cellular localization and specificity for particular lipid ligands. The protein encoded by this gene localizes to the plasma membrane and to recycling vesicles of the early endocytic system. Alternatively spliced transcript variants have been observed, but their biological validity has not been determined. [provided by RefSeq, Jul 2008]
Function	Antigen-presenting protein that binds self and non-self lipid and glycolipid antigens and presents them to T-cell receptors on natural killer T-cells. [UniProt]
Highlight	Related products: CD1a antibodies ; Anti-Rabbit IgG secondary antibodies ; Related news: Cancer Pathology Markers (SQ clones) Detecting exosomal HMGB1 for ICD research
Calculated Mw	37 kDa

Images



ARG66344 anti-CD1a antibody [SQab1894] IHC-P image

Immunohistochemistry: Formalin-fixed and paraffin-embedded skin tissue stained with ARG66344 anti-CD1a antibody [SQab1894].
Antigen Retrieval: Heat mediated was performed using Tris/EDTA buffer (pH 9.0).