

## ARG66348 anti-CD23 antibody [SQab1898]

Package: 100 µl  
Store at: -20°C

### Summary

Product Description	Recombinant Rabbit Monoclonal antibody [SQab1898] recognizes CD23
Tested Reactivity	Hu
Tested Application	IHC-P
Host	Rabbit
Clonality	Monoclonal
Clone	SQab1898
Isotype	IgG
Target Name	CD23
Species	Human
Immunogen	Synthetic peptide within aa. 221-321 of Human CD23.
Conjugation	Un-conjugated
Alternate Names	CD23A; BLAST-2; Lymphocyte IgE receptor; CLEC4J; Immunoglobulin E-binding factor; CD23; IGEBF; Fc-epsilon-RII; CD antigen CD23; FCE2; Low affinity immunoglobulin epsilon Fc receptor; C-type lectin domain family 4 member J

### Application Instructions

Application table	Application	Dilution
	IHC-P	1:100 - 1:200
Application Note	IHC-P: Antigen Retrieval: Heat mediated was performed using Tris/EDTA buffer (pH 9.0), primary antibody incubate at RT for 30 min. * The dilutions indicate recommended starting dilutions and the optimal dilutions or concentrations should be determined by the scientist.	

### Properties

Form	Liquid
Purification	Purification with Protein A.
Buffer	PBS, 0.01% Sodium azide, 40% Glycerol and 0.05% BSA.
Preservative	0.01% Sodium azide
Stabilizer	40% Glycerol and 0.05% BSA
Storage instruction	For continuous use, store undiluted antibody at 2-8°C for up to a week. For long-term storage, aliquot and store at -20°C. Storage in frost free freezers is not recommended. Avoid repeated freeze/thaw cycles. Suggest spin the vial prior to opening. The antibody solution should be gently mixed before use.
Note	For laboratory research only, not for drug, diagnostic or other use.

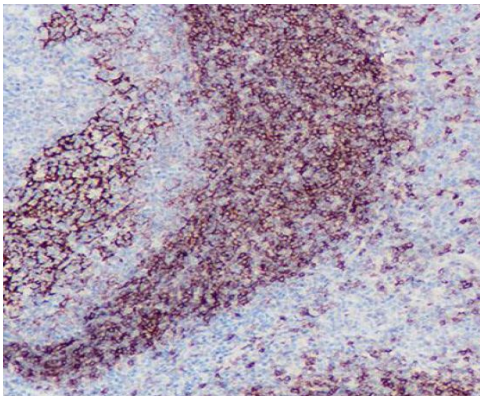
## Bioinformation

---

Gene Symbol	FCER2
Gene Full Name	Fc fragment of IgE, low affinity II, receptor for (CD23)
Background	The protein encoded by this gene is a B-cell specific antigen, and a low-affinity receptor for IgE. It has essential roles in B cell growth and differentiation, and the regulation of IgE production. This protein also exists as a soluble secreted form, then functioning as a potent mitogenic growth factor. Alternatively spliced transcript variants encoding different isoforms have been described for this gene.[provided by RefSeq, Jul 2011]
Function	Low-affinity receptor for immunoglobulin E (IgE) and CR2/CD21. Has essential roles in the regulation of IgE production and in the differentiation of B-cells (it is a B-cell-specific antigen). [UniProt]
Highlight	Related products: <a href="#">CD23 antibodies</a> ; <a href="#">CD23 ELISA Kits</a> ; <a href="#">Anti-Rabbit IgG secondary antibodies</a> ; Related news: <a href="#">Cancer Pathology Markers (SQ clones)</a>
Calculated Mw	36 kDa
PTM	N- and O-glycosylated.  The secreted form sCD23 is produced by ADAM10-mediated ectodomain shedding. [UniProt]

## Images

---



ARG66348 anti-CD23 antibody [SQab1898] IHC-P image

Immunohistochemistry: Formalin-fixed and paraffin-embedded tonsil tissue stained with ARG66348 anti-CD23 antibody [SQab1898]. Antigen Retrieval: Heat mediated was performed using Tris/EDTA buffer (pH 9.0).