

ARG66353 anti-EpCAM antibody [SQab18103]

Package: 100 µl
Store at: -20°C

Summary

| | |
|---------------------|---|
| Product Description | Recombinant Rabbit Monoclonal antibody [SQab18103] recognizes EpCAM |
| Tested Reactivity | Hu |
| Tested Application | IHC-P, WB |
| Host | Rabbit |
| Clonality | Monoclonal |
| Clone | SQab18103 |
| Isotype | IgG |
| Target Name | EpCAM |
| Species | Human |
| Immunogen | Synthetic peptide within aa. 1-100 of Human EpCAM. |
| Conjugation | Un-conjugated |
| Alternate Names | MIC18; EGP; Tumor-associated calcium signal transducer 1; Epithelial glycoprotein 314; KSA; Ep-CAM; Epithelial cell surface antigen; Adenocarcinoma-associated antigen; HNPCC8; Cell surface glycoprotein Trop-1; EGP40; TACSTD1; KS1/4; hEGP314; Major gastrointestinal tumor-associated protein GA733-2; M4S1; MK-1; Epithelial glycoprotein; KS 1/4 antigen; ESA; DIAR5; EGP314; Epithelial cell adhesion molecule; EGP-2; TROP1; CD antigen CD326 |

Application Instructions

| | | |
|-------------------|--|----------------|
| Application table | Application | Dilution |
| | IHC-P | 1:100 - 1:200 |
| | WB | 1:500 - 1:4000 |
| Application Note | IHC-P: Antigen Retrieval: Heat mediated was performed using Tris/EDTA buffer (pH 9.0), primary antibody incubate at RT for 30 min. * The dilutions indicate recommended starting dilutions and the optimal dilutions or concentrations should be determined by the scientist. | |
| Observed Size | 35 kDa | |

Properties

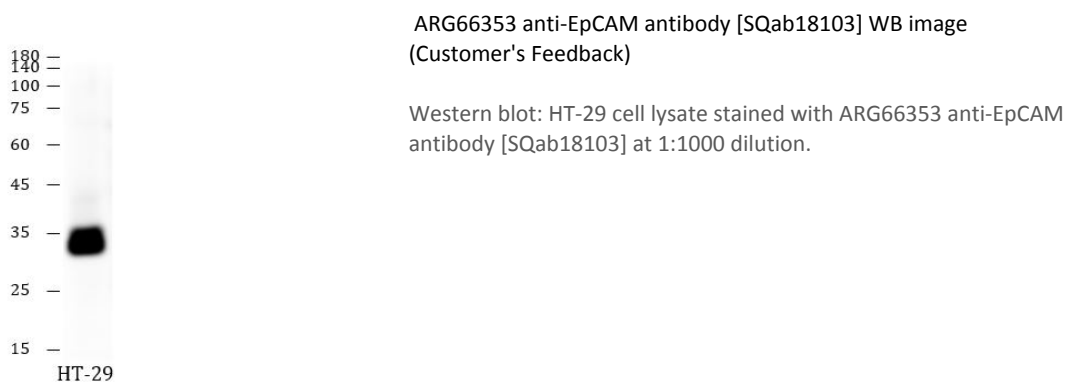
| | |
|--------------|--|
| Form | Liquid |
| Purification | Purification with Protein A. |
| Buffer | PBS, 0.01% Sodium azide, 40% Glycerol and 0.05% BSA. |
| Preservative | 0.01% Sodium azide |
| Stabilizer | 40% Glycerol and 0.05% BSA |

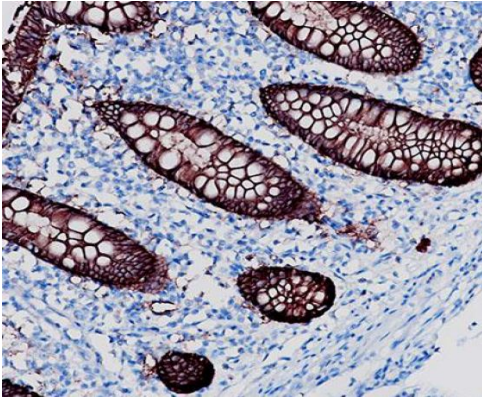
| | |
|---------------------|---|
| Storage instruction | For continuous use, store undiluted antibody at 2-8°C for up to a week. For long-term storage, aliquot and store at -20°C. Storage in frost free freezers is not recommended. Avoid repeated freeze/thaw cycles. Suggest spin the vial prior to opening. The antibody solution should be gently mixed before use. |
| Note | For laboratory research only, not for drug, diagnostic or other use. |

Bioinformation

| | |
|----------------|--|
| Gene Symbol | EPCAM |
| Gene Full Name | epithelial cell adhesion molecule |
| Background | EpCAM is a carcinoma-associated antigen and is a member of a family that includes at least two type I membrane proteins. This antigen is expressed on most normal epithelial cells and gastrointestinal carcinomas and functions as a homotypic calcium-independent cell adhesion molecule. The antigen is being used as a target for immunotherapy treatment of human carcinomas. Mutations in this gene result in congenital tufting enteropathy. [provided by RefSeq, Dec 2008] |
| Function | EpCAM may act as a physical homophilic interaction molecule between intestinal epithelial cells (IECs) and intraepithelial lymphocytes (IELs) at the mucosal epithelium for providing immunological barrier as a first line of defense against mucosal infection. Plays a role in embryonic stem cells proliferation and differentiation. Up-regulates the expression of FABP5, MYC and cyclins A and E. [UniProt] |
| Highlight | Related products: EpCAM antibodies ; EpCAM ELISA Kits ; EpCAM Duos / Panels ; Anti-Rabbit IgG secondary antibodies ; Related news: Cancer Pathology Markers (SQ clones) |
| Research Area | Controls and Markers antibody; Epithelial Marker antibody; Circulating Tumor Cells BioMarker antibody |
| Calculated Mw | 35 kDa |
| PTM | Hyperglycosylated in carcinoma tissue as compared with autologous normal epithelia. Glycosylation at Asn-198 is crucial for protein stability. [UniProt] |

Images





ARG66353 anti-EpCAM antibody [SQab18103] IHC-P image

Immunohistochemistry: Formalin-fixed and paraffin-embedded colon tissue stained with ARG66353 anti-EpCAM antibody [SQab18103]. Antigen Retrieval: Heat mediated was performed using Tris/EDTA buffer (pH 9.0).