

ARG66357 anti-ERBB2 / HER2 antibody [SQab1890]

Package: 100 µl
Store at: -20°C

Summary

Product Description	Recombinant Rabbit Monoclonal antibody [SQab1890] recognizes ERBB2 / HER2
Tested Reactivity	Hu
Tested Application	IHC-P
Host	Rabbit
Clonality	Monoclonal
Clone	SQab1890
Isotype	IgG
Target Name	ERBB2 / HER2
Species	Human
Immunogen	Synthetic peptide around the C-terminus of Human HER2 / ErbB2.
Conjugation	Un-conjugated
Alternate Names	p185erbB2; Proto-oncogene c-ErbB-2; Metastatic lymph node gene 19 protein; Proto-oncogene Neu; NGL; EC 2.7.10.1; CD340; CD antigen CD340; TKR1; HER-2; Tyrosine kinase-type cell surface receptor HER2; HER2; NEU; HER-2/neu; MLN 19; Receptor tyrosine-protein kinase erbB-2

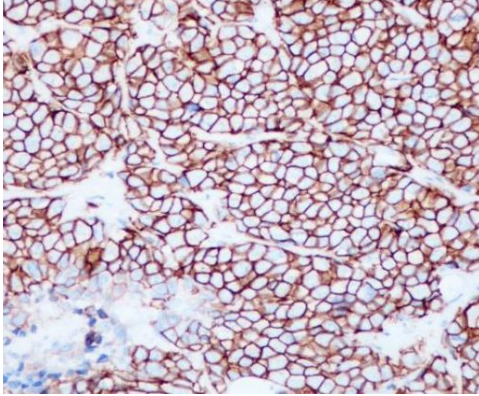
Application Instructions

Application table	Application	Dilution
	IHC-P	1:100 - 1:200
Application Note	IHC-P: Antigen Retrieval: Heat mediated was performed using Tris/EDTA buffer (pH 9.0) * The dilutions indicate recommended starting dilutions and the optimal dilutions or concentrations should be determined by the scientist.	

Properties

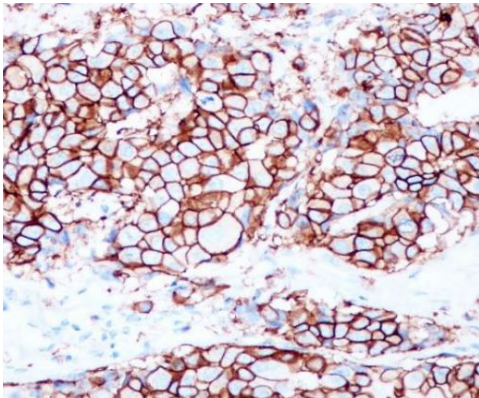
Form	Liquid
Purification	Purification with Protein A.
Buffer	PBS, 0.01% Sodium azide, 40% Glycerol and 0.05% BSA.
Preservative	0.01% Sodium azide
Stabilizer	40% Glycerol and 0.05% BSA
Storage instruction	For continuous use, store undiluted antibody at 2-8°C for up to a week. For long-term storage, aliquot and store at -20°C. Storage in frost free freezers is not recommended. Avoid repeated freeze/thaw cycles. Suggest spin the vial prior to opening. The antibody solution should be gently mixed before use.
Note	For laboratory research only, not for drug, diagnostic or other use.

Gene Symbol	ERBB2
Gene Full Name	erb-b2 receptor tyrosine kinase 2
Background	<p>This gene encodes a member of the epidermal growth factor (EGF) receptor family of receptor tyrosine kinases. This protein has no ligand binding domain of its own and therefore cannot bind growth factors. However, it does bind tightly to other ligand-bound EGF receptor family members to form a heterodimer, stabilizing ligand binding and enhancing kinase-mediated activation of downstream signalling pathways, such as those involving mitogen-activated protein kinase and phosphatidylinositol-3 kinase. Allelic variations at amino acid positions 654 and 655 of isoform a (positions 624 and 625 of isoform b) have been reported, with the most common allele, Ile654/Ile655, shown here. Amplification and/or overexpression of this gene has been reported in numerous cancers, including breast and ovarian tumors. Alternative splicing results in several additional transcript variants, some encoding different isoforms and others that have not been fully characterized. [provided by RefSeq, Jul 2008]</p>
Function	<p>Protein tyrosine kinase that is part of several cell surface receptor complexes, but that apparently needs a coreceptor for ligand binding. Essential component of a neuregulin-receptor complex, although neuregulins do not interact with it alone. GP30 is a potential ligand for this receptor. Regulates outgrowth and stabilization of peripheral microtubules (MTs). Upon ERBB2 activation, the MEMO1-RHOA-DIAPH1 signaling pathway elicits the phosphorylation and thus the inhibition of GSK3B at cell membrane. This prevents the phosphorylation of APC and CLASP2, allowing its association with the cell membrane. In turn, membrane-bound APC allows the localization of MACF1 to the cell membrane, which is required for microtubule capture and stabilization.</p> <p>In the nucleus is involved in transcriptional regulation. Associates with the 5'-TCAAATTC-3' sequence in the PTGS2/COX-2 promoter and activates its transcription. Implicated in transcriptional activation of CDKN1A; the function involves STAT3 and SRC. Involved in the transcription of rRNA genes by RNA Pol I and enhances protein synthesis and cell growth. [UniProt]</p>
Highlight	<p>Related products: HER2 antibodies; HER2 ELISA Kits; HER2 Duos / Panels; Anti-Rabbit IgG secondary antibodies; Related news: Cancer Pathology Markers (SQ clones)</p>
Research Area	Cancer antibody; Controls and Markers antibody; Signaling Transduction antibody; Circulating Tumor Cells BioMarker antibody
Calculated Mw	138 kDa
PTM	<p>Autophosphorylated. Autophosphorylation occurs in trans, i.e. one subunit of the dimeric receptor phosphorylates tyrosine residues on the other subunit (Probable). Ligand-binding increases phosphorylation on tyrosine residues (PubMed:27134172). Signaling via SEMA4C promotes phosphorylation at Tyr-1248 (PubMed:17554007). Dephosphorylated by PTPN12 (PubMed:27134172). [UniProt]</p>



ARG66357 anti-ERBB2 / HER2 antibody [SQab1890] IHC-P image

Immunohistochemistry: Formalin-fixed and paraffin-embedded Human breast cancer tissue stained with ARG66357 anti-ERBB2 / HER2 antibody [SQab1890] at 1:500 dilution. Antigen Retrieval: Heat mediated was performed using Tris/EDTA buffer (pH 9.0).



ARG66357 anti-ERBB2 / HER2 antibody [SQab1890] IHC-P image

Immunohistochemistry: Formalin-fixed and paraffin-embedded Human breast cancer tissue stained with ARG66357 anti-ERBB2 / HER2 antibody [SQab1890] at 1:500 dilution. Antigen Retrieval: Heat mediated was performed using Tris/EDTA buffer (pH 9.0).
