

## ARG66360 anti-KHK (isoform A) antibody

Package: 100 µl  
Store at: -20°C

### Summary

Product Description	Rabbit Polyclonal antibody recognizes KHK (isoform A)
Tested Reactivity	Hu
Tested Application	IHC-P, WB
Specificity	The antibody detects endogenous level of total KHK Isoform A protein.
Host	Rabbit
Clonality	Polyclonal
Isotype	IgG
Target Name	KHK (isoform A)
Species	Human
Immunogen	Synthetic peptide around aa. 90-95 (TTGSV) of Human KHK (isoform A).
Conjugation	Un-conjugated
Alternate Names	Hepatic fructokinase; Ketohexokinase; EC 2.7.1.3

### Application Instructions

Application table	Application	Dilution
	IHC-P	1:50 - 1:100
	WB	1:500 - 1:1000
Application Note	* The dilutions indicate recommended starting dilutions and the optimal dilutions or concentrations should be determined by the scientist.	

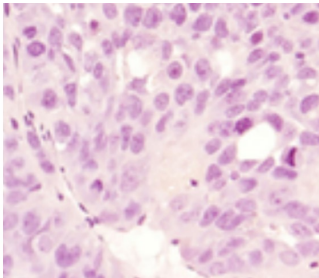
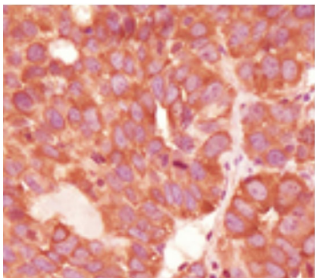
### Properties

Form	Liquid
Purification	Affinity purification with immunogen.
Buffer	PBS (pH 7.4), 150mM NaCl, 0.02% Sodium azide and 50% Glycerol.
Preservative	0.02% Sodium azide
Stabilizer	50% Glycerol
Concentration	1 mg/ml
Storage instruction	For continuous use, store undiluted antibody at 2-8°C for up to a week. For long-term storage, aliquot and store at -20°C. Storage in frost free freezers is not recommended. Avoid repeated freeze/thaw cycles. Suggest spin the vial prior to opening. The antibody solution should be gently mixed before use.
Note	For laboratory research only, not for drug, diagnostic or other use.

Bioinformation

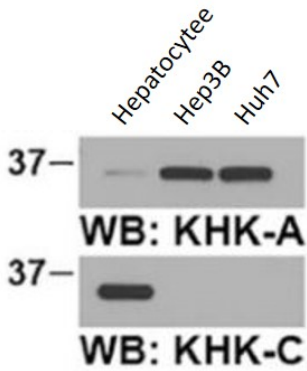
Gene Symbol	KHK
Gene Full Name	ketohehexokinase (fructokinase)
Background	This gene encodes ketohehexokinase that catalyzes conversion of fructose to fructose-1-phosphate. The product of this gene is the first enzyme with a specialized pathway that catabolizes dietary fructose. Alternatively spliced transcript variants encoding different isoforms have been identified. [provided by RefSeq, Jul 2008]
Function	Catalyzes the phosphorylation of the ketose sugar fructose to fructose-1-phosphate. [UniProt]
Calculated Mw	33 kDa

Images



ARG66360 anti-KHK (isoform A) antibody IHC-P image

Immunohistochemistry: Paraffin-embedded tumors derived from Huh-7 cells stained with ARG66360 anti-KHK (isoform A) antibody (left), or the same antibody pre-incubated with KHK-A aa. 72-115 peptide (right).



ARG66360 anti-KHK (isoform A) antibody WB image

Western blot: Hepatocyte, Hep3B and Huh7 cell lysates stained with ARG66360 anti-KHK (isoform A) antibody (upper panel) and ARG66361 anti-KHK (isoform C) antibody (lower panel).