

ARG66404 anti-RAB6A antibody

Package: 100 µl
Store at: -20°C

Summary

Product Description	Rabbit Polyclonal antibody recognizes RAB6A
Tested Reactivity	Hu, Ms
Tested Application	IHC-P, WB
Host	Rabbit
Clonality	Polyclonal
Isotype	IgG
Target Name	RAB6A
Species	Human
Immunogen	Synthetic peptide of Human RAB6A.
Conjugation	Un-conjugated
Alternate Names	Ras-related protein Rab-6A; Rab-6; RAB6

Application Instructions

Application table	Application	Dilution
	IHC-P	1:25 - 1:100
	WB	1:500 - 1:2000
Application Note	* The dilutions indicate recommended starting dilutions and the optimal dilutions or concentrations should be determined by the scientist.	
Positive Control	WB: 293T, Mouse brain and A549. IHC-P: Human skin.	
Observed Size	~ 24 kDa	

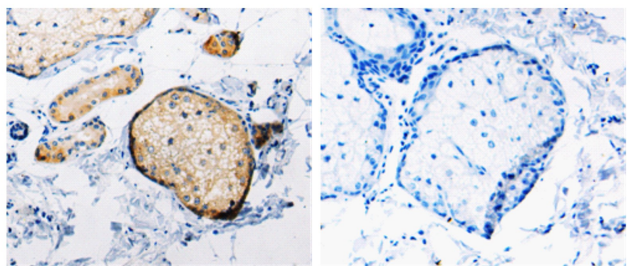
Properties

Form	Liquid
Purification	Affinity purification with immunogen.
Buffer	PBS (pH 7.4), 0.05% Sodium azide and 40% Glycerol.
Preservative	0.05% Sodium azide
Stabilizer	40% Glycerol
Concentration	1.3 mg/ml
Storage instruction	For continuous use, store undiluted antibody at 2-8°C for up to a week. For long-term storage, aliquot and store at -20°C. Storage in frost free freezers is not recommended. Avoid repeated freeze/thaw cycles. Suggest spin the vial prior to opening. The antibody solution should be gently mixed before use.

Bioinformation

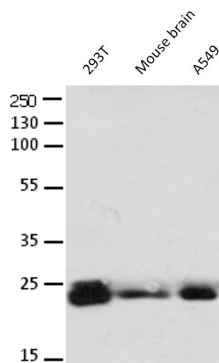
Gene Symbol	RAB6A
Gene Full Name	RAB6A, member RAS oncogene family
Background	This gene encodes a member of the RAB family, which belongs to the small GTPase superfamily. GTPases of the RAB family bind to various effectors to regulate the targeting and fusion of transport carriers to acceptor compartments. This protein is located at the Golgi apparatus, which regulates trafficking in both a retrograde (from early endosomes and Golgi to the endoplasmic reticulum) and an anterograde (from the Golgi to the plasma membrane) directions. Myosin II is an effector of this protein in these processes. This protein is also involved in assembly of human cytomegalovirus (HCMV) by interacting with the cellular protein Bicaudal D1, which interacts with the HCMV virion tegument protein, pp150. Multiple alternatively spliced transcript variants encoding different isoforms have been identified. [provided by RefSeq, Aug 2011]
Function	Protein transport. Regulator of membrane traffic from the Golgi apparatus towards the endoplasmic reticulum (ER). Has a low GTPase activity. [UniProt]
Calculated Mw	24 kDa
PTM	Prenylated. [UniProt]
Cellular Localization	Golgi apparatus membrane; Lipid-anchor. Note=BICD2 facilitates its targeting to Golgi apparatus membrane. Isoform 1: Golgi apparatus membrane; Lipid-anchor. Isoform 2: Golgi apparatus membrane; Lipid-anchor. [UniProt]

Images



ARG66404 anti-RAB6A antibody IHC-P image

Immunohistochemistry: Paraffin-embedded Human skin stained with ARG66404 anti-RAB6A antibody (left) at 1:25 dilution, or the same antibody pre-incubated with antigen (right). (Original magnification: X200).



ARG66404 anti-RAB6A antibody WB image

Western blot: 30 µg of 293T, Mouse brain and A549 lysates stained with ARG66404 anti-RAB6A antibody at 1:650 dilution.