

## ARG66408 anti-TMPO / Lap2 antibody

Package: 100 µg  
Store at: -20°C

### Summary

Product Description	Rabbit Polyclonal antibody recognizes TMPO / Lap2
Tested Reactivity	Hu, Ms
Tested Application	IHC-P, WB
Host	Rabbit
Clonality	Polyclonal
Isotype	IgG
Target Name	TMPO / Lap2
Species	Human
Immunogen	Synthetic peptide corresponding to aa. 1-50 of Human TMPO / Lap2.
Conjugation	Un-conjugated
Alternate Names	Splenin; Lamina-associated polypeptide 2, isoform alpha; Thymopoietin isoform alpha; PRO0868; CMD1T; LAP2; TP; TP5; TP alpha; Thymopoietin-related peptide isoform alpha; LEMD4; TPRP isoform alpha

### Application Instructions

Application table	Application	Dilution
	IHC-P	1:100 - 1:300
	WB	1:500 - 1:2000
Application Note	* The dilutions indicate recommended starting dilutions and the optimal dilutions or concentrations should be determined by the scientist.	
Observed Size	~ 50 kDa, 80 kDa	

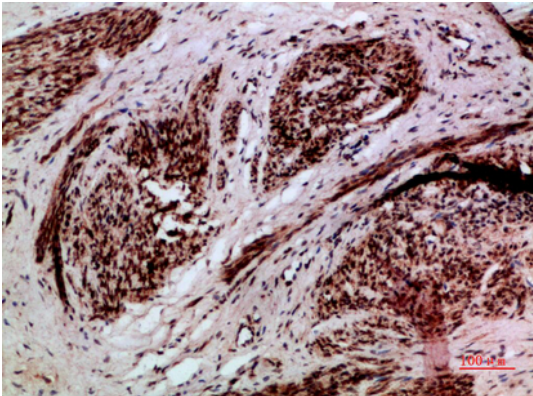
### Properties

Form	Liquid
Purification	Affinity purification with immunogen.
Buffer	PBS (pH 7.4), 0.02% Sodium azide and 50% Glycerol.
Preservative	0.02% Sodium azide
Stabilizer	50% Glycerol
Concentration	1 mg/ml
Storage instruction	For continuous use, store undiluted antibody at 2-8°C for up to a week. For long-term storage, aliquot and store at -20°C. Storage in frost free freezers is not recommended. Avoid repeated freeze/thaw cycles. Suggest spin the vial prior to opening. The antibody solution should be gently mixed before use.

Bioinformation

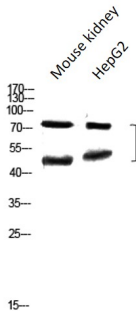
Gene Symbol	TMPO
Gene Full Name	thymopoietin
Background	The protein encoded by this gene resides in the nucleus and may play a role in the assembly of the nuclear lamina, and thus help maintain the structural organization of the nuclear envelope. It may function as a receptor for the attachment of lamin filaments to the inner nuclear membrane. Mutations in this gene are associated with dilated cardiomyopathy. Alternatively spliced transcript variants encoding different isoforms have been noted for this gene. [provided by RefSeq, May 2010]
Function	May be involved in the structural organization of the nucleus and in the post-mitotic nuclear assembly. Plays an important role, together with LMNA, in the nuclear anchorage of RB1.  TP and TP5 may play a role in T-cell development and function. TP5 is an immunomodulating pentapeptide. [UniProt]
Calculated Mw	75 kDa
PTM	Mitosis-specific phosphorylation specifically abolishes its binding to lamin B and chromosomes.  Citrullinated by PADI4. [UniProt]
Cellular Localization	Nucleus. Chromosome. Note=Expressed diffusely throughout the nucleus. [UniProt]

Images



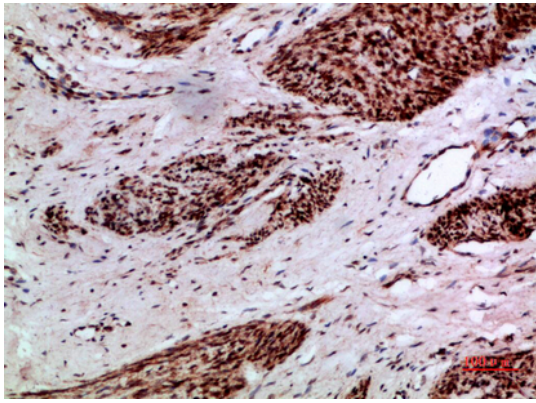
ARG66408 anti-TMPO / Lap2 antibody IHC-P image

Immunohistochemistry: Paraffin-embedded Human cervical cancer stained with ARG66408 anti-TMPO / Lap2 antibody at 1:200 dilution.



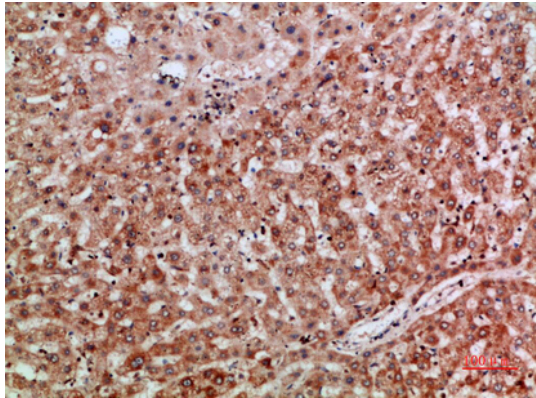
ARG66408 anti-TMPO / Lap2 antibody WB image

Western blot: Mouse kidney and HepG2 lysates stained with ARG66408 anti-TMPO / Lap2 antibody at 1:800 dilution.



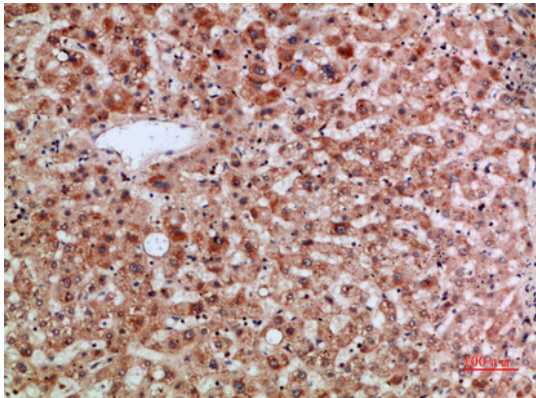
ARG66408 anti-TMPO / Lap2 antibody IHC-P image

Immunohistochemistry: Paraffin-embedded Human cervical cancer stained with ARG66408 anti-TMPO / Lap2 antibody at 1:200 dilution.



ARG66408 anti-TMPO / Lap2 antibody IHC-P image

Immunohistochemistry: Paraffin-embedded Human liver stained with ARG66408 anti-TMPO / Lap2 antibody at 1:200 dilution.



ARG66408 anti-TMPO / Lap2 antibody IHC-P image

Immunohistochemistry: Paraffin-embedded Human liver stained with ARG66408 anti-TMPO / Lap2 antibody at 1:200 dilution.