

ARG66410 anti-SLC16A3 / MCT4 antibody

Package: 100 µg
Store at: -20°C

Summary

Product Description	Rabbit Polyclonal antibody recognizes SLC16A3 / MCT4
Tested Reactivity	Hu
Tested Application	WB
Host	Rabbit
Clonality	Polyclonal
Isotype	IgG
Target Name	SLC16A3 / MCT4
Species	Human
Immunogen	Synthetic peptide corresponding to aa. 210-290 of Human SLC16A3 / MCT4.
Conjugation	Un-conjugated
Alternate Names	MCT 4; MCT 3; Solute carrier family 16 member 3; Monocarboxylate transporter 4; MCT4; MCT-3; MCT-4; MCT3

Application Instructions

Application table	Application	Dilution
	WB	1:500 - 1:2000
Application Note	* The dilutions indicate recommended starting dilutions and the optimal dilutions or concentrations should be determined by the scientist.	
Observed Size	~ 47 kDa	

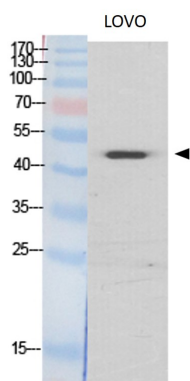
Properties

Form	Liquid
Purification	Affinity purification with immunogen.
Buffer	PBS, 0.02% Sodium azide, 50% Glycerol and 0.5% BSA.
Preservative	0.02% Sodium azide
Stabilizer	50% Glycerol and 0.5% BSA
Concentration	1 mg/ml
Storage instruction	For continuous use, store undiluted antibody at 2-8°C for up to a week. For long-term storage, aliquot and store at -20°C. Storage in frost free freezers is not recommended. Avoid repeated freeze/thaw cycles. Suggest spin the vial prior to opening. The antibody solution should be gently mixed before use.
Note	For laboratory research only, not for drug, diagnostic or other use.

Bioinformation

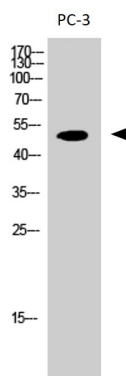
Gene Symbol	SLC16A3
Gene Full Name	solute carrier family 16 (monocarboxylate transporter), member 3
Background	Lactic acid and pyruvate transport across plasma membranes is catalyzed by members of the proton-linked monocarboxylate transporter (MCT) family, which has been designated solute carrier family-16. Each MCT appears to have slightly different substrate and inhibitor specificities and transport kinetics, which are related to the metabolic requirements of the tissues in which it is found. The MCTs, which include MCT1 (SLC16A1; MIM 600682) and MCT2 (SLC16A7; MIM 603654), are characterized by 12 predicted transmembrane domains (Price et al., 1998 [PubMed 9425115]).[supplied by OMIM, Mar 2008]
Function	Proton-linked monocarboxylate transporter. Catalyzes the rapid transport across the plasma membrane of many monocarboxylates such as lactate, pyruvate, branched-chain oxo acids derived from leucine, valine and isoleucine, and the ketone bodies acetoacetate, beta-hydroxybutyrate and acetate (By similarity). [UniProt]
Calculated Mw	49 kDa
Cellular Localization	Cell membrane; Multi-pass membrane protein. [UniProt]

Images



ARG66410 anti-SLC16A3 / MCT4 antibody WB image

Western blot: LOVO cell lysate stained with ARG66410 anti-SLC16A3 / MCT4 antibody at 1:500 dilution.



ARG66410 anti-SLC16A3 / MCT4 antibody WB image

Western blot: PC-3 cell lysate stained with ARG66410 anti-SLC16A3 / MCT4 antibody at 1:500 dilution.