

ARG66460 anti-LUC7L2 antibody

Package: 100 µl
Store at: -20°C

Summary

Product Description	Rabbit Polyclonal antibody recognizes LUC7L2
Tested Reactivity	Hu
Predict Reactivity	Ms
Tested Application	IHC-P, WB
Host	Rabbit
Clonality	Polyclonal
Isotype	IgG
Target Name	LUC7L2
Species	Human
Immunogen	KLH-conjugated synthetic peptide within the center region of Human LUC7L2.
Conjugation	Un-conjugated
Alternate Names	LUC7B2; CGI-74; CGI-59; Putative RNA-binding protein Luc7-like 2

Application Instructions

Application table	Application	Dilution
	IHC-P	1:100 - 1:200
	WB	1:500 - 1:1000
Application Note	IHC-P: Antigen Retrieval: Heat mediation was performed in Sodium citrate buffer (pH 6.0). * The dilutions indicate recommended starting dilutions and the optimal dilutions or concentrations should be determined by the scientist.	

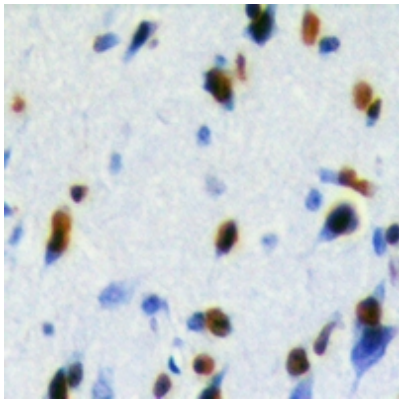
Properties

Form	Liquid
Purification	Affinity purified.
Buffer	PBS (pH 7.3), 0.02% Sodium azide and 0.2% BSA.
Preservative	0.02% Sodium azide
Stabilizer	0.2% BSA
Storage instruction	For continuous use, store undiluted antibody at 2-8°C for up to a week. For long-term storage, aliquot and store at -20°C or below. Storage in frost free freezers is not recommended. Avoid repeated freeze/thaw cycles. Suggest spin the vial prior to opening. The antibody solution should be gently mixed before use.
Note	For laboratory research only, not for drug, diagnostic or other use.

Bioinformation

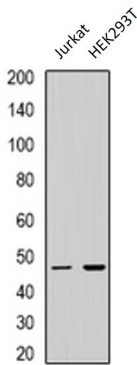
Gene Symbol	LUC7L2
Gene Full Name	LUC7-like 2 pre-mRNA splicing factor
Background	This gene encodes a protein that contains a C2H2-type zinc finger, coiled-coil region and arginine, serine-rich (RS) domain. A similar protein in mouse interacts with sodium channel modifier 1, and the encoded protein may be involved in the recognition of non-consensus splice donor sites in association with the U1 snRNP spliceosomal subunit. Alternatively spliced transcript variants encoding multiple isoforms have been observed for this gene. [provided by RefSeq, Sep 2011]
Function	May bind to RNA via its Arg/Ser-rich domain. [UniProt]
Calculated Mw	47 kDa
Cellular Localization	Nucleus speckle. Nucleus, nucleoplasm. Note=Colocalizes with SCNM1 and SNRNP70 in nuclear speckles. [UniProt]

Images



ARG66460 anti-LUC7L2 antibody IHC-P image

Immunohistochemistry: Formalin-fixed and paraffin-embedded Human brain. Antigen Retrieval: Heat mediation was performed in Sodium citrate buffer (pH 6.0). The section was then incubated with ARG66460 anti-LUC7L2 antibody at room temperature and detected using an HRP conjugated compact polymer system. DAB was used as the chromogen. The section was then counterstained with haematoxylin and mounted with DPX.



ARG66460 anti-LUC7L2 antibody WB image

Western blot: Jurkat and HEK293T whole cell lysates stained with ARG66460 anti-LUC7L2 antibody.