

ARG66465 anti-KLK10 / Kallikrein 10 antibody

Package: 100 µl
Store at: -20°C

Summary

Product Description	Rabbit Polyclonal antibody recognizes KLK10 / Kallikrein 10
Tested Reactivity	Hu, Ms, Rat
Tested Application	ICC/IF, IHC-P, WB
Host	Rabbit
Clonality	Polyclonal
Isotype	IgG
Target Name	KLK10 / Kallikrein 10
Species	Human
Immunogen	Recombinant full length protein of Human KLK10.
Conjugation	Un-conjugated
Alternate Names	Normal epithelial cell-specific 1; Protease serine-like 1; Kallikrein-10; PRSSL1; EC 3.4.21.-; NES1

Application Instructions

Application table	Application	Dilution
	ICC/IF	1:50 - 1:100
	IHC-P	1:50 - 1:200
	WB	1:500 - 1:2000
Application Note	IHC-P: Antigen Retrieval: Heat mediation was performed in Sodium citrate buffer (pH 6.0). * The dilutions indicate recommended starting dilutions and the optimal dilutions or concentrations should be determined by the scientist.	

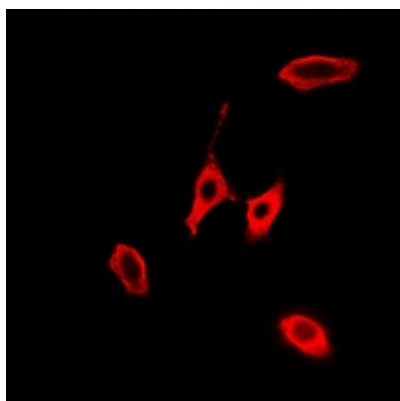
Properties

Form	Liquid
Purification	Affinity purification with immunogen.
Buffer	0.42% Potassium phosphate (pH 7.3), 0.87% NaCl, 0.01% Sodium azide and 30% Glycerol.
Preservative	0.01% Sodium azide
Stabilizer	30% Glycerol
Storage instruction	For continuous use, store undiluted antibody at 2-8°C for up to a week. For long-term storage, aliquot and store at -20°C. Storage in frost free freezers is not recommended. Avoid repeated freeze/thaw cycles. Suggest spin the vial prior to opening. The antibody solution should be gently mixed before use.
Note	For laboratory research only, not for drug, diagnostic or other use.

Bioinformation

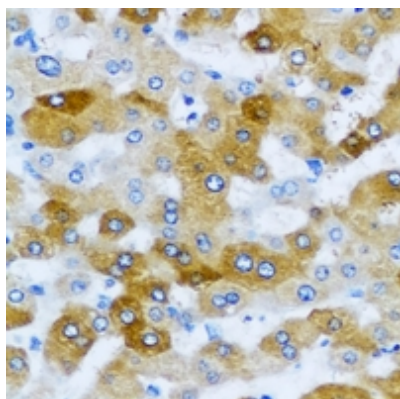
Gene Symbol	KLK10
Gene Full Name	kallikrein-related peptidase 10
Background	Kallikreins are a subgroup of serine proteases having diverse physiological functions. Growing evidence suggests that many kallikreins are implicated in carcinogenesis and some have potential as novel cancer and other disease biomarkers. This gene is one of the fifteen kallikrein subfamily members located in a cluster on chromosome 19. Its encoded protein is secreted and may play a role in suppression of tumorigenesis in breast and prostate cancers. Alternate splicing of this gene results in multiple transcript variants encoding the same protein. [provided by RefSeq, Jul 2008]
Function	Has a tumor-suppressor role for NES1 in breast and prostate cancer. [UniProt]
Calculated Mw	30 kDa
Cellular Localization	Secreted. [UniProt]

Images



ARG66465 anti-KLK10 / Kallikrein 10 antibody ICC/IF image

Immunofluorescence: Formalin-fixed A549 cells were permeabilized with 0.1% Triton X-100 in TBS for 5-10 minutes and blocked with 3% BSA-PBS for 30 minutes at room temperature. Cells were stained with ARG66465 anti-KLK10 / Kallikrein 10 antibody (red) in 3% BSA-PBS and incubated overnight at 4°C in a humidified chamber.



ARG66465 anti-KLK10 / Kallikrein 10 antibody IHC-P image

Immunohistochemistry: Formalin-fixed and paraffin-embedded Human liver cancer. Antigen Retrieval: Heat mediation was performed in Sodium citrate buffer (pH 6.0). The section was then incubated with ARG66465 anti-KLK10 / Kallikrein 10 antibody at room temperature and detected using an HRP conjugated compact polymer system. DAB was used as the chromogen. The section was then counterstained with haematoxylin and mounted with DPX.

ARG66465 anti-KLK10 / Kallikrein 10 antibody WB image

Western blot: Mouse brain, Mouse heart and Rat liver lysates stained with ARG66465 anti-KLK10 / Kallikrein 10 antibody.

