

ARG66471
anti-SEN1 antibody

Package: 100 µg

Store at: -20°C

Summary

Product Description	Rabbit Polyclonal antibody recognizes SEN1
Tested Reactivity	Hu, Ms
Tested Application	IHC-P, WB
Host	Rabbit
Clonality	Polyclonal
Isotype	IgG
Target Name	SEN1
Species	Human
Immunogen	Synthetic peptide corresponding to aa. 1-80 of Human SEN1.
Conjugation	Un-conjugated
Alternate Names	SuPr-2; EC 3.4.22.68; Sentrin/SUMO-specific protease SEN1; Sentrin-specific protease 1

Application Instructions

Application table	Application	Dilution
	IHC-P	1:100 - 1:300
	WB	1:500 - 1:2000
Application Note	* The dilutions indicate recommended starting dilutions and the optimal dilutions or concentrations should be determined by the scientist.	

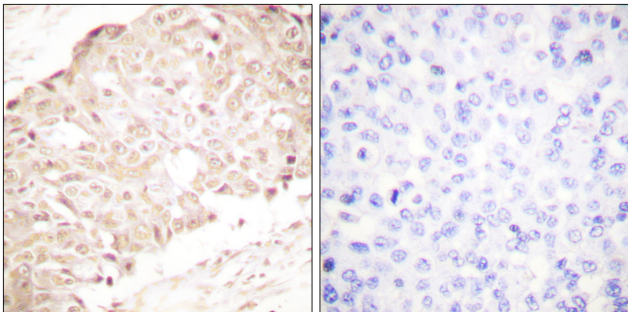
Properties

Form	Liquid
Purification	Affinity purification with immunogen.
Buffer	PBS, 0.02% Sodium azide, 50% Glycerol and 0.5% BSA.
Preservative	0.02% Sodium azide
Stabilizer	50% Glycerol and 0.5% BSA
Concentration	1 mg/ml
Storage instruction	For continuous use, store undiluted antibody at 2-8°C for up to a week. For long-term storage, aliquot and store at -20°C. Storage in frost free freezers is not recommended. Avoid repeated freeze/thaw cycles. Suggest spin the vial prior to opening. The antibody solution should be gently mixed before use.
Note	For laboratory research only, not for drug, diagnostic or other use.

Bioinformation

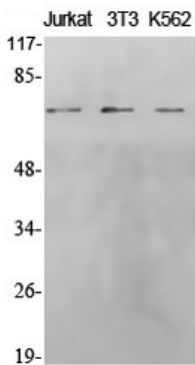
Gene Symbol	SENP1
Gene Full Name	SUMO1/sentrin specific peptidase 1
Background	This gene encodes a cysteine protease that specifically targets members of the small ubiquitin-like modifier (SUMO) protein family. This protease regulates SUMO pathways by deconjugating sumoylated proteins. This protease also functions to process the precursor SUMO proteins into their mature form. Alternate splicing results in multiple transcript variants. [provided by RefSeq, Jun 2012]
Function	Protease that catalyzes two essential functions in the SUMO pathway: processing of full-length SUMO1, SUMO2 and SUMO3 to their mature forms and deconjugation of SUMO1, SUMO2 and SUMO3 from targeted proteins. Deconjugates SUMO1 from HIPK2. Deconjugates SUMO1 from HDAC1 and BHLHE40/DEC1, which decreases its transcriptional repression activity. Deconjugates SUMO1 from CLOCK, which decreases its transcriptional activation activity. Deconjugates SUMO2 from MTA1. Desumoylates CCAR2 which decreases its interaction with SIRT1. [UniProt]
Calculated Mw	73 kDa
Cellular Localization	Nucleus. Cytoplasm. Note=Shuttles between cytoplasm and nucleus. [UniProt]

Images



ARG66471 anti-SENP1 antibody IHC-P image

Immunohistochemistry: Paraffin-embedded Human breast carcinoma stained with ARG66471 anti-SENP1 antibody. The picture on the right is blocked with the synthetic peptide.



ARG66471 anti-SENP1 antibody WB image

Western blot: Jurkat, 3T3 and K562 cell lysates stained with ARG66471 anti-SENP1 antibody.