

## ARG66492 anti-Cytokeratin 4 antibody

Package: 100 µl  
Store at: -20°C

### Summary

Product Description	Mouse Monoclonal antibody recognizes Cytokeratin 4
Tested Reactivity	Hu
Tested Application	IHC-P
Host	Mouse
Clonality	Monoclonal
Isotype	IgG1, kappa
Target Name	Cytokeratin 4
Species	Human
Immunogen	Synthetic peptide derived from Human Cytokeratin 4.
Conjugation	Un-conjugated
Alternate Names	K4; CK4; CK-4; CYK4; WSN1

### Application Instructions

Application table	Application	Dilution
	IHC-P	1:100 - 1:500

**Application Note** IHC-P: Antigen Retrieval: Citric acid buffer (pH 6.0) was used.  
\* The dilutions indicate recommended starting dilutions and the optimal dilutions or concentrations should be determined by the scientist.

### Properties

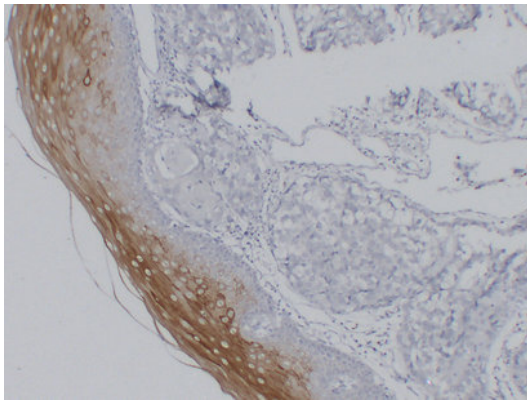
Form	Liquid
Purification	Affinity purification with immunogen.
Buffer	PBS, 0.02% Sodium azide, 50% Glycerol and 0.5% BSA.
Preservative	0.02% Sodium azide
Stabilizer	50% Glycerol and 0.5% BSA
Concentration	1 mg/ml
Storage instruction	For continuous use, store undiluted antibody at 2-8°C for up to a week. For long-term storage, aliquot and store at -20°C. Storage in frost free freezers is not recommended. Avoid repeated freeze/thaw cycles. Suggest spin the vial prior to opening. The antibody solution should be gently mixed before use.
Note	For laboratory research only, not for drug, diagnostic or other use.

### Bioinformation

Gene Symbol	KRT4
Gene Full Name	keratin 4
Background	The protein encoded by this gene is a member of the keratin gene family. The type II cytokeratins consist of basic or neutral proteins which are arranged in pairs of heterotypic keratin chains coexpressed during differentiation of simple and stratified epithelial tissues. This type II cytokeratin is specifically expressed in differentiated layers of the mucosal and esophageal epithelia with family member KRT13. Mutations in these genes have been associated with White Sponge Nevus, characterized by oral, esophageal, and anal leukoplakia. The type II cytokeratins are clustered in a region of chromosome 12q12-q13. [provided by RefSeq, Jul 2008]
Calculated Mw	57 kDa

## Images

---



ARG66492 anti-Cytokeratin 4 antibody IHC-P image

Immunohistochemistry: Paraffin-embedded Human esophageal squamous carcinoma stained with ARG66492 anti-Cytokeratin 4 antibody at 1:200 (4°C, overnight). Antigen Retrieval: Citric acid buffer (pH 6.0) was used.