

## ARG66495 anti-Desmin antibody

Package: 100 µl  
Store at: -20°C

### Summary

Product Description	Mouse Monoclonal antibody recognizes Desmin
Tested Reactivity	Hu
Tested Application	IHC-P
Host	Mouse
Clonality	Monoclonal
Isotype	IgG2b, kappa
Target Name	Desmin
Species	Human
Immunogen	Synthetic peptide derived from Human Desmin.
Conjugation	Un-conjugated
Alternate Names	LGMD2R; CSM1; Desmin; CSM2

### Application Instructions

Application table	Application	Dilution
	IHC-P	1:100 - 1:500

**Application Note** IHC-P: Antigen Retrieval: Tris/EDTA buffer (pH 8.0) was used.  
\* The dilutions indicate recommended starting dilutions and the optimal dilutions or concentrations should be determined by the scientist.

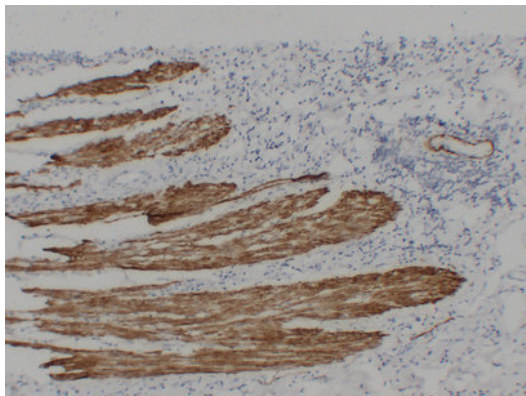
### Properties

Form	Liquid
Purification	Affinity purification with immunogen.
Buffer	PBS, 0.02% Sodium azide, 50% Glycerol and 0.5% BSA.
Preservative	0.02% Sodium azide
Stabilizer	50% Glycerol and 0.5% BSA
Concentration	1 mg/ml
Storage instruction	For continuous use, store undiluted antibody at 2-8°C for up to a week. For long-term storage, aliquot and store at -20°C. Storage in frost free freezers is not recommended. Avoid repeated freeze/thaw cycles. Suggest spin the vial prior to opening. The antibody solution should be gently mixed before use.
Note	For laboratory research only, not for drug, diagnostic or other use.

### Bioinformation

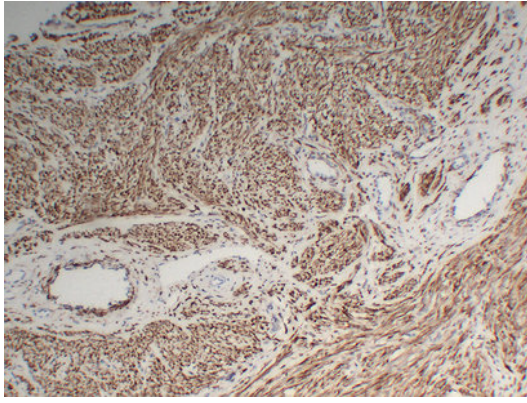
Gene Symbol	DES
Gene Full Name	desmin
Background	Desmin is a muscle-specific class III intermediate filament. Homopolymers of this protein form a stable intracytoplasmic filamentous network connecting myofibrils to each other and to the plasma membrane. Mutations in this gene are associated with desmin-related myopathy, a familial cardiac and skeletal myopathy (CSM), and with distal myopathies. [provided by RefSeq, Jul 2008]
Function	Desmin: Muscle-specific type III intermediate filament essential for proper muscular structure and function. Plays a crucial role in maintaining the structure of sarcomeres, inter-connecting the Z-disks and forming the myofibrils, linking them not only to the sarcolemmal cytoskeleton, but also to the nucleus and mitochondria, thus providing strength for the muscle fiber during activity (PubMed:25358400). In adult striated muscle they form a fibrous network connecting myofibrils to each other and to the plasma membrane from the periphery of the Z-line structures (PubMed:24200904, PubMed:25394388, PubMed:26724190). May act as a sarcomeric microtubule-anchoring protein: specifically associates with detyrosinated tubulin-alpha chains, leading to buckled microtubules and mechanical resistance to contraction. Contributes to the transcriptional regulation of the NKX2-5 gene in cardiac progenitor cells during a short period of cardiomyogenesis and in cardiac side population stem cells in the adult. Plays a role in maintaining an optimal conformation of nebullette (NEB) on heart muscle sarcomeres to bind and recruit cardiac alpha-actin. [UniProt]
Research Area	Cancer antibody; Cell Biology and Cellular Response antibody; Developmental Biology antibody; Signaling Transduction antibody; Smooth Muscle Marker antibody; Cardiomyocyte Cell Surface Marker antibody; Mural Cell Marker antibody; Microvascular Density Study antibody
Calculated Mw	54 kDa
PTM	ADP-ribosylation prevents ability to form intermediate filaments. [UniProt]
Cellular Localization	Cytoplasm, myofibril, sarcomere, Z line. Cytoplasm. Cell membrane, sarcolemma. Nucleus. Note=Localizes in the intercalated disks which occur at the Z line of cardiomyocytes (PubMed:24200904, PubMed:26724190). Localizes in the nucleus exclusively in differentiating cardiac progenitor cells and premature cardiomyocytes (By similarity). [UniProt]

## Images



ARG66495 anti-Desmin antibody IHC-P image

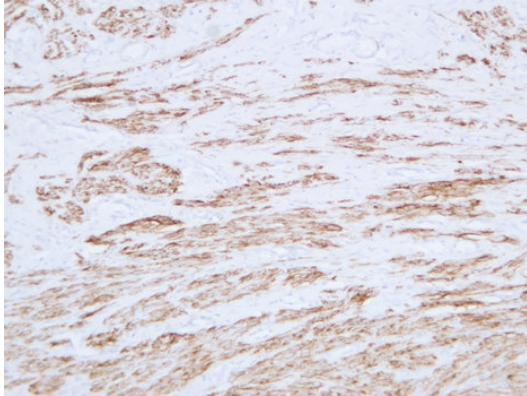
Immunohistochemistry: Paraffin-embedded Human colon stained with ARG66495 anti-Desmin antibody at 1:200 (4°C, overnight). Antigen Retrieval: Tris/EDTA buffer (pH 8.0) was used.



ARG66495 anti-Desmin antibody IHC-P image

Immunohistochemistry: Paraffin-embedded Human fibroid stained with ARG66495 anti-Desmin antibody at 1:200 (4°C, overnight). Antigen Retrieval: Tris/EDTA buffer (pH 8.0) was used.

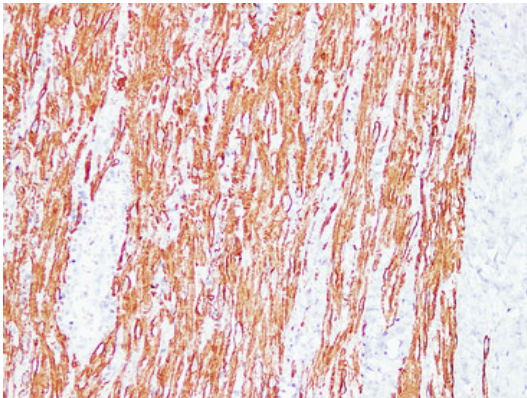
---



ARG66495 anti-Desmin antibody IHC-P image

Immunohistochemistry: Paraffin-embedded Human leiomyoma stained with ARG66495 anti-Desmin antibody at 1:200 (4°C, overnight). Antigen Retrieval: Tris/EDTA buffer (pH 8.0) was used.

---



ARG66495 anti-Desmin antibody IHC-P image

Immunohistochemistry: Paraffin-embedded Human appendix stained with ARG66495 anti-Desmin antibody at 1:200 (4°C, overnight). Antigen Retrieval: Tris/EDTA buffer (pH 8.0) was used.

---