

## ARG66496 anti-FLI1 antibody

Package: 100 µl  
Store at: -20°C

### Summary

Product Description	Mouse Monoclonal antibody recognizes FLI1
Tested Reactivity	Hu
Tested Application	IHC-P, WB
Host	Mouse
Clonality	Monoclonal
Isotype	IgG1, kappa
Target Name	FLI1
Species	Human
Immunogen	Synthetic peptide derived from Human FLI1.
Conjugation	Un-conjugated
Alternate Names	SIC-1; Friend leukemia integration 1 transcription factor; Proto-oncogene Fli-1; EWSR2; Transcription factor ERGB

### Application Instructions

Application table	Application	Dilution
	IHC-P	1:100 - 1:500
	WB	1:500 - 1:2000
Application Note	IHC-P: Antigen Retrieval: Tris/EDTA buffer (pH 8.0) was used. * The dilutions indicate recommended starting dilutions and the optimal dilutions or concentrations should be determined by the scientist.	
Observed Size	~ 52 kDa	

### Properties

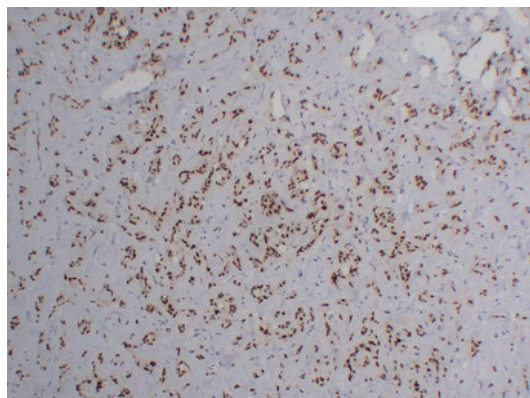
Form	Liquid
Purification	Affinity purification with immunogen.
Buffer	PBS, 0.02% Sodium azide, 50% Glycerol and 0.5% BSA.
Preservative	0.02% Sodium azide
Stabilizer	50% Glycerol and 0.5% BSA
Concentration	1 mg/ml
Storage instruction	For continuous use, store undiluted antibody at 2-8°C for up to a week. For long-term storage, aliquot and store at -20°C. Storage in frost free freezers is not recommended. Avoid repeated freeze/thaw cycles. Suggest spin the vial prior to opening. The antibody solution should be gently mixed before use.

Note For laboratory research only, not for drug, diagnostic or other use.

## Bioinformation

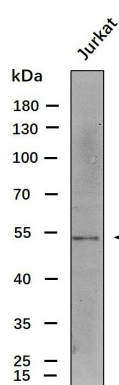
Gene Symbol	FLI1
Gene Full Name	Fli-1 proto-oncogene, ETS transcription factor
Background	This gene encodes a transcription factor containing an ETS DNA-binding domain. The gene can undergo a t(11;22)(q24;q12) translocation with the Ewing sarcoma gene on chromosome 22, which results in a fusion gene that is present in the majority of Ewing sarcoma cases. An acute lymphoblastic leukemia-associated t(4;11)(q21;q23) translocation involving this gene has also been identified. Alternative splicing results in multiple transcript variants. [provided by RefSeq, Aug 2012]
Function	Sequence-specific transcriptional activator. Recognizes the DNA sequence 5'-C[CA]GGAAGT-3'. [UniProt]
Calculated Mw	51 kDa
Cellular Localization	Nucleus. [UniProt]

## Images



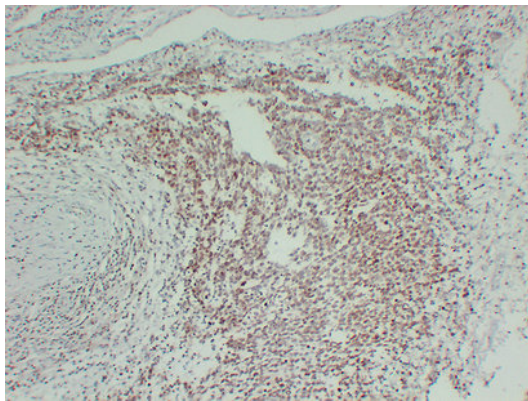
ARG66496 anti-FLI1 antibody IHC-P image

Immunohistochemistry: Paraffin-embedded Human hemangioendothelioma stained with ARG66496 anti-FLI1 antibody at 1:200 (4°C, overnight). Antigen Retrieval: Tris/EDTA buffer (pH 8.0) was used.



ARG66496 anti-FLI1 antibody WB image

Western blot: 30 µg of Jurkat whole cell lysate stained with ARG66496 anti-FLI1 antibody at 1:1000 dilution.



**ARG66496 anti-FLI1 antibody IHC-P image**

Immunohistochemistry: Paraffin-embedded Human primitive neuroectodermal tumor (PNET) stained with ARG66496 anti-FLI1 antibody at 1:200 (4°C, overnight). Antigen Retrieval: Tris/EDTA buffer (pH 8.0) was used.