

ARG66500 anti-SCGB2A2 / Mammaglobin A antibody

Package: 100 µl
Store at: -20°C

Summary

Product Description	Mouse Monoclonal antibody recognizes SCGB2A2 / Mammaglobin A
Tested Reactivity	Hu
Tested Application	IHC-P
Host	Mouse
Clonality	Monoclonal
Isotype	IgG1, kappa
Target Name	SCGB2A2 / Mammaglobin A
Species	Human
Immunogen	Synthetic peptide derived from Human SCGB2A2 / Mammaglobin A.
Conjugation	Un-conjugated
Alternate Names	UGB2; Secretoglobin family 2A member 2; MGB1; Mammaglobin-A; Mammaglobin-1

Application Instructions

Application table	Application	Dilution
	IHC-P	1:100 - 1:500
Application Note	IHC-P: Antigen Retrieval: Tris/EDTA buffer (pH 8.0) was used. * The dilutions indicate recommended starting dilutions and the optimal dilutions or concentrations should be determined by the scientist.	

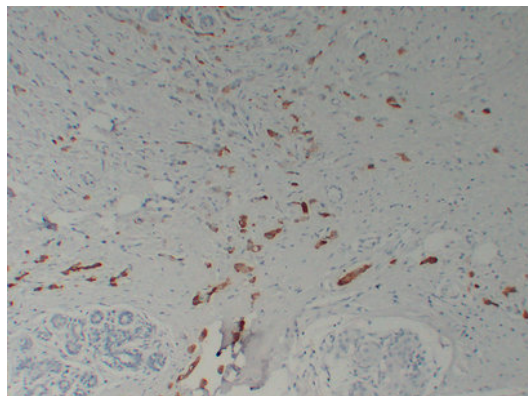
Properties

Form	Liquid
Purification	Affinity purification with immunogen.
Buffer	PBS, 0.02% Sodium azide, 50% Glycerol and 0.5% BSA.
Preservative	0.02% Sodium azide
Stabilizer	50% Glycerol and 0.5% BSA
Concentration	1 mg/ml
Storage instruction	For continuous use, store undiluted antibody at 2-8°C for up to a week. For long-term storage, aliquot and store at -20°C. Storage in frost free freezers is not recommended. Avoid repeated freeze/thaw cycles. Suggest spin the vial prior to opening. The antibody solution should be gently mixed before use.
Note	For laboratory research only, not for drug, diagnostic or other use.

Bioinformation

Gene Symbol	SCGB2A2
Gene Full Name	secretoglobin, family 2A, member 2
Calculated Mw	10 kDa

Images



ARG66500 anti-SCGB2A2 / Mammaglobin A antibody IHC-P image

Immunohistochemistry: Paraffin-embedded Human breast carcinoma stained with ARG66500 anti-SCGB2A2 / Mammaglobin A antibody at 1:200 (4°C, overnight). Antigen Retrieval: Tris/EDTA buffer (pH 8.0) was used.