

ARG66506 anti-ACPP antibody

Package: 100 µl
Store at: -20°C

Summary

| | |
|---------------------|--|
| Product Description | Mouse Monoclonal antibody recognizes ACPP |
| Tested Reactivity | Hu |
| Tested Application | IHC-P |
| Host | Mouse |
| Clonality | Monoclonal |
| Isotype | IgG1, kappa |
| Target Name | ACPP |
| Species | Human |
| Immunogen | Synthetic peptide derived from Human ACPP. |
| Conjugation | Un-conjugated |
| Alternate Names | PAP; ACP-3; TMPase; 5'-nucleotidase; ACP3; EC 3.1.3.5; Ecto-5'-nucleotidase; Thiamine monophosphatase; EC 3.1.3.2; 5'-NT; Prostatic acid phosphatase; PSAP |

Application Instructions

| Application table | Application | Dilution |
|-------------------|---|---------------|
| | IHC-P | 1:100 - 1:500 |
| Application Note | IHC-P: Antigen Retrieval: Tris/EDTA buffer (pH 8.0) was used. * The dilutions indicate recommended starting dilutions and the optimal dilutions or concentrations should be determined by the scientist. | |

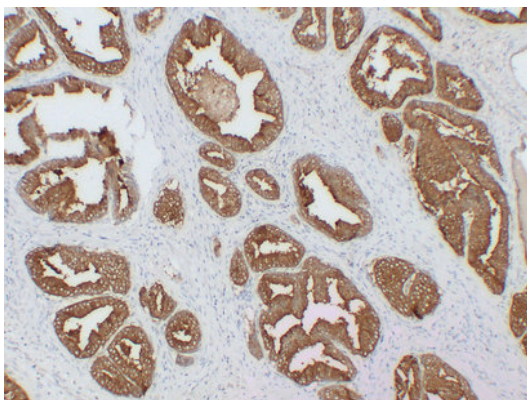
Properties

| | |
|---------------------|---|
| Form | Liquid |
| Purification | Affinity purification with immunogen. |
| Buffer | PBS, 0.02% Sodium azide, 50% Glycerol and 0.5% BSA. |
| Preservative | 0.02% Sodium azide |
| Stabilizer | 50% Glycerol and 0.5% BSA |
| Concentration | 1 mg/ml |
| Storage instruction | For continuous use, store undiluted antibody at 2-8°C for up to a week. For long-term storage, aliquot and store at -20°C. Storage in frost free freezers is not recommended. Avoid repeated freeze/thaw cycles. Suggest spin the vial prior to opening. The antibody solution should be gently mixed before use. |
| Note | For laboratory research only, not for drug, diagnostic or other use. |

Bioinformation

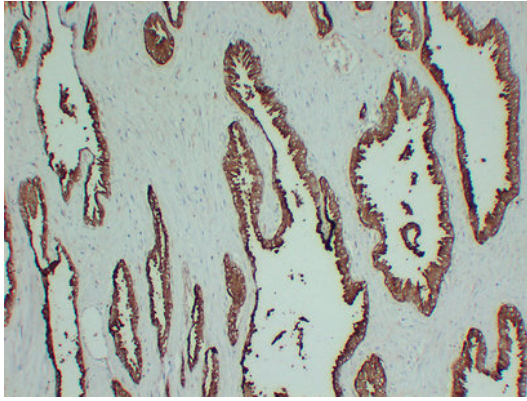
| | |
|-----------------------|---|
| Gene Symbol | ACPP |
| Gene Full Name | acid phosphatase, prostate |
| Background | ACPP is an enzyme that catalyzes the conversion of orthophosphoric monoester to alcohol and orthophosphate. It is synthesized under androgen regulation and is secreted by the epithelial cells of the prostate gland. An alternatively spliced transcript variant encoding a longer isoform has been found for this gene. This isoform contains a transmembrane domain and is localized in the plasma membrane-endosomal-lysosomal pathway. [provided by RefSeq, Sep 2008] |
| Function | <p>ACPP is a non-specific tyrosine phosphatase. It dephosphorylates a diverse number of substrates under acidic conditions (pH 4-6) including alkyl, aryl, and acyl orthophosphate monoesters and phosphorylated proteins. Has lipid phosphatase activity and inactivates lysophosphatidic acid in seminal plasma.</p> <p>Isoform 2: the cellular form also has ecto-5'-nucleotidase activity in dorsal root ganglion (DRG) neurons. Generates adenosine from AMP which acts as a pain suppressor. Acts as a tumor suppressor of prostate cancer through dephosphorylation of ERBB2 and deactivation of MAPK-mediated signaling. [UniProt]</p> |
| Calculated Mw | 45 kDa |
| PTM | <p>N-glycosylated. High mannose content, partially sialylated and fucosylated biantennary complex. Also fucosylated with partially sialylated triantennary complex oligosaccharides.</p> <p>Proteolytically cleaved in seminal fluid to produce several peptides. Peptide PAPf39, the most prominent, forms amyloid beta-sheet fibrils, SEVI (semen-derived enhancer of viral infection) which entrap HIV virions, attach them to target cells and enhance infection. SEVI amyloid fibrils are degraded by polyphenol epigallocatechin-3-gallate (EGCG), a constituent of green tea. Target cell attachment and enhancement of HIV infection is inhibited by surfen. Also similarly boosts XMRV (xenotropic murine leukemia virus-related virus) infection. [UniProt]</p> |
| Cellular Localization | Isoform 1: Secreted. Isoform 2: Cell membrane; Single-pass type I membrane protein. Lysosome membrane; Single-pass type I membrane protein. Note=Appears to shuttle between the cell membrane and intracellular vesicles. Colocalizes with FLOT1 at cell membrane and in intracellular vesicles (PubMed:17638863). Colocalizes with LAMP2 on the lysosome membrane (PubMed:17897319). [UniProt] |

Images



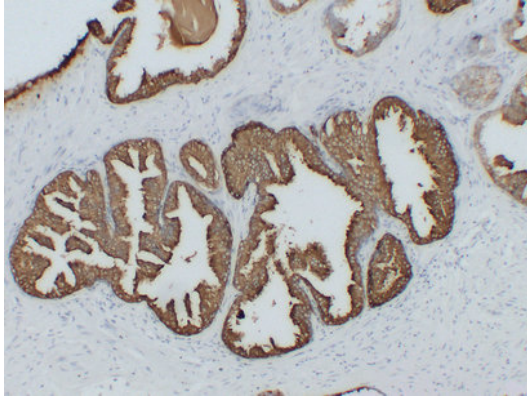
ARG66506 anti-ACPP antibody IHC-P image

Immunohistochemistry: Paraffin-embedded Human benign prostatic hyperplasia stained with ARG66506 anti-ACPP antibody at 1:200 (4°C, overnight). Antigen Retrieval: Tris/EDTA buffer (pH 8.0) was used.



ARG66506 anti-ACPP antibody IHC-P image

Immunohistochemistry: Paraffin-embedded Human prostate stained with ARG66506 anti-ACPP antibody at 1:200 (4°C, overnight). Antigen Retrieval: Tris/EDTA buffer (pH 8.0) was used.



ARG66506 anti-ACPP antibody IHC-P image

Immunohistochemistry: Paraffin-embedded Human prostatic carcinoma stained with ARG66506 anti-ACPP antibody at 1:200 (4°C, overnight). Antigen Retrieval: Tris/EDTA buffer (pH 8.0) was used.
