

ARG66516 anti-FSH / Follicle Stimulating Hormone antibody

Package: 100 µl
Store at: -20°C

Summary

Product Description	Mouse Monoclonal antibody recognizes FSH / Follicle Stimulating Hormone
Tested Reactivity	Hu
Tested Application	IHC-P
Host	Mouse
Clonality	Monoclonal
Isotype	IgG3, kappa
Target Name	FSH / Follicle Stimulating Hormone
Species	Human
Immunogen	Synthetic peptide derived from Human FSH / Follicle Stimulating Hormone.
Conjugation	Un-conjugated
Alternate Names	FSH-B; Follitropin subunit beta; HH24; FSH-beta; Follitropin beta chain; Follicle-stimulating hormone beta subunit

Application Instructions

Application table	Application	Dilution
	IHC-P	1:100 - 1:500
Application Note	IHC-P: Antigen Retrieval: Tris/EDTA buffer (pH 8.0) was used. * The dilutions indicate recommended starting dilutions and the optimal dilutions or concentrations should be determined by the scientist.	

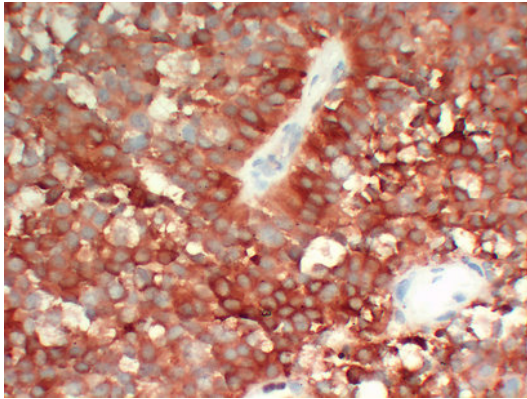
Properties

Form	Liquid
Purification	Affinity purification with immunogen.
Buffer	PBS, 0.02% Sodium azide, 50% Glycerol and 0.5% BSA.
Preservative	0.02% Sodium azide
Stabilizer	50% Glycerol and 0.5% BSA
Concentration	1 mg/ml
Storage instruction	For continuous use, store undiluted antibody at 2-8°C for up to a week. For long-term storage, aliquot and store at -20°C. Storage in frost free freezers is not recommended. Avoid repeated freeze/thaw cycles. Suggest spin the vial prior to opening. The antibody solution should be gently mixed before use.
Note	For laboratory research only, not for drug, diagnostic or other use.

Bioinformation

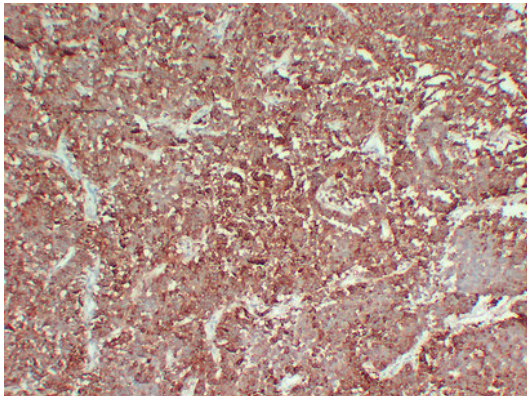
Gene Symbol	FSHB
Gene Full Name	follicle stimulating hormone, beta polypeptide
Background	The pituitary glycoprotein hormone family includes follicle-stimulating hormone, luteinizing hormone, chorionic gonadotropin, and thyroid-stimulating hormone. All of these glycoproteins consist of an identical alpha subunit and a hormone-specific beta subunit. This gene encodes the beta subunit of follicle-stimulating hormone. In conjunction with luteinizing hormone, follicle-stimulating hormone induces egg and sperm production. Alternative splicing results in two transcript variants encoding the same protein. [provided by RefSeq, Jul 2008]
Function	Stimulates development of follicle and spermatogenesis in the reproductive organs. [UniProt]
Calculated Mw	15 kDa
Cellular Localization	Secreted. [UniProt]

Images



ARG66516 anti-FSH / Follicle Stimulating Hormone antibody IHC-P image

Immunohistochemistry: Paraffin-embedded Human pituitary adenoma (high magnification) stained with ARG66516 anti-FSH / Follicle Stimulating Hormone antibody at 1:200 (4°C, overnight). Antigen Retrieval: Tris/EDTA buffer (pH 8.0) was used.



ARG66516 anti-FSH / Follicle Stimulating Hormone antibody IHC-P image

Immunohistochemistry: Paraffin-embedded Human pituitary adenoma stained with ARG66516 anti-FSH / Follicle Stimulating Hormone antibody at 1:200 (4°C, overnight). Antigen Retrieval: Tris/EDTA buffer (pH 8.0) was used.