

ARG66537 anti-LCP2 / SLP76 phospho (Tyr128) antibody

Package: 100 µg
Store at: -20°C

Summary

| | |
|---------------------|--|
| Product Description | Rabbit Polyclonal antibody recognizes LCP2 / SLP76 phospho (Tyr128) |
| Tested Reactivity | Hu |
| Tested Application | IHC-P, WB |
| Host | Rabbit |
| Clonality | Polyclonal |
| Isotype | IgG |
| Target Name | LCP2 / SLP76 |
| Species | Human |
| Immunogen | Phosphospecific peptide around Tyr128 of Human SLP76. |
| Conjugation | Un-conjugated |
| Alternate Names | Lymphocyte cytosolic protein 2; SLP-76 tyrosine phosphoprotein; SLP76; SH2 domain-containing leukocyte protein of 76 kDa; SLP-76 |

Application Instructions

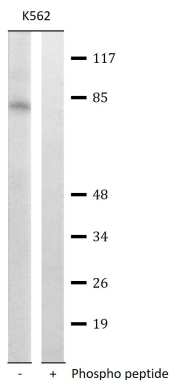
| Application table | Application | Dilution |
|-------------------|--|----------------|
| | IHC-P | 1:100 - 1:300 |
| | WB | 1:500 - 1:2000 |
| Application Note | * The dilutions indicate recommended starting dilutions and the optimal dilutions or concentrations should be determined by the scientist. | |

Properties

| | |
|---------------------|---|
| Form | Liquid |
| Purification | Affinity purification with immunogen. |
| Buffer | PBS, 0.02% Sodium azide, 50% Glycerol and 0.5% BSA. |
| Preservative | 0.02% Sodium azide |
| Stabilizer | 50% Glycerol and 0.5% BSA |
| Concentration | 1 mg/ml |
| Storage instruction | For continuous use, store undiluted antibody at 2-8°C for up to a week. For long-term storage, aliquot and store at -20°C. Storage in frost free freezers is not recommended. Avoid repeated freeze/thaw cycles. Suggest spin the vial prior to opening. The antibody solution should be gently mixed before use. |
| Note | For laboratory research only, not for drug, diagnostic or other use. |

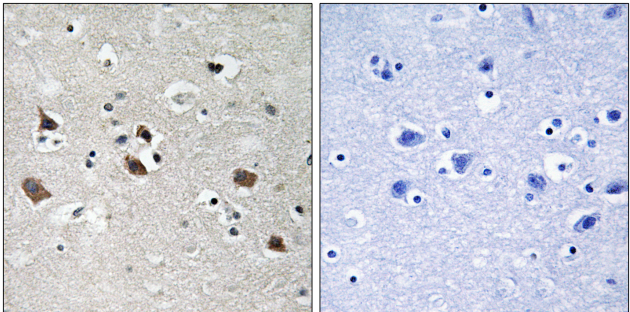
| | |
|-----------------------|---|
| Gene Symbol | LCP2 |
| Gene Full Name | lymphocyte cytosolic protein 2 (SH2 domain containing leukocyte protein of 76kDa) |
| Background | SLP-76 was originally identified as a substrate of the ZAP-70 protein tyrosine kinase following T cell receptor (TCR) ligation in the leukemic T cell line Jurkat. The SLP-76 locus has been localized to human chromosome 5q33 and the gene structure has been partially characterized in mice. The human and murine cDNAs both encode 533 amino acid proteins that are 72% identical and comprised of three modular domains. The NH2-terminus contains an acidic region that includes a PEST domain and several tyrosine residues which are phosphorylated following TCR ligation. SLP-76 also contains a central proline-rich domain and a COOH-terminal SH2 domain. A number of additional proteins have been identified that associate with SLP-76 both constitutively and inducibly following receptor ligation, supporting the notion that SLP-76 functions as an adaptor or scaffold protein. Studies using SLP-76 deficient T cell lines or mice have provided strong evidence that SLP-76 plays a positive role in promoting T cell development and activation as well as mast cell and platelet function. [provided by RefSeq, Jul 2008] |
| Function | Involved in T-cell antigen receptor mediated signaling. [UniProt] |
| Calculated Mw | 60 kDa |
| PTM | Phosphorylated after T-cell receptor activation by ZAP70, ITK and TXK, which leads to the up-regulation of Th1 preferred cytokine IL-2. SYK-dependent phosphorylation is required for recruitment of PI3K signaling components. [UniProt] |
| Cellular Localization | Cytoplasm. [UniProt] |

Images



ARG66537 anti-LCP2 / SLP76 phospho (Tyr128) antibody WB image

Western blot: K562 cells treated with Na3VO4 (0.3 nM for 40 min) and stained with ARG66537 anti-LCP2 / SLP76 phospho (Tyr128) antibody. The lane on the right is blocked with the phospho peptide.



ARG66537 anti-LCP2 / SLP76 phospho (Tyr128) antibody IHC-P image

Immunohistochemistry: Paraffin-embedded Human brain stained with ARG66537 anti-LCP2 / SLP76 phospho (Tyr128) antibody. The picture on the right is blocked with the phospho peptide.