

## ARG66553 anti-MYBL2 / B MYB antibody

Package: 100 µl  
Store at: -20°C

### Summary

Product Description	Rabbit Polyclonal antibody recognizes MYBL2 / B MYB
Tested Reactivity	Hu, Ms
Tested Application	ICC/IF, WB
Host	Rabbit
Clonality	Polyclonal
Isotype	IgG
Target Name	MYBL2 / B MYB
Species	Human
Immunogen	KLH-conjugated synthetic peptide encompassing a sequence within the C-term region of Human MYBL2.
Conjugation	Un-conjugated
Alternate Names	B-MYB; Myb-related protein B; B-Myb; BMYB; Myb-like protein 2

### Application Instructions

Application table	Application	Dilution
	ICC/IF	1:100 - 1:500
	WB	1:500 - 1:1000
Application Note	* The dilutions indicate recommended starting dilutions and the optimal dilutions or concentrations should be determined by the scientist.	

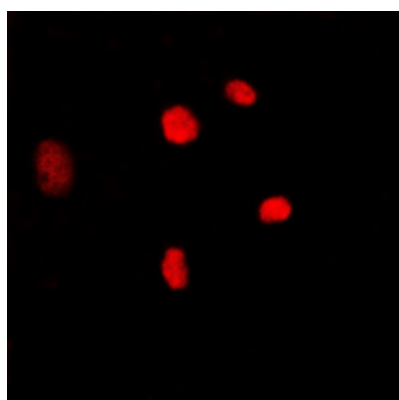
### Properties

Form	Liquid
Purification	Affinity purification with immunogen.
Buffer	0.42% Potassium phosphate (pH 7.3), 0.87% NaCl, 0.01% Sodium azide and 30% Glycerol.
Preservative	0.01% Sodium azide
Stabilizer	30% Glycerol
Storage instruction	For continuous use, store undiluted antibody at 2-8°C for up to a week. For long-term storage, aliquot and store at -20°C. Storage in frost free freezers is not recommended. Avoid repeated freeze/thaw cycles. Suggest spin the vial prior to opening. The antibody solution should be gently mixed before use.
Note	For laboratory research only, not for drug, diagnostic or other use.

### Bioinformation

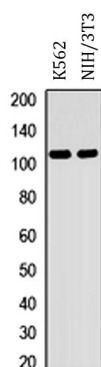
Gene Symbol	MYBL2
Gene Full Name	v-myb avian myeloblastosis viral oncogene homolog-like 2
Background	The protein encoded by this gene, a member of the MYB family of transcription factor genes, is a nuclear protein involved in cell cycle progression. The encoded protein is phosphorylated by cyclin A/cyclin-dependent kinase 2 during the S-phase of the cell cycle and possesses both activator and repressor activities. It has been shown to activate the cell division cycle 2, cyclin D1, and insulin-like growth factor-binding protein 5 genes. Two transcript variants encoding different isoforms have been found for this gene. [provided by RefSeq, Jul 2013]
Function	Transcription factor involved in the regulation of cell survival, proliferation, and differentiation. Transactivates the expression of the CLU gene. [UniProt]
Calculated Mw	79 kDa
PTM	Phosphorylated by cyclin A/CDK2 during S-phase. Phosphorylation at Thr-520 is probably involved in transcriptional activity. [UniProt]
Cellular Localization	Nucleus. [UniProt]

## Images



ARG66553 anti-MYBL2 / B MYB antibody ICC/IF image

Immunofluorescence: Formalin-fixed K562 cells were permeabilized with 0.1% Triton X-100 in TBS for 5-10 minutes and blocked with 3% BSA-PBS for 30 minutes at room temperature. Cells were stained with ARG66553 anti-MYBL2 / B MYB antibody (red) in 3% BSA-PBS and incubated overnight at 4°C in a humidified chamber. DAPI was used to stain the cell nuclei (blue).



ARG66553 anti-MYBL2 / B MYB antibody WB image

Western blot: K562 and NIH/3T3 whole cell lysates stained with ARG66553 anti-MYBL2 / B MYB antibody.