

ARG66582 anti-PCCB antibody

Package: 100 µl
Store at: -20°C

Summary

Product Description	Rabbit Polyclonal antibody recognizes PCCB
Tested Reactivity	Hu, Ms
Tested Application	ICC/IF, IHC-P, WB
Host	Rabbit
Clonality	Polyclonal
Isotype	IgG
Target Name	PCCB
Species	Human
Immunogen	Recombinant full length protein of Human PCCB.
Conjugation	Un-conjugated
Alternate Names	PCCase subunit beta; EC 6.4.1.3; Propanoyl-CoA:carbon dioxide ligase subunit beta; Propionyl-CoA carboxylase beta chain, mitochondrial

Application Instructions

Application table	Application	Dilution
	ICC/IF	1:50 - 1:200
	IHC-P	1:50 - 1:200
	WB	1:500 - 1:2000
Application Note	IHC-P: Antigen Retrieval: Heat mediation was performed in Sodium citrate buffer (pH 6.0). * The dilutions indicate recommended starting dilutions and the optimal dilutions or concentrations should be determined by the scientist.	

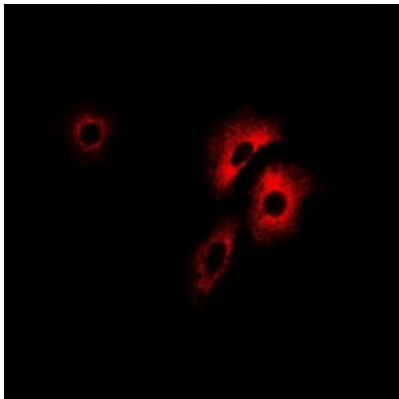
Properties

Form	Liquid
Purification	Affinity purification with immunogen.
Buffer	0.42% Potassium phosphate (pH 7.3), 0.87% NaCl, 0.01% Sodium azide and 30% Glycerol.
Preservative	0.01% Sodium azide
Stabilizer	30% Glycerol
Storage instruction	For continuous use, store undiluted antibody at 2-8°C for up to a week. For long-term storage, aliquot and store at -20°C. Storage in frost free freezers is not recommended. Avoid repeated freeze/thaw cycles. Suggest spin the vial prior to opening. The antibody solution should be gently mixed before use.
Note	For laboratory research only, not for drug, diagnostic or other use.

Bioinformation

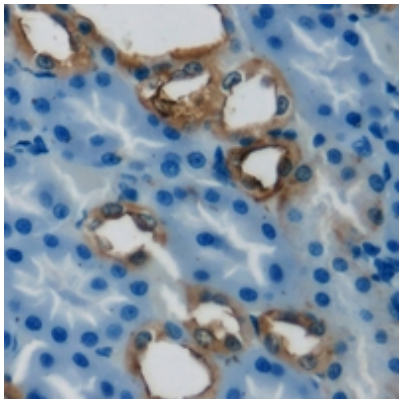
Gene Symbol	PCCB
Gene Full Name	propionyl CoA carboxylase, beta polypeptide
Background	The protein encoded by this gene is a subunit of the propionyl-CoA carboxylase (PCC) enzyme, which is involved in the catabolism of propionyl-CoA. PCC is a mitochondrial enzyme that probably acts as a dodecamer of six alpha subunits and six beta subunits. This gene encodes the beta subunit of PCC. Defects in this gene are a cause of propionic acidemia type II (PA-2). Multiple transcript variants encoding different isoforms have been found for this gene.[provided by RefSeq, May 2010]
Calculated Mw	58 kDa
Cellular Localization	Mitochondrion matrix. [UniProt]

Images



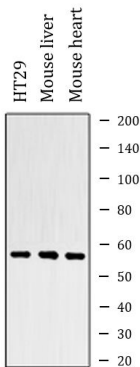
ARG66582 anti-PCCB antibody ICC/IF image

Immunofluorescence: Formalin-fixed U2OS cells were permeabilized with 0.1% Triton X-100 in TBS for 5-10 minutes and blocked with 3% BSA-PBS for 30 minutes at room temperature. Cells were stained with ARG66582 anti-PCCB antibody (red) in 3% BSA-PBS and incubated overnight at 4°C.



ARG66582 anti-PCCB antibody IHC-P image

Immunohistochemistry: Formalin-fixed and paraffin-embedded Human kidney tissue. Antigen Retrieval: Heat mediation was performed in Sodium citrate buffer (pH 6.0). The section was then stained with ARG66582 anti-PCCB antibody at room temperature and detected using an HRP conjugated compact polymer system. DAB was used as the chromogen. The section was counterstained with haematoxylin and mounted with DPX.



ARG66582 anti-PCCB antibody WB image

Western blot: HT29, Mouse liver and Mouse heart lysates stained with ARG66582 anti-PCCB antibody.