

ARG66587 anti-RUNX1 / AML1 phospho (Ser276) antibody

Package: 100 µl
Store at: -20°C

Summary

Product Description	Rabbit Polyclonal antibody recognizes RUNX1 / AML1 phospho (Ser276)
Tested Reactivity	Hu
Predict Reactivity	Ms, Rat, Chk, Pig
Tested Application	IHC-P, WB
Host	Rabbit
Clonality	Polyclonal
Isotype	IgG
Target Name	RUNX1 / AML1
Species	Human
Immunogen	KLH-conjugated phosphospecific peptide around Ser276 of Human RUNX1.
Conjugation	Un-conjugated
Alternate Names	Acute myeloid leukemia 1 protein; Oncogene AML-1; PEBP2-alpha B; Polyomavirus enhancer-binding protein 2 alpha B subunit; Runt-related transcription factor 1; AML1; CBFA2; AML1-EVI-1; CBF2alpha; PEBP2alpha; AMLCR1; EVI-1; SL3-3 enhancer factor 1 alpha B subunit; Core-binding factor subunit alpha-2; PEBP2aB; CBF-alpha-2; SL3/AKV core-binding factor alpha B subunit; PEA2-alpha B

Application Instructions

Application table	Application	Dilution
	IHC-P	1:100 - 1:200
	WB	1:500 - 1:1000
Application Note	IHC-P: Antigen Retrieval: Heat mediation was performed in Sodium citrate buffer (pH 6.0). * The dilutions indicate recommended starting dilutions and the optimal dilutions or concentrations should be determined by the scientist.	
Observed Size	55 kDa	

Properties

Form	Liquid
Purification	Affinity purification with immunogen.
Buffer	0.42% Potassium phosphate (pH 7.3), 0.87% NaCl, 0.01% Sodium azide and 30% Glycerol.
Preservative	0.01% Sodium azide
Stabilizer	30% Glycerol
Storage instruction	For continuous use, store undiluted antibody at 2-8°C for up to a week. For long-term storage, aliquot and store at -20°C. Storage in frost free freezers is not recommended. Avoid repeated freeze/thaw

cycles. Suggest spin the vial prior to opening. The antibody solution should be gently mixed before use.

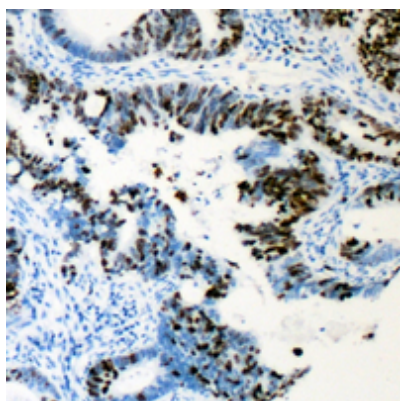
Note

For laboratory research only, not for drug, diagnostic or other use.

Bioinformation

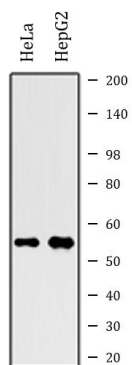
Gene Symbol	RUNX1
Gene Full Name	runt-related transcription factor 1
Background	Core binding factor (CBF) is a heterodimeric transcription factor that binds to the core element of many enhancers and promoters. The protein encoded by this gene represents the alpha subunit of CBF and is thought to be involved in the development of normal hematopoiesis. Chromosomal translocations involving this gene are well-documented and have been associated with several types of leukemia. Three transcript variants encoding different isoforms have been found for this gene. [provided by RefSeq, Jul 2008]
Function	CBF binds to the core site, 5'-PYGPYGGT-3', of a number of enhancers and promoters, including murine leukemia virus, polyomavirus enhancer, T-cell receptor enhancers, LCK, IL-3 and GM-CSF promoters. The alpha subunit binds DNA and appears to have a role in the development of normal hematopoiesis. Isoform AML-1L interferes with the transactivation activity of RUNX1. Acts synergistically with ELF4 to transactivate the IL-3 promoter and with ELF2 to transactivate the mouse BLK promoter. Inhibits KAT6B-dependent transcriptional activation. Controls the anergy and suppressive function of regulatory T-cells (Treg) by associating with FOXP3. Activates the expression of IL2 and IFNG and down-regulates the expression of TNFRSF18, IL2RA and CTLA4, in conventional T-cells. [UniProt]
Calculated Mw	49 kDa
PTM	Phosphorylated in its C-terminus upon IL-6 treatment. Phosphorylation enhances interaction with KAT6A. Methylated. Phosphorylated in Ser-249 Thr-273 and Ser-276 by HIPK2 when associated with CBFB and DNA. This phosphorylation promotes subsequent EP300 phosphorylation. [UniProt]
Cellular Localization	Nucleus. [UniProt]

Images



ARG66587 anti-RUNX1 / AML1 phospho (Ser276) antibody IHC-P image

Immunohistochemistry: Formalin-fixed and paraffin-embedded Human colon cancer tissue. Antigen Retrieval: Heat mediation was performed in Sodium citrate buffer (pH 6.0). The section was then stained with ARG66587 anti-RUNX1 / AML1 phospho (Ser276) antibody at room temperature and detected using an HRP conjugated compact polymer system. DAB was used as the chromogen. The section was then counterstained with haematoxylin and mounted with DPX.



ARG66587 anti-RUNX1 / AML1 phospho (Ser276) antibody WB image

Western blot: HeLa and HepG2 whole cell lysates stained with ARG66587 anti-RUNX1 / AML1 phospho (Ser276) antibody.