

ARG66588 anti-Cyclophilin B antibody

Package: 100 µg
Store at: -20°C

Summary

Product Description	Mouse Monoclonal antibody recognizes Cyclophilin B
Tested Reactivity	Hu, Ms, Rat, Mk
Tested Application	IHC-P, WB
Host	Mouse
Clonality	Monoclonal
Isotype	IgG
Target Name	Cyclophilin B
Species	Human
Immunogen	Synthetic peptide from Human Cyclophilin B.
Conjugation	Un-conjugated
Alternate Names	HEL-S-39; CYPB; PPIase B; CYP-S1; Cyclophilin B; SCYLP; EC 5.2.1.8; S-cyclophilin; OI9; Rotamase B; Peptidyl-prolyl cis-trans isomerase B

Application Instructions

Application table	Application	Dilution
	IHC-P	1:50 - 1:300
	WB	1:1000 - 1:2000
Application Note	IHC-P: Antigen Retrieval: Heat mediation was performed in Sodium citrate buffer (pH 6.0) for 20 min. * The dilutions indicate recommended starting dilutions and the optimal dilutions or concentrations should be determined by the scientist.	
Observed Size	24 kDa	

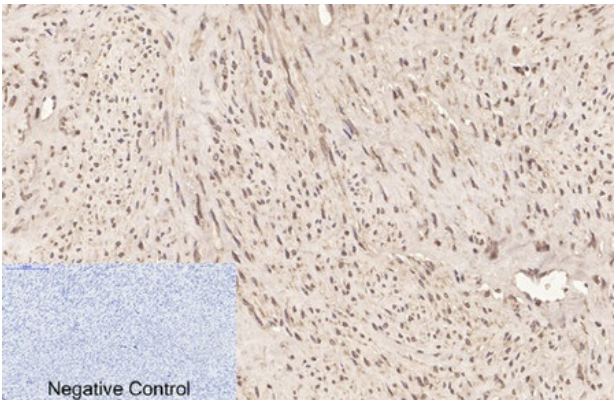
Properties

Form	Liquid
Purification	Affinity purification with immunogen.
Buffer	PBS, 0.02% Sodium azide, 50% Glycerol and 0.5% BSA.
Preservative	0.02% Sodium azide
Stabilizer	50% Glycerol and 0.5% BSA
Concentration	1 mg/ml
Storage instruction	For continuous use, store undiluted antibody at 2-8°C for up to a week. For long-term storage, aliquot and store at -20°C. Storage in frost free freezers is not recommended. Avoid repeated freeze/thaw cycles. Suggest spin the vial prior to opening. The antibody solution should be gently mixed before use.

Bioinformation

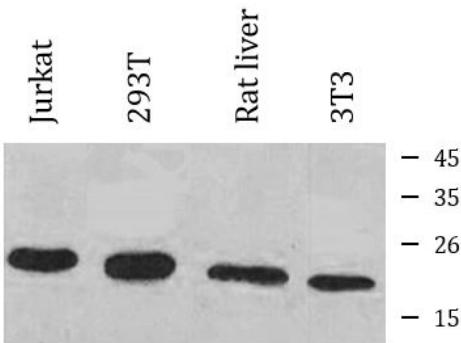
Gene Symbol	PPIB
Gene Full Name	peptidylprolyl isomerase B (cyclophilin B)
Background	The protein encoded by this gene is a cyclosporine-binding protein and is mainly located within the endoplasmic reticulum. It is associated with the secretory pathway and released in biological fluids. This protein can bind to cells derived from T- and B-lymphocytes, and may regulate cyclosporine A-mediated immunosuppression. Variants have been identified in this protein that give rise to recessive forms of osteogenesis imperfecta. [provided by RefSeq, Oct 2009]
Function	PPIases accelerate the folding of proteins. It catalyzes the cis-trans isomerization of proline imidic peptide bonds in oligopeptides. [UniProt]
Calculated Mw	24 kDa
Cellular Localization	Endoplasmic reticulum lumen. Melanosome. Note=Identified by mass spectrometry in melanosome fractions from stage I to stage IV (PubMed:17081065). [UniProt]

Images



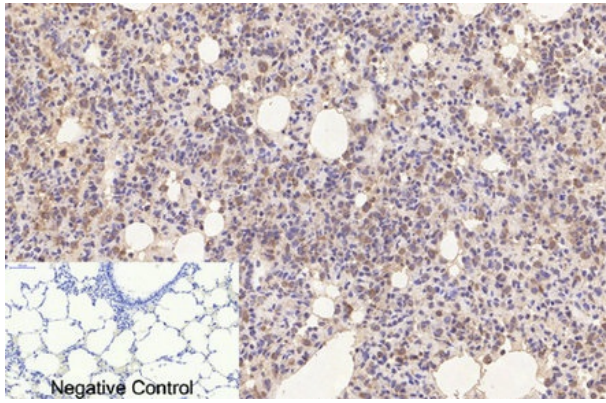
ARG66588 anti-Cyclophilin B antibody IHC-P image

Immunohistochemistry: Paraffin-embedded Human uterus tissue stained with ARG66588 anti-Cyclophilin B antibody at 1:200 dilution (4°C, overnight). Antigen Retrieval: Heat mediation was performed in Sodium citrate buffer (pH 6.0) for 20 min. Negative control was used by secondary antibody only.



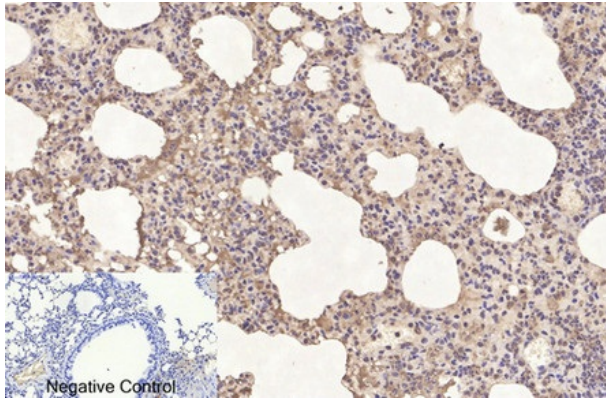
ARG66588 anti-Cyclophilin B antibody WB image

Western blot: Jurkat, 293T, Rat liver and 3T3 cell lysates stained with ARG66588 anti-Cyclophilin B antibody at 1:2000 dilution.



ARG66588 anti-Cyclophilin B antibody IHC-P image

Immunohistochemistry: Paraffin-embedded Rat lung tissue stained with ARG66588 anti-Cyclophilin B antibody at 1:200 dilution (4°C, overnight). Antigen Retrieval: Heat mediation was performed in Sodium citrate buffer (pH 6.0) for 20 min. Negative control was used by secondary antibody only.



ARG66588 anti-Cyclophilin B antibody IHC-P image

Immunohistochemistry: Paraffin-embedded Mouse lung tissue stained with ARG66588 anti-Cyclophilin B antibody at 1:200 dilution (4°C, overnight). Antigen Retrieval: Heat mediation was performed in Sodium citrate buffer (pH 6.0) for 20 min. Negative control was used by secondary antibody only.