

## ARG66625 anti-RFC3 antibody

Package: 100 µg  
Store at: -20°C

### Summary

Product Description	Rabbit Polyclonal antibody recognizes RFC3
Tested Reactivity	Hu
Tested Application	IHC-P, WB
Host	Rabbit
Clonality	Polyclonal
Isotype	IgG
Target Name	RFC3
Species	Human
Immunogen	Synthetic peptide around the internal region of Human RFC3.
Conjugation	Un-conjugated
Alternate Names	Activator 1 38 kDa subunit; Activator 1 subunit 3; RFC38; A1 38 kDa subunit; Replication factor C subunit 3; Replication factor C 38 kDa subunit; RF-C 38 kDa subunit

### Application Instructions

Application table	Application	Dilution
	IHC-P	1:100 - 1:300
	WB	1:500 - 1:2000
Application Note	* The dilutions indicate recommended starting dilutions and the optimal dilutions or concentrations should be determined by the scientist.	
Observed Size	~ 41 kDa	

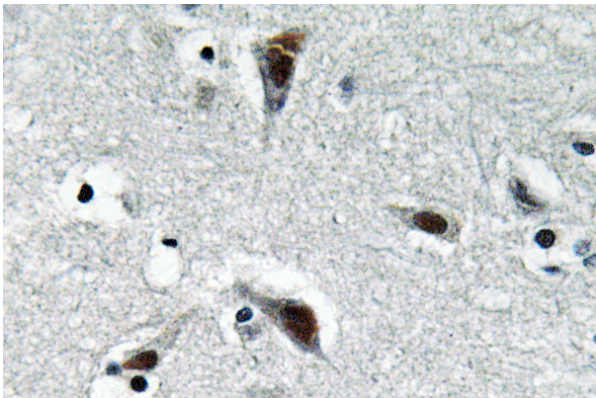
### Properties

Form	Liquid
Purification	Affinity purification with immunogen.
Buffer	PBS, 0.02% Sodium azide, 50% Glycerol and 0.5% BSA.
Preservative	0.02% Sodium azide
Stabilizer	50% Glycerol and 0.5% BSA
Concentration	1 mg/ml
Storage instruction	For continuous use, store undiluted antibody at 2-8°C for up to a week. For long-term storage, aliquot and store at -20°C. Storage in frost free freezers is not recommended. Avoid repeated freeze/thaw cycles. Suggest spin the vial prior to opening. The antibody solution should be gently mixed before use.
Note	For laboratory research only, not for drug, diagnostic or other use.

Bioinformation

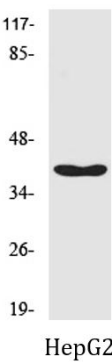
Gene Symbol	RFC3
Gene Full Name	replication factor C (activator 1) 3, 38kDa
Background	The elongation of primed DNA templates by DNA polymerase delta and DNA polymerase epsilon requires the accessory proteins proliferating cell nuclear antigen (PCNA) and replication factor C (RFC). RFC, also named activator 1, is a protein complex consisting of five distinct subunits of 140, 40, 38, 37, and 36 kDa. This gene encodes the 38 kDa subunit. This subunit is essential for the interaction between the 140 kDa subunit and the core complex that consists of the 36, 37, and 40 kDa subunits. Alternatively spliced transcript variants encoding distinct isoforms have been described. [provided by RefSeq, Jul 2008]
Function	The elongation of primed DNA templates by DNA polymerase delta and epsilon requires the action of the accessory proteins proliferating cell nuclear antigen (PCNA) and activator 1. [UniProt]
Calculated Mw	41 kDa
Cellular Localization	Nucleus. [UniProt]

Images



ARG66625 anti-RFC3 antibody IHC-P image

Immunohistochemistry: Paraffin-embedded Human brain tissue stained with ARG66625 anti-RFC3 antibody.



ARG66625 anti-RFC3 antibody WB image

Western blot: HepG2 cell nucleus lysate stained with ARG66625 anti-RFC3 antibody.