

## ARG66637 anti-LAT phospho (Tyr200) antibody

Package: 100 µg  
Store at: -20°C

### Summary

Product Description	Rabbit Polyclonal antibody recognizes LAT phospho (Tyr200)
Tested Reactivity	Hu, Ms
Tested Application	IHC-P, WB
Specificity	Isoform 1: Phosphorylated at Tyr200. Isoform 2: Phosphorylated at Tyr191.
Host	Rabbit
Clonality	Polyclonal
Isotype	IgG
Target Name	LAT
Species	Human
Immunogen	Phosphospecific peptide around Tyr200 of Human LAT.
Conjugation	Un-conjugated
Alternate Names	Linker for activation of T-cells family member 1; 36 kDa phospho-tyrosine adapter protein; pp36; LAT1; p36-38

### Application Instructions

Application table	Application	Dilution
	IHC-P	1:100 - 1:300
	WB	1:500 - 1:2000
Application Note	* The dilutions indicate recommended starting dilutions and the optimal dilutions or concentrations should be determined by the scientist.	
Observed Size	28 kDa	

### Properties

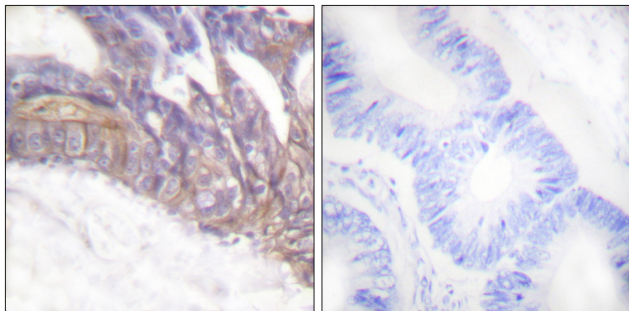
Form	Liquid
Purification	Affinity purification with immunogen.
Buffer	PBS, 0.02% Sodium azide, 50% Glycerol and 0.5% BSA.
Preservative	0.02% Sodium azide
Stabilizer	50% Glycerol and 0.5% BSA
Concentration	1 mg/ml
Storage instruction	For continuous use, store undiluted antibody at 2-8°C for up to a week. For long-term storage, aliquot and store at -20°C. Storage in frost free freezers is not recommended. Avoid repeated freeze/thaw cycles. Suggest spin the vial prior to opening. The antibody solution should be gently mixed before use.

Note For laboratory research only, not for drug, diagnostic or other use.

## Bioinformation

Gene Symbol	LAT
Gene Full Name	linker for activation of T cells
Background	The protein encoded by this gene is phosphorylated by ZAP-70/Syk protein tyrosine kinases following activation of the T-cell antigen receptor (TCR) signal transduction pathway. This transmembrane protein localizes to lipid rafts and acts as a docking site for SH2 domain-containing proteins. Upon phosphorylation, this protein recruits multiple adaptor proteins and downstream signaling molecules into multimolecular signaling complexes located near the site of TCR engagement. Alternative splicing results in multiple transcript variants encoding different isoforms. [provided by RefSeq, Jul 2008]
Function	Required for TCR (T-cell antigen receptor)- and pre-TCR-mediated signaling, both in mature T-cells and during their development. Involved in FCGR3 (low affinity immunoglobulin gamma Fc region receptor III)-mediated signaling in natural killer cells and FCER1 (high affinity immunoglobulin epsilon receptor)-mediated signaling in mast cells. Couples activation of these receptors and their associated kinases with distal intracellular events such as mobilization of intracellular calcium stores, PKC activation, MAPK activation or cytoskeletal reorganization through the recruitment of PLCG1, GRB2, GRAP2, and other signaling molecules. [UniProt]
Calculated Mw	28 kDa
PTM	Phosphorylated on tyrosines by ZAP70 upon TCR activation, or by SYK upon other immunoreceptor activation; which leads to the recruitment of multiple signaling molecules. Is one of the most prominently tyrosine-phosphorylated proteins detected following TCR engagement. May be dephosphorylated by PTPRJ. Phosphorylated by ITK leading to the recruitment of VAV1 to LAT-containing complexes.  Palmitoylation of Cys-26 and Cys-29 is required for raft targeting and efficient phosphorylation. [UniProt]
Cellular Localization	Cell membrane; Single-pass type III membrane protein. Note=Present in lipid rafts. [UniProt]

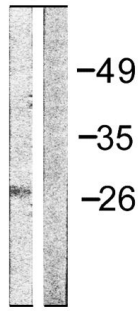
## Images



ARG66637 anti-LAT phospho (Tyr200) antibody IHC-P image

Immunohistochemistry: Paraffin-embedded Human colon carcinoma tissue stained with ARG66637 anti-LAT phospho (Tyr200) antibody. The picture on the right is blocked with the phospho peptide.

NIH/3T3



- + Phosphopeptide

### ARG66637 anti-LAT phospho (Tyr200) antibody WB image

Western blot: NIH/3T3 cell lysate stained with ARG66637 anti-LAT phospho (Tyr200) antibody. The lane on the right is blocked with the phosphopeptide.