

## ARG66643 anti-hCG alpha antibody [SQab19162]

Package: 100 µl

Store at: -20°C

### Summary

|                     |   |
|---------------------|---|
| Product Description | Recombinant Rabbit Monoclonal antibody [SQab19162] recognizes hCG alpha   |
| Tested Reactivity   | Hu  |
| Tested Application  | IHC-P   |
| Host                | Rabbit  |
| Clonality           | Monoclonal  |
| Clone               | SQab19162   |
| Isotype             | IgG   |
| Target Name         | hCG alpha   |
| Species             | Human   |
| Immunogen           | Synthetic peptide within aa. 1-100 of hCG.  |
| Conjugation         | Un-conjugated   |
| Alternate Names     | FSH-alpha; LSH-alpha; FSHA; Thyrotropin alpha chain; LHA; CG-alpha; GPHA1; TSHA; Chorionic gonadotrophin subunit alpha; Luteinizing hormone alpha chain; TSH-alpha; Choriogonadotropin alpha chain; GPHA; CG-ALPHA; Anterior pituitary glycoprotein hormones common subunit alpha; Follitropin alpha chain; HCG; Glycoprotein hormones alpha chain; Thyroid-stimulating hormone alpha chain; Follicle-stimulating hormone alpha chain; Lutropin alpha chain |

### Application Instructions

|                   |  |               |
|-------------------|--|---------------|
| Application table | Application  | Dilution      |
|                   | IHC-P  | 1:100 - 1:200 |
| Application Note  | IHC-P: Antigen Retrieval: Heat mediation was performed in Tris/EDTA buffer (pH 9.0), primary antibody incubate at RT (18°C-25°C) for 30 minutes.<br>* The dilutions indicate recommended starting dilutions and the optimal dilutions or concentrations should be determined by the scientist. |               |

### Properties

|                     |   |
|---------------------|---|
| Form                | Liquid  |
| Purification        | Purification with Protein A.  |
| Buffer              | PBS, 0.01% Sodium azide, 40% Glycerol and 0.05% BSA.  |
| Preservative        | 0.01% Sodium azide  |
| Stabilizer          | 40% Glycerol and 0.05% BSA  |
| Storage instruction | For continuous use, store undiluted antibody at 2-8°C for up to a week. For long-term storage, aliquot and store at -20°C. Storage in frost free freezers is not recommended. Avoid repeated freeze/thaw cycles. Suggest spin the vial prior to opening. The antibody solution should be gently mixed before use. |

**Note**

For laboratory research only, not for drug, diagnostic or other use.

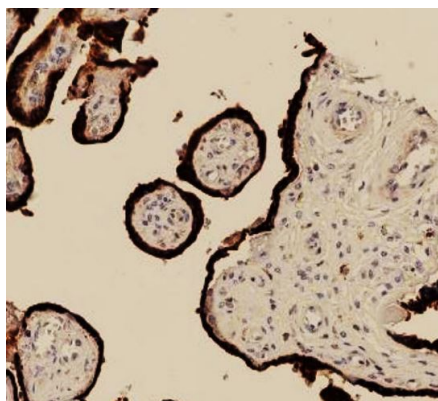
## Bioinformation

---

|                       |   |
|-----------------------|---|
| Gene Symbol           | CGA   |
| Gene Full Name        | glycoprotein hormones, alpha polypeptide  |
| Background            | The four human glycoprotein hormones chorionic gonadotropin (CG), luteinizing hormone (LH), follicle stimulating hormone (FSH), and thyroid stimulating hormone (TSH) are dimers consisting of alpha and beta subunits that are associated noncovalently. The alpha subunits of these hormones are identical, however, their beta chains are unique and confer biological specificity. The protein encoded by this gene is the alpha subunit and belongs to the glycoprotein hormones alpha chain family. Two transcript variants encoding different isoforms have been found for this gene. [provided by RefSeq, Nov 2011] |
| Calculated Mw         | 13 kDa  |
| Cellular Localization | Secreted. [UniProt]   |

## Images

---



ARG66643 anti-hCG alpha antibody [SQab19162] IHC-P image

Immunohistochemistry: Formalin/PFA-fixed and paraffin-embedded Human placenta tissue stained with ARG66643 anti-hCG alpha antibody [SQab19162]. Antigen Retrieval: Heat mediation was performed in Tris/EDTA buffer (pH 9.0).