

ARG66646 anti-MART1 / Melan A antibody [SQab19165]

Package: 100 µl
Store at: -20°C

Summary

Product Description	Recombinant Rabbit Monoclonal antibody [SQab19165] recognizes MART1 / Melan A
Tested Reactivity	Hu
Tested Application	IHC-P
Host	Rabbit
Clonality	Monoclonal
Clone	SQab19165
Isotype	IgG
Target Name	MART1 / Melan A
Species	Human
Immunogen	Synthetic peptide around the N-terminus of Human MART1 / Melan A.
Conjugation	Un-conjugated
Alternate Names	MART-1; MART1; Protein Melan-A; Antigen SK29-AA; Antigen LB39-AA; Melanoma antigen recognized by T-cells 1

Application Instructions

Application table	Application	Dilution
	IHC-P	1:100 - 1:200

Application Note
IHC-P: Antigen Retrieval: Heat mediation was performed in Tris/EDTA buffer (pH 9.0), primary antibody incubate at RT (18°C-25°C) for 30 minutes.
* The dilutions indicate recommended starting dilutions and the optimal dilutions or concentrations should be determined by the scientist.

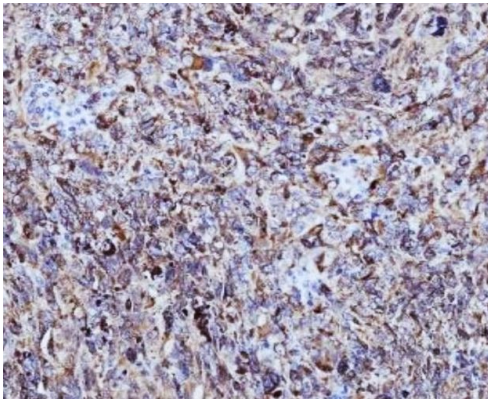
Properties

Form	Liquid
Purification	Purification with Protein A.
Buffer	PBS, 0.01% Sodium azide, 40% Glycerol and 0.05% BSA.
Preservative	0.01% Sodium azide
Stabilizer	40% Glycerol and 0.05% BSA
Storage instruction	For continuous use, store undiluted antibody at 2-8°C for up to a week. For long-term storage, aliquot and store at -20°C. Storage in frost free freezers is not recommended. Avoid repeated freeze/thaw cycles. Suggest spin the vial prior to opening. The antibody solution should be gently mixed before use.
Note	For laboratory research only, not for drug, diagnostic or other use.

Bioinformation

Gene Symbol	MLANA
Gene Full Name	melan-A
Function	Involved in melanosome biogenesis by ensuring the stability of GPR143. Plays a vital role in the expression, stability, trafficking, and processing of melanocyte protein PMEL, which is critical to the formation of stage II melanosomes. [UniProt]
Calculated Mw	13 kDa
PTM	Acylated. [UniProt]
Cellular Localization	Endoplasmic reticulum membrane; Single-pass type III membrane protein. Golgi apparatus. Golgi apparatus, trans-Golgi network membrane. Melanosome. Note=Also found in small vesicles and tubules dispersed over the entire cytoplasm. A small fraction of the protein is inserted into the membrane in an inverted orientation. Inversion of membrane topology results in the relocalization of the protein from a predominant Golgi/post-Golgi area to the endoplasmic reticulum. [UniProt]

Images



ARG66646 anti-MART1 / Melan A antibody [SQab19165] IHC-P image

Immunohistochemistry: Formalin/PFA-fixed and paraffin-embedded Human melanoma tissue stained with ARG66646 anti-MART1 / Melan A antibody [SQab19165]. Antigen Retrieval: Heat mediation was performed in Tris/EDTA buffer (pH 9.0).