

ARG66652 anti-DCT / TRP2 antibody

Package: 100 µg
Store at: -20°C

Summary

Product Description	Rabbit Polyclonal antibody recognizes DCT / TRP2
Tested Reactivity	Hu
Predict Reactivity	Ms, Rat
Tested Application	IHC-P, WB
Host	Rabbit
Clonality	Polyclonal
Isotype	IgG
Target Name	DCT / TRP2
Species	Human
Immunogen	Synthetic peptide corresponding to aa. 1268-1341 of Human DCT / TRP2.
Conjugation	Un-conjugated
Alternate Names	L-dopachrome tautomerase; TYRP2; Tyrosinase-related protein 2; L-dopachrome Delta-isomerase; EC 5.3.3.12; TRP2; DCT; DT; TRP-2

Application Instructions

Application table	Application	Dilution
	IHC-P	1:200 - 1:500
	WB	1:500 - 1:2000
Application Note	* The dilutions indicate recommended starting dilutions and the optimal dilutions or concentrations should be determined by the scientist.	
Observed Size	~ 70 kDa	

Properties

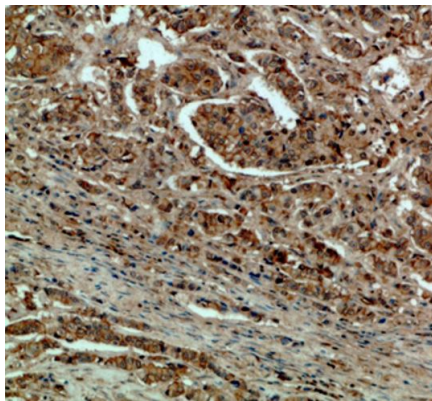
Form	Liquid
Purification	Affinity purification with immunogen.
Buffer	PBS (pH 7.4), 0.02% Sodium azide and 50% Glycerol.
Preservative	0.02% Sodium azide
Stabilizer	50% Glycerol
Concentration	1 mg/ml
Storage instruction	For continuous use, store undiluted antibody at 2-8°C for up to a week. For long-term storage, aliquot and store at -20°C. Storage in frost free freezers is not recommended. Avoid repeated freeze/thaw cycles. Suggest spin the vial prior to opening. The antibody solution should be gently mixed before use.

Note

For laboratory research only, not for drug, diagnostic or other use.

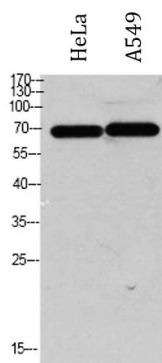
Bioinformation

Gene Symbol	DCT
Gene Full Name	dopachrome tautomerase
Function	Involved in regulating eumelanin and phaeomelanin levels. [UniProt]
Calculated Mw	Isoform 1: 59 kDa Isoform 2: 63 kDa
PTM	Glycosylated. [UniProt]
Cellular Localization	Melanosome membrane; Single-pass type I membrane protein. Melanosome. Note=Proper trafficking to melanosome is regulated by SGSM2, ANKRD27, RAB9A, RAB32 and RAB38. [UniProt]

Images

ARG66652 anti-DCT / TRP2 antibody IHC-P image

Immunohistochemistry: Paraffin-embedded Human breast cancer tissue stained with ARG66652 anti-DCT / TRP2 antibody at 1:200 dilution.



ARG66652 anti-DCT / TRP2 antibody WB image

Western blot: HeLa and A549 cell lysates stained with ARG66652 anti-DCT / TRP2 antibody at 1:1000 dilution.