

ARG66669 anti-SLC15A1 / PepT1 antibody

Package: 100 µg
Store at: -20°C

Summary

Product Description	Rabbit Polyclonal antibody recognizes SLC15A1 / PepT1
Tested Reactivity	Hu, Ms
Tested Application	WB
Host	Rabbit
Clonality	Polyclonal
Isotype	IgG
Target Name	SLC15A1 / PepT1
Species	Human
Immunogen	Synthetic peptide within aa. 200-280 of Human SLC15A1 / PepT1.
Conjugation	Un-conjugated
Alternate Names	Peptide transporter 1; Solute carrier family 15 member 1; Intestinal H; HPECT1; Oligopeptide transporter, small intestine isoform; HPEPT1; PEPT1

Application Instructions

Application table	Application	Dilution
	WB	1:500 - 1:2000
Application Note	* The dilutions indicate recommended starting dilutions and the optimal dilutions or concentrations should be determined by the scientist.	
Positive Control	HeLa	

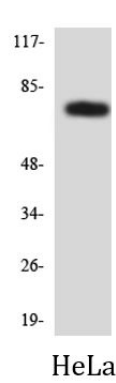
Properties

Form	Liquid
Purification	Affinity purification with immunogen.
Buffer	PBS, 0.02% Sodium azide, 50% Glycerol and 0.5% BSA.
Preservative	0.02% Sodium azide
Stabilizer	50% Glycerol and 0.5% BSA
Concentration	1 mg/ml
Storage instruction	For continuous use, store undiluted antibody at 2-8°C for up to a week. For long-term storage, aliquot and store at -20°C. Storage in frost free freezers is not recommended. Avoid repeated freeze/thaw cycles. Suggest spin the vial prior to opening. The antibody solution should be gently mixed before use.
Note	For laboratory research only, not for drug, diagnostic or other use.

Bioinformation

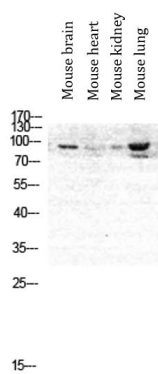
Gene Symbol	SLC15A1
Gene Full Name	solute carrier family 15 (oligopeptide transporter), member 1
Background	This gene encodes an intestinal hydrogen peptide cotransporter that is a member of the solute carrier family 15. The encoded protein is localized to the brush border membrane of the intestinal epithelium and mediates the uptake of di- and tripeptides from the lumen into the enterocytes. This protein plays an important role in the uptake and digestion of dietary proteins. This protein also facilitates the absorption of numerous peptidomimetic drugs. [provided by RefSeq, Apr 2010]
Function	Proton-coupled intake of oligopeptides of 2 to 4 amino acids with a preference for dipeptides. May constitute a major route for the absorption of protein digestion end-products. [UniProt]
Calculated Mw	79 kDa
Cellular Localization	Membrane; Multi-pass membrane protein. [UniProt]

Images



ARG66669 anti-SLC15A1 / PepT1 antibody WB image

Western blot: HeLa cell lysate stained with ARG66669 anti-SLC15A1 / PepT1 antibody.



ARG66669 anti-SLC15A1 / PepT1 antibody WB image

Western blot: Mouse brain, Mouse heart, Mouse kidney and Mouse lung lysates stained with ARG66669 anti-SLC15A1 / PepT1 antibody at 1:1000 dilution.