

## ARG66670 anti-RPS4Y1 antibody

Package: 100 µg  
Store at: -20°C

### Summary

Product Description	Rabbit Polyclonal antibody recognizes RPS4Y1
Tested Reactivity	Hu, Ms
Tested Application	ICC/IF, IHC-P, WB
Host	Rabbit
Clonality	Polyclonal
Isotype	IgG
Target Name	RPS4Y1
Species	Human
Immunogen	Synthetic peptide within aa. 190-270 of Human RPS4Y1.
Conjugation	Un-conjugated
Alternate Names	RPS4Y; 40S ribosomal protein S4, Y isoform 1; S4

### Application Instructions

Application table	Application	Dilution
	ICC/IF	1:200 - 1:1000
	IHC-P	1:100 - 1:300
	WB	1:500 - 1:2000
Application Note	IHC-P: Antigen Retrieval: High-pressure and temperature Tris-EDTA buffer (pH 8.0). * The dilutions indicate recommended starting dilutions and the optimal dilutions or concentrations should be determined by the scientist.	
Positive Control	HUVEC	
Observed Size	~ 30 kDa	

### Properties

Form	Liquid
Purification	Affinity purification with immunogen.
Buffer	PBS, 0.02% Sodium azide, 50% Glycerol and 0.5% BSA.
Preservative	0.02% Sodium azide
Stabilizer	50% Glycerol and 0.5% BSA
Concentration	1 mg/ml
Storage instruction	For continuous use, store undiluted antibody at 2-8°C for up to a week. For long-term storage, aliquot and store at -20°C. Storage in frost free freezers is not recommended. Avoid repeated freeze/thaw

cycles. Suggest spin the vial prior to opening. The antibody solution should be gently mixed before use.

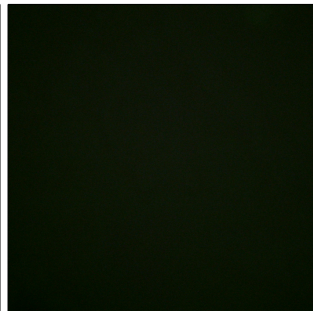
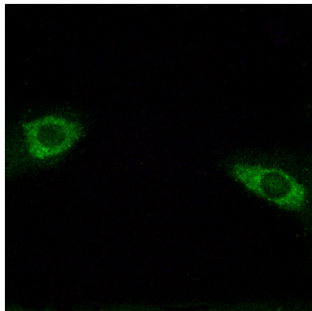
#### Note

For laboratory research only, not for drug, diagnostic or other use.

## Bioinformation

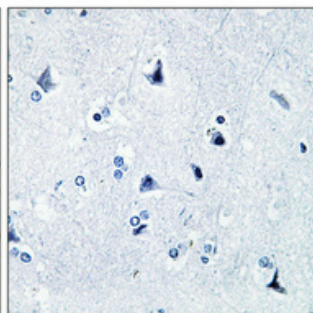
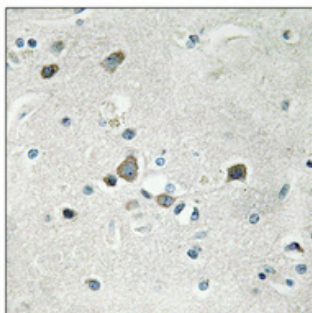
Gene Symbol	RPS4Y1
Gene Full Name	ribosomal protein S4, Y-linked 1
Background	Cytoplasmic ribosomes, organelles that catalyze protein synthesis, consist of a small 40S subunit and a large 60S subunit. Together these subunits are composed of 4 RNA species and approximately 80 structurally distinct proteins. This gene encodes ribosomal protein S4, a component of the 40S subunit. Ribosomal protein S4 is the only ribosomal protein known to be encoded by more than one gene, namely this gene and ribosomal protein S4, X-linked (RPS4X). The 2 isoforms encoded by these genes are not identical, but are functionally equivalent. Ribosomal protein S4 belongs to the S4E family of ribosomal proteins. It has been suggested that haploinsufficiency of the ribosomal protein S4 genes plays a role in Turner syndrome; however, this hypothesis is controversial. As is typical for genes encoding ribosomal proteins, there are multiple processed pseudogenes of this gene dispersed through the genome. [provided by RefSeq, Jul 2008]
Calculated Mw	29 kDa

## Images



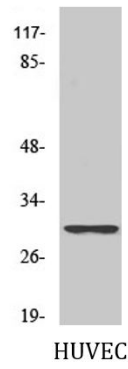
ARG66670 anti-RPS4Y1 antibody ICC/IF image

Immunofluorescence: HUVEC cells stained with ARG66670 anti-RPS4Y1 antibody. The picture on the right was blocked with the synthetic peptide.



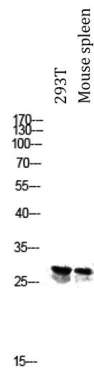
ARG66670 anti-RPS4Y1 antibody IHC-P image

Immunohistochemistry: Paraffin-embedded Human brain tissue. Antigen Retrieval: High-pressure and temperature Tris-EDTA buffer (pH 8.0). Tissue section was stained with ARG66670 anti-RPS4Y1 antibody at 1:100 dilution, overnight at 4°C. The picture on the right was blocked with the synthetic peptide.



ARG66670 anti-RPS4Y1 antibody WB image

Western blot: HUVEC cell lysate stained with ARG66670 anti-RPS4Y1 antibody at 1:1000 dilution.



ARG66670 anti-RPS4Y1 antibody WB image

Western blot: 293T and Mouse spleen lysates stained with ARG66670 anti-RPS4Y1 antibody at 1:1000 dilution.