

ARG66675 anti-LEF1 antibody [SQab19160]

Package: 50 µl
Store at: -20°C

Summary

Product Description	Recombinant Rabbit Monoclonal antibody [SQab19160] recognizes LEF1
Tested Reactivity	Hu
Tested Application	IHC-P, WB
Host	Rabbit
Clonality	Monoclonal
Clone	SQab19160
Isotype	IgG
Target Name	LEF1
Species	Human
Immunogen	Synthetic peptide within aa. 100-200 of Human LEF1.
Conjugation	Un-conjugated
Alternate Names	Lymphoid enhancer-binding factor 1; TCF1-alpha; TCF7L3; T cell-specific transcription factor 1-alpha; LEF-1; TCF1ALPHA; TCF10

Application Instructions

Application table	Application	Dilution
	IHC-P	1:100 - 1:200
	WB	1:500 - 1:2000
Application Note	IHC-P: Antigen Retrieval: Heat mediation was performed in Tris/EDTA buffer (pH 9.0), primary antibody incubate at RT (18°C-25°C) for 30 minutes. * The dilutions indicate recommended starting dilutions and the optimal dilutions or concentrations should be determined by the scientist.	
Observed Size	40, 44 kDa	

Properties

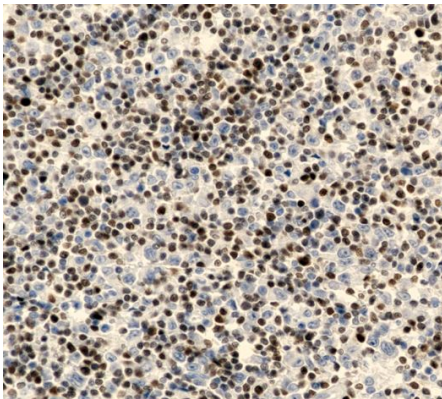
Form	Liquid
Purification	Purification with Protein A.
Buffer	PBS, 0.01% Sodium azide, 40% Glycerol and 0.05% BSA.
Preservative	0.01% Sodium azide
Stabilizer	40% Glycerol and 0.05% BSA
Storage instruction	For continuous use, store undiluted antibody at 2-8°C for up to a week. For long-term storage, aliquot and store at -20°C. Storage in frost free freezers is not recommended. Avoid repeated freeze/thaw cycles. Suggest spin the vial prior to opening. The antibody solution should be gently mixed before use.

Note For laboratory research only, not for drug, diagnostic or other use.

Bioinformation

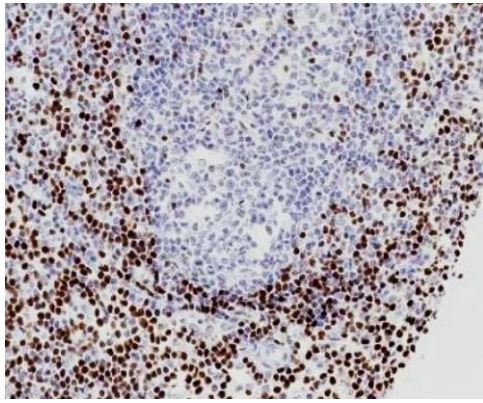
Gene Symbol	LEF1
Gene Full Name	lymphoid enhancer-binding factor 1
Background	This gene encodes a transcription factor belonging to a family of proteins that share homology with the high mobility group protein-1. The protein encoded by this gene can bind to a functionally important site in the T-cell receptor-alpha enhancer, thereby conferring maximal enhancer activity. This transcription factor is involved in the Wnt signaling pathway, and it may function in hair cell differentiation and follicle morphogenesis. Mutations in this gene have been found in somatic sebaceous tumors. This gene has also been linked to other cancers, including androgen-independent prostate cancer. Alternative splicing results in multiple transcript variants. [provided by RefSeq, Oct 2009]
Function	Participates in the Wnt signaling pathway. Activates transcription of target genes in the presence of CTNNB1 and EP300. May play a role in hair cell differentiation and follicle morphogenesis. TLE1, TLE2, TLE3 and TLE4 repress transactivation mediated by LEF1 and CTNNB1. Regulates T-cell receptor alpha enhancer function. Binds DNA in a sequence-specific manner. PIAG antagonizes both Wnt-dependent and Wnt-independent activation by LEF1 (By similarity). Isoform 3 lacks the CTNNB1 interaction domain and may be an antagonist for Wnt signaling. Isoform 5 transcriptionally activates the fibronectin promoter, binds to and represses transcription from the E-cadherin promoter in a CTNNB1-independent manner, and is involved in reducing cellular aggregation and increasing cell migration of pancreatic cancer cells. Isoform 1 transcriptionally activates MYC and CCND1 expression and enhances proliferation of pancreatic tumor cells. [UniProt]
Calculated Mw	44 kDa
PTM	Phosphorylated at Thr-155 and/or Ser-166 by NLK. Phosphorylation by NLK at these sites represses LEF1-mediated transcriptional activation of target genes of the canonical Wnt signaling pathway. [UniProt]
Cellular Localization	Nucleus. Note=Found in nuclear bodies upon PIASG binding. [UniProt]

Images



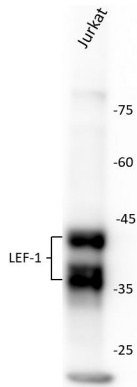
ARG66675 anti-LEF1 antibody [SQab19160] IHC-P image

Immunohistochemistry: Paraffin-embedded Human Hodgkin's lymphoma tissue stained with ARG66675 anti-LEF1 antibody [SQab19160].



ARG66675 anti-LEF1 antibody [SQab19160] IHC-P image

Immunohistochemistry: Formalin/PFA-fixed and paraffin-embedded Human tonsil tissue stained with ARG66675 anti-LEF1 antibody [SQab19160]. Antigen Retrieval: Heat mediation was performed in Tris/EDTA buffer (pH 9.0).



ARG66675 anti-LEF1 antibody [SQab19160] WB image (Customer review)

Western blot: Jurkat stained with ARG66675 anti-LEF1 antibody [SQab19160] at 1:500 dilution.