

ARG66689 anti-RRAD antibody

Package: 100 µg
Store at: -20°C

Summary

Product Description	Rabbit Polyclonal antibody recognizes RRAD
Tested Reactivity	Hu
Tested Application	ICC/IF, IHC-P, WB
Host	Rabbit
Clonality	Polyclonal
Isotype	IgG
Target Name	RRAD
Species	Human
Immunogen	Synthetic peptide within aa. 10-90 of Human RRAD.
Conjugation	Un-conjugated
Alternate Names	RAD; REM3; GTP-binding protein RAD; RAD1; Ras associated with diabetes

Application Instructions

Application table	Application	Dilution
	ICC/IF	1:200 - 1:1000
	IHC-P	1:100 - 1:300
	WB	1:500 - 1:2000
Application Note	* The dilutions indicate recommended starting dilutions and the optimal dilutions or concentrations should be determined by the scientist.	
Positive Control	HeLa	
Observed Size	~ 33 kDa	

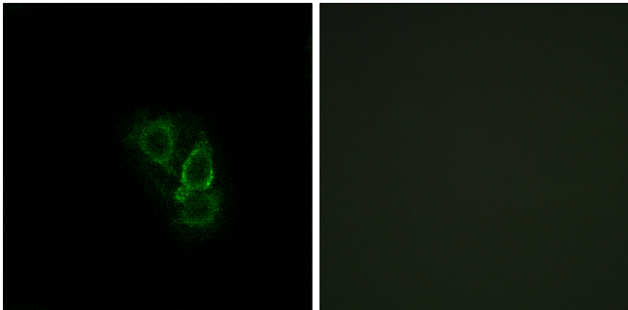
Properties

Form	Liquid
Purification	Affinity purification with immunogen.
Buffer	PBS, 0.02% Sodium azide, 50% Glycerol and 0.5% BSA.
Preservative	0.02% Sodium azide
Stabilizer	50% Glycerol and 0.5% BSA
Concentration	1 mg/ml
Storage instruction	For continuous use, store undiluted antibody at 2-8°C for up to a week. For long-term storage, aliquot and store at -20°C. Storage in frost free freezers is not recommended. Avoid repeated freeze/thaw cycles. Suggest spin the vial prior to opening. The antibody solution should be gently mixed before use.

Bioinformation

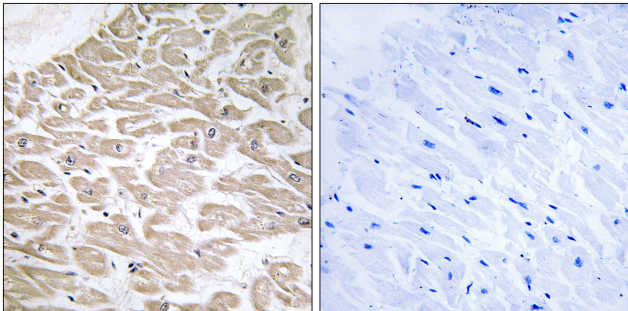
Gene Symbol	RRAD
Gene Full Name	Ras-related associated with diabetes
Function	May play an important role in cardiac antiarrhythmia via the strong suppression of voltage-gated L-type Ca(2+) currents. Regulates voltage-dependent L-type calcium channel subunit alpha-1C trafficking to the cell membrane (By similarity). Inhibits cardiac hypertrophy through the calmodulin-dependent kinase II (CaMKII) pathway. Inhibits phosphorylation and activation of CAMK2D. [UniProt]
Calculated Mw	33 kDa
Cellular Localization	Cell membrane. [UniProt]

Images



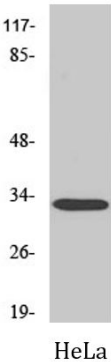
ARG66689 anti-RRAD antibody ICC/IF image

Immunofluorescence: A549 cells stained with ARG66689 anti-RRAD antibody (green). The picture on the right is blocked with the synthetic peptide.



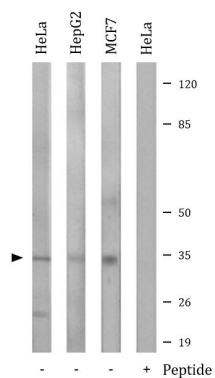
ARG66689 anti-RRAD antibody IHC-P image

Immunohistochemistry: Paraffin-embedded Human heart tissue stained with ARG66689 anti-RRAD antibody. The picture on the right is blocked with the synthetic peptide.



ARG66689 anti-RRAD antibody WB image

Western blot: HeLa cell lysate stained with ARG66689 anti-RRAD antibody.



ARG66689 anti-RRAD antibody WB image

Western blot: HeLa, HepG2 and MCF7 cell lysates stained with ARG66689 anti-RRAD antibody. The lane on the right is blocked with the synthetic peptide.