

ARG66692 anti-CPI-17 phospho (Thr38) antibody

Package: 100 µg
Store at: -20°C

Summary

Product Description	Rabbit Polyclonal antibody recognizes CPI-17 phospho (Thr38)
Tested Reactivity	Hu, Ms
Predict Reactivity	Rat
Tested Application	IHC-P, WB
Host	Rabbit
Clonality	Polyclonal
Isotype	IgG
Target Name	CPI-17
Species	Human
Immunogen	Phosphospecific peptide around Thr38 of Human CPI-17.
Conjugation	Un-conjugated
Alternate Names	CPI-17; Protein kinase C-potentiated inhibitor protein of 17 kDa; CPI17; 17 kDa PKC-potentiated inhibitory protein of PP1; PPP1INL; Protein phosphatase 1 regulatory subunit 14A

Application Instructions

Application table	Application	Dilution
	IHC-P	1:100 - 1:300
	WB	1:500 - 1:2000
Application Note	* The dilutions indicate recommended starting dilutions and the optimal dilutions or concentrations should be determined by the scientist.	
Positive Control	RAW264.7	
Observed Size	~ 20 kDa	

Properties

Form	Liquid
Purification	Affinity purification with immunogen.
Buffer	PBS, 0.02% Sodium azide, 50% Glycerol and 0.5% BSA.
Preservative	0.02% Sodium azide
Stabilizer	50% Glycerol and 0.5% BSA
Concentration	1 mg/ml
Storage instruction	For continuous use, store undiluted antibody at 2-8°C for up to a week. For long-term storage, aliquot and store at -20°C. Storage in frost free freezers is not recommended. Avoid repeated freeze/thaw

cycles. Suggest spin the vial prior to opening. The antibody solution should be gently mixed before use.

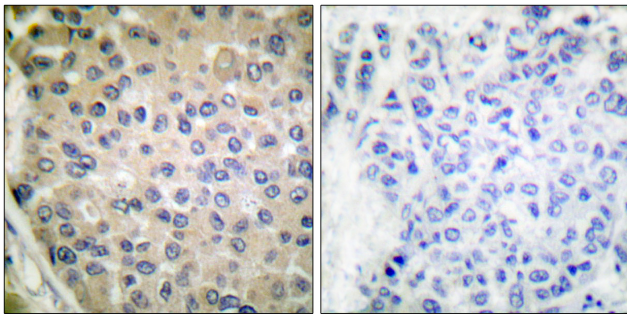
Note

For laboratory research only, not for drug, diagnostic or other use.

Bioinformation

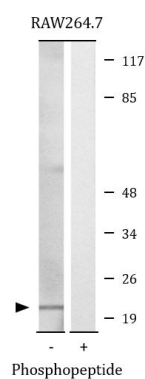
Gene Symbol	PPP1R14A
Gene Full Name	protein phosphatase 1, regulatory (inhibitor) subunit 14A
Background	The protein encoded by this gene belongs to the protein phosphatase 1 (PP1) inhibitor family. This protein is an inhibitor of smooth muscle myosin phosphatase, and has higher inhibitory activity when phosphorylated. Inhibition of myosin phosphatase leads to increased myosin phosphorylation and enhanced smooth muscle contraction. Alternatively spliced transcript variants encoding different isoforms have been noted for this gene. [provided by RefSeq, Sep 2011]
Function	Inhibitor of PPP1CA. Has over 1000-fold higher inhibitory activity when phosphorylated, creating a molecular switch for regulating the phosphorylation status of PPP1CA substrates and smooth muscle contraction. [UniProt]
Calculated Mw	17 kDa
Cellular Localization	Cytoplasm. [UniProt]

Images



ARG66692 anti-CPI-17 phospho (Thr38) antibody IHC-P image

Immunohistochemistry: Paraffin-embedded Human breast carcinoma tissue stained with ARG66692 anti-CPI-17 phospho (Thr38) antibody. The picture on the right is blocked with the phosphopeptide.



ARG66692 anti-CPI-17 phospho (Thr38) antibody WB image

Western blot: RAW264.7 cell lysates stained with ARG66692 anti-CPI-17 phospho (Thr38) antibody. The lane on the right is blocked with the phosphopeptide.