

ARG66696
anti-SOS2 antibodyPackage: 100 µl
Store at: -20°C

Summary

Product Description	Rabbit Polyclonal antibody recognizes SOS2
Tested Reactivity	Hu, Ms, Rat
Tested Application	WB
Host	Rabbit
Clonality	Polyclonal
Isotype	IgG
Target Name	SOS2
Species	Human
Immunogen	KLH-conjugated synthetic peptide around the center region of Human SOS2.
Conjugation	Un-conjugated
Alternate Names	Son of sevenless homolog 2; SOS-2

Application Instructions

Application table	Application	Dilution
	WB	1:500 - 1:1000
Application Note	* The dilutions indicate recommended starting dilutions and the optimal dilutions or concentrations should be determined by the scientist.	
Observed Size	~ 160 kDa	

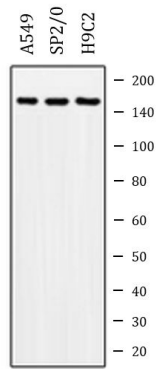
Properties

Form	Liquid
Purification	Affinity purification with immunogen.
Buffer	0.42% Potassium phosphate (pH 7.3), 0.87% NaCl, 0.01% Sodium azide and 30% Glycerol.
Preservative	0.01% Sodium azide
Stabilizer	30% Glycerol
Storage instruction	For continuous use, store undiluted antibody at 2-8°C for up to a week. For long-term storage, aliquot and store at -20°C. Storage in frost free freezers is not recommended. Avoid repeated freeze/thaw cycles. Suggest spin the vial prior to opening. The antibody solution should be gently mixed before use.
Note	For laboratory research only, not for drug, diagnostic or other use.

Bioinformation

Gene Symbol	SOS2
Gene Full Name	son of sevenless homolog 2 (Drosophila)
Function	Promotes the exchange of Ras-bound GDP by GTP. [UniProt]
Calculated Mw	153 kDa

Images



ARG66696 anti-SOS2 antibody WB image

Western blot: A549, SP2/O and H9C2 whole cell lysates stained with ARG66696 anti-SOS2 antibody.