

ARG66703 anti-IL6R alpha antibody

Package: 100 µg
Store at: -20°C

Summary

Product Description	Rabbit Polyclonal antibody recognizes IL6R alpha
Tested Reactivity	Hu
Tested Application	IHC-P
Host	Rabbit
Clonality	Polyclonal
Isotype	IgG
Target Name	IL6R alpha
Species	Human
Immunogen	Synthetic peptide around the internal region of Human IL6R alpha.
Conjugation	Un-conjugated
Alternate Names	IL-6R-alpha; CD126; IL6RA; IL-6 receptor subunit alpha; IL-6R subunit alpha; IL6Q; CD antigen CD126; IL-6R 1; IL-6RA; gp80; IL6RQ; Interleukin-6 receptor subunit alpha; IL-6R-1; Membrane glycoprotein 80

Application Instructions

Application table	Application	Dilution
	IHC-P	1:100 - 1:300

Application Note IHC-P: Antigen Retrieval: EDTA buffer (pH 8.0) at high pressure and temperature.
* The dilutions indicate recommended starting dilutions and the optimal dilutions or concentrations should be determined by the scientist.

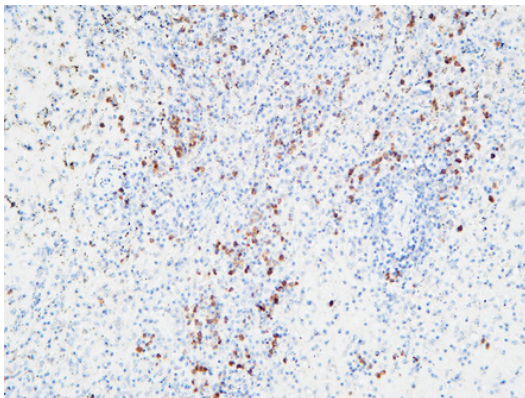
Properties

Form	Liquid
Purification	Affinity purification with immunogen.
Buffer	PBS, 0.02% Sodium azide, 50% Glycerol and 0.5% BSA.
Preservative	0.02% Sodium azide
Stabilizer	50% Glycerol and 0.5% BSA
Concentration	1 mg/ml
Storage instruction	For continuous use, store undiluted antibody at 2-8°C for up to a week. For long-term storage, aliquot and store at -20°C. Storage in frost free freezers is not recommended. Avoid repeated freeze/thaw cycles. Suggest spin the vial prior to opening. The antibody solution should be gently mixed before use.
Note	For laboratory research only, not for drug, diagnostic or other use.

Bioinformation

Gene Symbol	IL6R
Gene Full Name	interleukin 6 receptor
Background	<p>This gene encodes a subunit of the interleukin 6 (IL6) receptor complex. Interleukin 6 is a potent pleiotropic cytokine that regulates cell growth and differentiation and plays an important role in the immune response. The IL6 receptor is a protein complex consisting of this protein and interleukin 6 signal transducer (IL6ST/GP130/IL6-beta), a receptor subunit also shared by many other cytokines. Dysregulated production of IL6 and this receptor are implicated in the pathogenesis of many diseases, such as multiple myeloma, autoimmune diseases and prostate cancer. Alternatively spliced transcript variants encoding distinct isoforms have been reported. A pseudogene of this gene is found on chromosome 9.[provided by RefSeq, May 2011]</p>
Function	<p>Part of the receptor for interleukin 6. Binds to IL6 with low affinity, but does not transduce a signal. Signal activation necessitate an association with IL6ST. Activation may lead to the regulation of the immune response, acute-phase reactions and hematopoiesis.</p> <p>Low concentration of a soluble form of IL6 receptor acts as an agonist of IL6 activity. [UniProt]</p>
Calculated Mw	52 kDa
PTM	A short soluble form may also be released from the membrane by proteolysis. [UniProt]
Cellular Localization	Isoform 1: Basolateral cell membrane; Single-pass type I membrane protein. Isoform 2: Secreted. [UniProt]

Images



ARG66703 anti-IL6R alpha antibody IHC-P image

Immunohistochemistry: Paraffin-embedded Human spleen tissue. Antigen Retrieval: EDTA buffer (pH 8.0) at high pressure and temperature. The tissue section was stained with ARG66703 anti-IL6R alpha antibody at 1:200 dilution, overnight at 4°C.