

ARG66710 anti-ABCA1 antibody

Package: 100 µl
Store at: -20°C

Summary

Product Description	Rabbit Polyclonal antibody recognizes ABCA1
Tested Reactivity	Hu, Ms, Rat
Tested Application	WB
Host	Rabbit
Clonality	Polyclonal
Isotype	IgG
Target Name	ABCA1
Species	Human
Immunogen	KLH-conjugated synthetic peptide within the center region of Human ABCA1.
Conjugation	Un-conjugated
Alternate Names	TGD; Cholesterol efflux regulatory protein; HDLDT1; ATP-binding cassette sub-family A member 1; ATP-binding cassette 1; ATP-binding cassette transporter 1; ABC-1; ABC1; CERP

Application Instructions

Application table	<table> <tr> <th>Application</th><th>Dilution</th></tr> <tr> <td>WB</td><td>1:500 - 1:1000</td></tr> </table>	Application	Dilution	WB	1:500 - 1:1000
Application	Dilution				
WB	1:500 - 1:1000				
Application Note	* The dilutions indicate recommended starting dilutions and the optimal dilutions or concentrations should be determined by the scientist.				
Observed Size	~ 254 kDa				

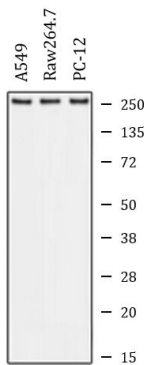
Properties

Form	Liquid
Purification	Affinity purification with immunogen.
Buffer	0.42% Potassium phosphate (pH 7.3), 0.87% NaCl, 0.01% Sodium azide and 30% Glycerol.
Preservative	0.01% Sodium azide
Stabilizer	30% Glycerol
Storage instruction	For continuous use, store undiluted antibody at 2-8°C for up to a week. For long-term storage, aliquot and store at -20°C. Storage in frost free freezers is not recommended. Avoid repeated freeze/thaw cycles. Suggest spin the vial prior to opening. The antibody solution should be gently mixed before use.
Note	For laboratory research only, not for drug, diagnostic or other use.

Bioinformation

Gene Symbol	ABCA1
Gene Full Name	ATP-binding cassette, sub-family A (ABC1), member 1
Background	The membrane-associated protein encoded by this gene is a member of the superfamily of ATP-binding cassette (ABC) transporters. ABC proteins transport various molecules across extra- and intracellular membranes. ABC genes are divided into seven distinct subfamilies (ABC1, MDR/TAP, MRP, ALD, OABP, GCN20, White). This protein is a member of the ABC1 subfamily. Members of the ABC1 subfamily comprise the only major ABC subfamily found exclusively in multicellular eukaryotes. With cholesterol as its substrate, this protein functions as a cholesterol efflux pump in the cellular lipid removal pathway. Mutations in this gene have been associated with Tangier's disease and familial high-density lipoprotein deficiency. [provided by RefSeq, Jul 2008]
Function	cAMP-dependent and sulfonylurea-sensitive anion transporter. Key gatekeeper influencing intracellular cholesterol transport. [UniProt]
Calculated Mw	254 kDa
PTM	Phosphorylation on Ser-2054 regulates phospholipid efflux. Palmitoylation by DHHC8 is essential for membrane localization. [UniProt]
Cellular Localization	Membrane; Multi-pass membrane protein. [UniProt]

Images



ARG66710 anti-ABCA1 antibody WB image

Western blot: A549, Raw264.7 and PC-12 whole cell lysates stained with ARG66710 anti-ABCA1 antibody.