

**ARG66718**  
**anti-ZNF608 antibody**Package: 100 µg  
Store at: -20°C

### Summary

Product Description	Rabbit Polyclonal antibody recognizes ZNF608
Tested Reactivity	Hu
Tested Application	IHC-P, WB
Host	Rabbit
Clonality	Polyclonal
Isotype	IgG
Target Name	ZNF608
Species	Human
Immunogen	Synthetic peptide corresponding to aa. 1231-1280 of Human ZNF608.
Conjugation	Un-conjugated
Alternate Names	Renal carcinoma antigen NY-REN-36; NY-REN-36; Zinc finger protein 608

### Application Instructions

Application table	Application	Dilution
	IHC-P	1:100 - 1:300
	WB	1:500 - 1:2000
Application Note	* The dilutions indicate recommended starting dilutions and the optimal dilutions or concentrations should be determined by the scientist.	
Positive Control	HeLa	
Observed Size	~ 160 kDa	

### Properties

Form	Liquid
Purification	Affinity purification with immunogen.
Buffer	PBS, 0.02% Sodium azide, 50% Glycerol and 0.5% BSA.
Preservative	0.02% Sodium azide
Stabilizer	50% Glycerol and 0.5% BSA
Concentration	1 mg/ml
Storage instruction	For continuous use, store undiluted antibody at 2-8°C for up to a week. For long-term storage, aliquot and store at -20°C. Storage in frost free freezers is not recommended. Avoid repeated freeze/thaw cycles. Suggest spin the vial prior to opening. The antibody solution should be gently mixed before use.

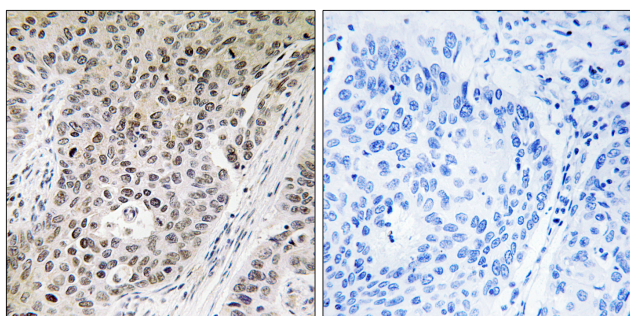
**Note**

For laboratory research only, not for drug, diagnostic or other use.

## Bioinformation

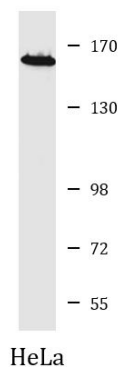
Gene Symbol	ZNF608
Gene Full Name	zinc finger protein 608
Function	Transcription factor, which represses ZNF609 transcription. [UniProt]
Calculated Mw	162 kDa

## Images



ARG66718 anti-ZNF608 antibody IHC-P image

Immunohistochemistry: Paraffin-embedded Human lung carcinoma tissue stained with ARG66718 anti-ZNF608 antibody. The picture on the right is blocked with the synthetic peptide.



ARG66718 anti-ZNF608 antibody WB image

Western blot: HeLa cell lysate stained with ARG66718 anti-ZNF608 antibody at 1:500 dilution.