

## ARG66725 anti-SH3GL1 / EEN antibody

Package: 100 µl  
Store at: -20°C

### Summary

|                     |   |
|---------------------|---|
| Product Description | Rabbit Polyclonal antibody recognizes SH3GL1 / EEN  |
| Tested Reactivity   | Hu, Ms, Mk  |
| Tested Application  | WB  |
| Host                | Rabbit  |
| Clonality           | Polyclonal  |
| Isotype             | IgG   |
| Target Name         | SH3GL1 / EEN  |
| Species             | Human   |
| Immunogen           | Recombinant full length protein of Human SH3GL1 / EEN.  |
| Conjugation         | Un-conjugated   |
| Alternate Names     | SH3P8; Extra eleven-nineteen leukemia fusion gene protein; Endophilin-A2; CNSA1; EEN; SH3 domain protein 2B; Endophilin-2; EEN fusion partner of MLL; SH3D2B; SH3 domain-containing GRB2-like protein 1 |

### Application Instructions

| Application table | Application  | Dilution       |
|-------------------|--|----------------|
|                   | WB   | 1:500 - 1:2000 |
| Application Note  | * The dilutions indicate recommended starting dilutions and the optimal dilutions or concentrations should be determined by the scientist. |                |
| Positive Control  | HepG2, MCF7, COS7 and Mouse brain  |                |
| Observed Size     | ~ 42 kDa   |                |

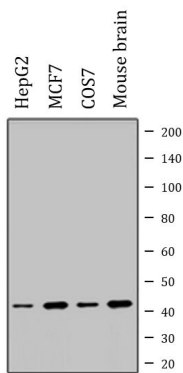
### Properties

|                     |   |
|---------------------|---|
| Form                | Liquid  |
| Purification        | Affinity purification with immunogen.   |
| Buffer              | 0.42% Potassium phosphate (pH 7.3), 0.87% NaCl, 0.01% Sodium azide and 30% Glycerol.  |
| Preservative        | 0.01% Sodium azide  |
| Stabilizer          | 30% Glycerol  |
| Storage instruction | For continuous use, store undiluted antibody at 2-8°C for up to a week. For long-term storage, aliquot and store at -20°C. Storage in frost free freezers is not recommended. Avoid repeated freeze/thaw cycles. Suggest spin the vial prior to opening. The antibody solution should be gently mixed before use. |
| Note                | For laboratory research only, not for drug, diagnostic or other use.  |

Bioinformation

|                       |   |
|-----------------------|---|
| Gene Symbol           | SH3GL1  |
| Gene Full Name        | SH3-domain GRB2-like 1  |
| Background            | <p>This gene encodes a member of the endophilin family of Src homology 3 domain-containing proteins. The encoded protein is involved in endocytosis and may also play a role in the cell cycle. Overexpression of this gene may play a role in leukemogenesis, and the encoded protein has been implicated in acute myeloid leukemia as a fusion partner of the myeloid-lymphoid leukemia protein. Pseudogenes of this gene are located on the long arm of chromosomes 11 and 17. Alternatively spliced transcript variants encoding multiple isoforms have been observed for this gene. [provided by RefSeq, Jan 2011]</p> |
| Function              | <p>Implicated in endocytosis. May recruit other proteins to membranes with high curvature (By similarity). [UniProt]</p>  |
| Calculated Mw         | 41 kDa  |
| Cellular Localization | <p>Cytoplasm. Early endosome membrane; Peripheral membrane protein. Cell projection, podosome. Note=Associated with postsynaptic endosomes in hippocampal neurons. [UniProt]</p>  |

Images



ARG66725 anti-SH3GL1 / EEN antibody WB image

Western blot: HepG2, MCF7, COS7 and Mouse brain whole cell lysates stained with ARG66725 anti-SH3GL1 / EEN antibody.