

## ARG66759 anti-CD2 antibody [SQab20192]

Package: 100 µl  
Store at: -20°C

### Summary

Product Description	Recombinant Rabbit Monoclonal antibody [SQab20192] recognizes CD2
Tested Reactivity	Hu
Tested Application	IHC-P, WB
Host	Rabbit
Clonality	Monoclonal
Clone	SQab20192
Isotype	IgG
Target Name	CD2
Species	Human
Immunogen	Synthetic peptide around the N-terminus of Human CD2.
Conjugation	Un-conjugated
Alternate Names	T-cell surface antigen T11/Leu-5; LFA-3 receptor; T-cell surface antigen CD2; SRBC; Erythrocyte receptor; CD antigen CD2; T11; Rosette receptor; LFA-2

### Application Instructions

Application table	Application	Dilution
	IHC-P	1:100 - 1:200
	WB	1:1000
Application Note	IHC-P: Antigen Retrieval: Heat mediation was performed in Tris/EDTA buffer (pH 9.0). * The dilutions indicate recommended starting dilutions and the optimal dilutions or concentrations should be determined by the scientist.	
Positive Control	WB: Jurkat IHC-P: T-cell lymphoma tissue	
Observed Size	43 ~ 47 kDa	

### Properties

Form	Liquid
Purification	Purification with Protein A.
Buffer	PBS, 0.01% Sodium azide, 40% Glycerol and 0.05% BSA.
Preservative	0.01% Sodium azide
Stabilizer	40% Glycerol and 0.05% BSA
Storage instruction	For continuous use, store undiluted antibody at 2-8°C for up to a week. For long-term storage, aliquot and store at -20°C. Storage in frost free freezers is not recommended. Avoid repeated freeze/thaw

cycles. Suggest spin the vial prior to opening. The antibody solution should be gently mixed before use.

**Note**

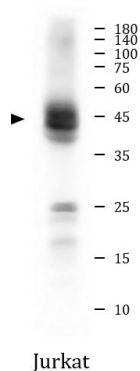
For laboratory research only, not for drug, diagnostic or other use.

## Bioinformation

---

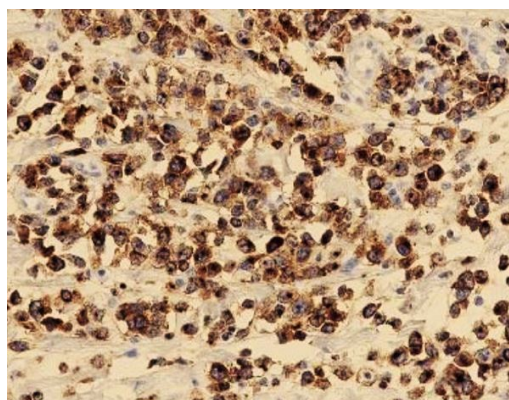
Gene Symbol	CD2
Gene Full Name	CD2 molecule
Background	The protein encoded by this gene is a surface antigen found on all peripheral blood T-cells. The encoded protein interacts with LFA3 (CD58) on antigen presenting cells to optimize immune recognition. A locus control region (LCR) has been found in the 3' flanking sequence of this gene. [provided by RefSeq, Jun 2016]
Function	CD2 interacts with lymphocyte function-associated antigen CD58 (LFA-3) and CD48/BCM1 to mediate adhesion between T-cells and other cell types. CD2 is implicated in the triggering of T-cells, the cytoplasmic domain is implicated in the signaling function. [UniProt]
Calculated Mw	39 kDa
Cellular Localization	Cell membrane; Single-pass type I membrane protein. [UniProt]

## Images



ARG66759 anti-CD2 antibody [SQab20192] WB image (Customer's Feedback)

Western blot: 10 µg of Jurkat cell lysate stained with ARG66759 anti-CD2 antibody [SQab20192] at 1:1000 dilution.



ARG66759 anti-CD2 antibody [SQab20192] IHC-P image

Immunohistochemistry: Formalin/PFA-fixed and paraffin-embedded Human T-cell lymphoma tissue. Antigen Retrieval: Heat mediation was performed in Tris/EDTA buffer (pH 9.0). The tissue section was stained with ARG66759 anti-CD2 antibody [SQab20192] at 18°C - 25°C for 30 minutes.