

ARG66771 anti-Calcitonin antibody [SQab20204]

Package: 100 µl
Store at: -20°C

Summary

Product Description	Recombinant Rabbit Monoclonal antibody [SQab20204] recognizes Calcitonin
Tested Reactivity	Hu
Tested Application	IHC-P
Host	Rabbit
Clonality	Monoclonal
Clone	SQab20204
Isotype	IgG
Target Name	Calcitonin
Species	Human
Immunogen	Synthetic peptide corresponding to residues in Human Calcitonin.
Conjugation	Un-conjugated
Alternate Names	CALC1; Calcitonin carboxyl-terminal peptide; CCP; PDN-21; CT

Application Instructions

Application table	Application	Dilution
	IHC-P	1:100 - 1:200
Application Note	IHC-P: Antigen Retrieval: Heat mediation was performed in Tris/EDTA buffer (pH 9.0). * The dilutions indicate recommended starting dilutions and the optimal dilutions or concentrations should be determined by the scientist.	
Positive Control	Medullary thyroid carcinoma.	

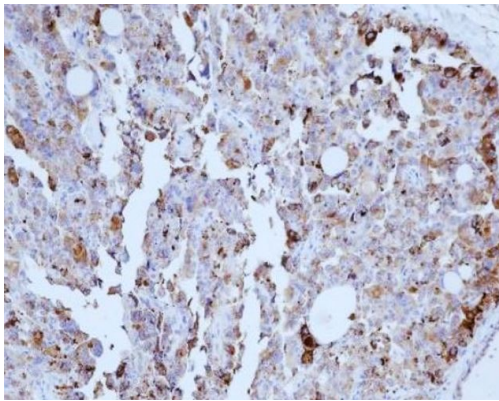
Properties

Form	Liquid
Purification	Purification with Protein A.
Buffer	PBS, 0.01% Sodium azide, 40% Glycerol and 0.05% BSA.
Preservative	0.01% Sodium azide
Stabilizer	40% Glycerol and 0.05% BSA
Storage instruction	For continuous use, store undiluted antibody at 2-8°C for up to a week. For long-term storage, aliquot and store at -20°C. Storage in frost free freezers is not recommended. Avoid repeated freeze/thaw cycles. Suggest spin the vial prior to opening. The antibody solution should be gently mixed before use.
Note	For laboratory research only, not for drug, diagnostic or other use.

Bioinformation

Gene Symbol	CALCA
Gene Full Name	Calcitonin
Background	This gene encodes the peptide hormones calcitonin, calcitonin gene-related peptide and katacalcin by tissue-specific alternative RNA splicing of the gene transcripts and cleavage of inactive precursor proteins. Calcitonin is involved in calcium regulation and acts to regulate phosphorus metabolism. Calcitonin gene-related peptide functions as a vasodilator and as an antimicrobial peptide while katacalcin is a calcium-lowering peptide. Multiple transcript variants encoding different isoforms have been found for this gene. [provided by RefSeq, Aug 2014]
Function	Calcitonin causes a rapid but short-lived drop in the level of calcium and phosphate in blood by promoting the incorporation of those ions in the bones. Katacalcin is a potent plasma calcium-lowering peptide. [UniProt]
Calculated Mw	14 kDa
Cellular Localization	Secreted. [UniProt]

Images



ARG66771 anti-Calcitonin antibody [SQab20204] IHC-P image

Immunohistochemistry: Formalin/PFA-fixed and paraffin-embedded Human medullary thyroid carcinoma tissue. Antigen Retrieval: Heat mediation was performed in Tris/EDTA buffer (pH 9.0). The tissue section was stained with ARG66771 anti-Calcitonin antibody [SQab20204] at 18°C - 25°C for 30 minutes.