

## ARG66779 anti-RAB38 antibody

Package: 100 µg  
Store at: -20°C

### Summary

|                     |  |
|---------------------|--|
| Product Description | Rabbit Polyclonal antibody recognizes RAB38                              |
| Tested Reactivity   | Hu   |
| Tested Application  | IHC-P, WB  |
| Host                | Rabbit   |
| Clonality           | Polyclonal   |
| Isotype             | IgG  |
| Target Name         | RAB38  |
| Species             | Human  |
| Immunogen           | Synthetic peptide between aa. 80-129 of Human RAB38.                     |
| Conjugation         | Un-conjugated  |
| Alternate Names     | Ras-related protein Rab-38; rrGTPbp; NY-MEL-1; Melanoma antigen NY-MEL-1 |

### Application Instructions

|                   |   |                |
|-------------------|---|----------------|
| Application table | Application   | Dilution       |
|                   | IHC-P   | 1:100          |
|                   | WB  | 1:500 - 1:2000 |
| Application Note  | IHC-P: Antigen Retrieval: Heat mediation.<br>* The dilutions indicate recommended starting dilutions and the optimal dilutions or concentrations should be determined by the scientist. |                |
| Positive Control  | Jurkat  |                |
| Observed Size     | ~ 26 kDa  |                |

### Properties

|                     |   |
|---------------------|---|
| Form                | Liquid  |
| Purification        | Affinity purification with immunogen.   |
| Buffer              | PBS, 0.02% Sodium azide, 50% Glycerol and 0.5% BSA.   |
| Preservative        | 0.02% Sodium azide  |
| Stabilizer          | 50% Glycerol and 0.5% BSA   |
| Concentration       | 1 mg/ml   |
| Storage instruction | For continuous use, store undiluted antibody at 2-8°C for up to a week. For long-term storage, aliquot and store at -20°C. Storage in frost free freezers is not recommended. Avoid repeated freeze/thaw cycles. Suggest spin the vial prior to opening. The antibody solution should be gently mixed before use. |

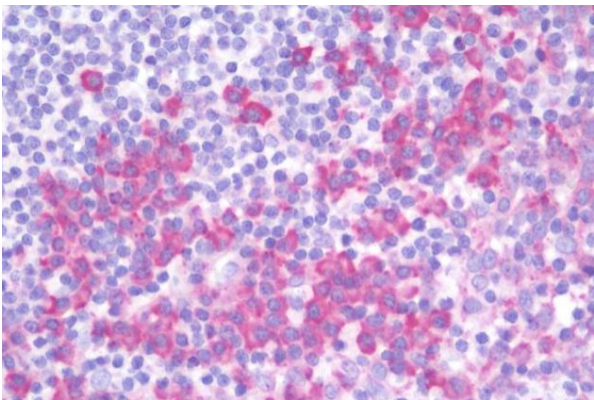
Note

For laboratory research only, not for drug, diagnostic or other use.

Bioinformation

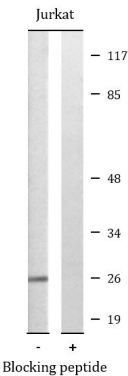
|                       |   |
|-----------------------|---|
| Gene Symbol           | RAB38   |
| Gene Full Name        | RAB38, member RAS oncogene family   |
| Function              | May be involved in melanosomal transport and docking. Involved in the proper sorting of TYRP1. Involved in peripheral melanosomal distribution of TYRP1 in melanocytes; the function, which probably is implicating vesicle-trafficking, includes cooperation with ANKRD27 and VAMP7 (By similarity). Plays a role in the maturation of phagosomes that engulf pathogens, such as S.aureus and M.tuberculosis (PubMed:21255211). Plays an important role in the control of melanin production and melanosome biogenesis (PubMed:23084991). In concert with RAB32, regulates the proper trafficking of melanogenic enzymes TYR, TYRP1 and DCT/TYRP2 to melanosomes in melanocytes (By similarity). [UniProt] |
| Calculated Mw         | 24 kDa  |
| PTM                   | Although at least one in vitro system can process and methylate the prenylated C-terminal, in an in vitro system that normally express Rab-38 and in vivo the prenylated C-terminal is not proteolytically processed and not methylated. [UniProt]  |
| Cellular Localization | Cell membrane; Lipid-anchor; Cytoplasmic side. Melanosome. Cytoplasmic vesicle, phagosome. Cytoplasmic vesicle, phagosome membrane; Lipid-anchor; Cytoplasmic side. Melanosome membrane. Note=Recruited to phagosomes containing S.aureus or M.tuberculosis (PubMed:21255211). The BLOC-3 complex, a heterodimer of HPS1 and HPS4 promotes its membrane localization (PubMed:23084991). [UniProt]   |

Images



ARG66779 anti-RAB38 antibody IHC-P image

Immunohistochemistry: Formalin-fixed and paraffin-embedded Human tonsil tissue. Antigen Retrieval: Heat mediation. The tissue section was stained with ARG66779 anti-RAB38 antibody at 1:100 dilution.



ARG66779 anti-RAB38 antibody WB image

Western blot: Jurkat cell lysates stained with ARG66779 anti-RAB38 antibody. The lane on the right is blocked with the synthetic peptide.