

ARG66791 anti-Epsin 3 antibody

Package: 100 µg
Store at: -20°C

Summary

Product Description	Rabbit Polyclonal antibody recognizes Epsin 3
Tested Reactivity	Hu
Tested Application	IHC-P, WB
Host	Rabbit
Clonality	Polyclonal
Isotype	IgG
Target Name	Epsin 3
Species	Human
Immunogen	Synthetic peptide between aa. 401-450 of Human Epsin 3.
Conjugation	Un-conjugated
Alternate Names	Epsin-3; EPS-15-interacting protein 3

Application Instructions

Application table	Application	Dilution
	IHC-P	1:100 - 1:300
	WB	1:500 - 1:2000
Application Note	* The dilutions indicate recommended starting dilutions and the optimal dilutions or concentrations should be determined by the scientist.	
Positive Control	COLO205	
Observed Size	~ 68 kDa	

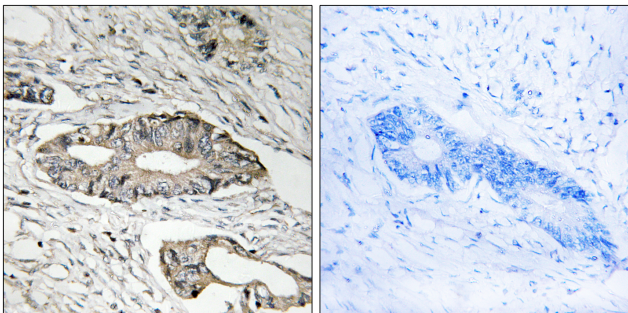
Properties

Form	Liquid
Purification	Affinity purification with immunogen.
Buffer	PBS, 0.02% Sodium azide, 50% Glycerol and 0.5% BSA.
Preservative	0.02% Sodium azide
Stabilizer	50% Glycerol and 0.5% BSA
Concentration	1 mg/ml
Storage instruction	For continuous use, store undiluted antibody at 2-8°C for up to a week. For long-term storage, aliquot and store at -20°C. Storage in frost free freezers is not recommended. Avoid repeated freeze/thaw cycles. Suggest spin the vial prior to opening. The antibody solution should be gently mixed before use.

Bioinformation

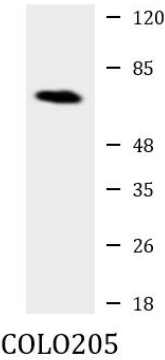
Gene Symbol	EPN3
Gene Full Name	epsin 3
Calculated Mw	68 kDa
Cellular Localization	Cytoplasm. Cytoplasm, perinuclear region. Cytoplasmic vesicle, clathrin-coated vesicle. Nucleus. Note=Concentrated in the perinuclear region and associated with clathrin-coated vesicles close to the cell periphery. May shuttle to the nucleus. [UniProt]

Images



ARG66791 anti-Epsin 3 antibody IHC-P image

Immunohistochemistry: Paraffin-embedded Human colon carcinoma tissue stained with ARG66791 anti-Epsin 3 antibody. The picture on the right is blocked with the synthetic peptide.



ARG66791 anti-Epsin 3 antibody WB image

Western blot: COLO205 cell lysate stained with ARG66791 anti-Epsin 3 antibody.