

**ARG66793**  
**anti-Fibulin 2 antibody**Package: 100 µl  
Store at: -20°C

### Summary

Product Description	Rabbit Polyclonal antibody recognizes Fibulin 2
Tested Reactivity	Hu, Ms, Rat
Tested Application	WB
Host	Rabbit
Clonality	Polyclonal
Isotype	IgG
Target Name	Fibulin 2
Species	Human
Immunogen	KLH-conjugated synthetic peptide within the center region of Human Fibulin 2.
Conjugation	Un-conjugated
Alternate Names	FIBL-2; Fibulin-2

### Application Instructions

Application table	Application	Dilution
	WB	1:500 - 1:1000
Application Note	* The dilutions indicate recommended starting dilutions and the optimal dilutions or concentrations should be determined by the scientist.	
Positive Control	HeLa, SP2/O and H9C2	
Observed Size	~ 180 kDa	

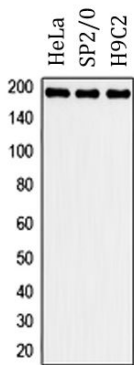
### Properties

Form	Liquid
Purification	Affinity purification with immunogen.
Buffer	0.42% Potassium phosphate (pH 7.3), 0.87% NaCl, 0.01% Sodium azide and 30% Glycerol.
Preservative	0.01% Sodium azide
Stabilizer	30% Glycerol
Storage instruction	For continuous use, store undiluted antibody at 2-8°C for up to a week. For long-term storage, aliquot and store at -20°C. Storage in frost free freezers is not recommended. Avoid repeated freeze/thaw cycles. Suggest spin the vial prior to opening. The antibody solution should be gently mixed before use.
Note	For laboratory research only, not for drug, diagnostic or other use.

Bioinformation

Gene Symbol	FBLN2
Gene Full Name	fibulin 2
Background	This gene encodes an extracellular matrix protein, which belongs to the fibulin family. This protein binds various extracellular ligands and calcium. It may play a role during organ development, in particular, during the differentiation of heart, skeletal and neuronal structures. Alternatively spliced transcript variants encoding different isoforms have been identified. [provided by RefSeq, Jul 2008]
Function	Its binding to fibronectin and some other ligands is calcium dependent. May act as an adapter that mediates the interaction between FBN1 and ELN (PubMed:17255108). [UniProt]
Calculated Mw	127 kDa
PTM	O-glycosylated with core 1 or possibly core 8 glycans. It is unsure if the O-glycosylation is on Thr-347 or Ser-348. [UniProt]
Cellular Localization	Secreted, extracellular space, extracellular matrix. [UniProt]

Images



ARG66793 anti-Fibulin 2 antibody WB image

Western blot: HeLa, SP2/O and H9C2 whole cell lysates stained with ARG66793 anti-Fibulin 2 antibody.