

ARG66811 anti-HMW Cytokeratin antibody [SQab20224]

Package: 100 µl

Store at: -20°C

Summary

Product Description	Recombinant Rabbit Monoclonal antibody [SQab20224] recognizes HMW Cytokeratin
Tested Reactivity	Hu
Tested Application	IHC-P
Host	Rabbit
Clonality	Monoclonal
Clone	SQab20224
Isotype	IgG
Target Name	HMW Cytokeratin
Species	Human
Immunogen	Synthetic peptide within aa. 200-300 of Human Cytokeratin 1 and synthetic peptide within aa. 490-590 of Human Cytokeratin 5.
Conjugation	Un-conjugated
Alternate Names	KRT1: 67 kDa cytokeratin; KRT1A; EPPK; Keratin, type II cytoskeletal 1; EHK1; K1; Keratin-1; CK1; Cytokeratin-1; Hair alpha protein; Type-II keratin Kb1; CK-1; NEPPK; EHK KRT5: DDD1; 58 kDa cytokeratin; Keratin, type II cytoskeletal 5; EBS2; Keratin-5; Cytokeratin-5; CK5; KRT5A; K5; CK-5; Type-II keratin Kb5; DDD

Application Instructions

Application table	Application	Dilution
	IHC-P	1:100 - 1:200
Application Note	IHC-P: Antigen Retrieval: Heat mediation was performed in Tris/EDTA buffer (pH 9.0), primary antibody incubate at RT (18°C - 25°C) for 30 minutes. * The dilutions indicate recommended starting dilutions and the optimal dilutions or concentrations should be determined by the scientist.	

Properties

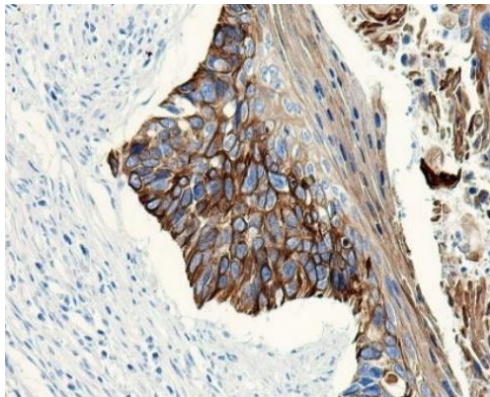
Form	Liquid
Purification	Purification with Protein A.
Buffer	PBS, 0.01% Sodium azide, 40% Glycerol and 0.05% BSA.
Preservative	0.01% Sodium azide
Stabilizer	40% Glycerol and 0.05% BSA
Storage instruction	For continuous use, store undiluted antibody at 2-8°C for up to a week. For long-term storage, aliquot and store at -20°C. Storage in frost free freezers is not recommended. Avoid repeated freeze/thaw cycles. Suggest spin the vial prior to opening. The antibody solution should be gently mixed before use.

Note For laboratory research only, not for drug, diagnostic or other use.

Bioinformation

Gene Symbol	KRT1; KRT5
Gene Full Name	keratin 1, type II; keratin 5, type II
Background	<p>KRT1: The protein encoded by this gene is a member of the keratin gene family. The type II cytokeratins consist of basic or neutral proteins which are arranged in pairs of heterotypic keratin chains coexpressed during differentiation of simple and stratified epithelial tissues. This type II cytokeratin is specifically expressed in the spinous and granular layers of the epidermis with family member KRT10 and mutations in these genes have been associated with bullous congenital ichthyosiform erythroderma. The type II cytokeratins are clustered in a region of chromosome 12q12-q13. [provided by RefSeq, Jul 2008]</p> <p>KRT5: The protein encoded by this gene is a member of the keratin gene family. The type II cytokeratins consist of basic or neutral proteins which are arranged in pairs of heterotypic keratin chains coexpressed during differentiation of simple and stratified epithelial tissues. This type II cytokeratin is specifically expressed in the basal layer of the epidermis with family member KRT14. Mutations in these genes have been associated with a complex of diseases termed epidermolysis bullosa simplex. The type II cytokeratins are clustered in a region of chromosome 12q12-q13. [provided by RefSeq, Jul 2008]</p>
Function	KRT1: May regulate the activity of kinases such as PKC and SRC via binding to integrin beta-1 (ITB1) and the receptor of activated protein C kinase 1 (RACK1). In complex with C1QBP is a high affinity receptor for kininogen-1/HMWK. [UniProt]
Calculated Mw	66 kDa
PTM	KRT1: Undergoes deimination of some arginine residues (citrullination). [UniProt]
Cellular Localization	KRT1: Cell membrane. Note=Located on plasma membrane of neuroblastoma NMB7 cells. [UniProt]

Images



ARG66811 anti-HMW Cytokeratin antibody [SQab20224] IHC-P image

Immunohistochemistry: Formalin/PFA-fixed and paraffin-embedded Human esophagus carcinoma tissue. Antigen Retrieval: Heat mediation was performed in Tris/EDTA buffer (pH 9.0). The tissue section was stained with ARG66811 anti-HMW Cytokeratin antibody [SQab20224].