

## ARG66825 anti-CD146 antibody [SQab20237]

Package: 100 µl  
Store at: -20°C

### Summary

Product Description	Recombinant Rabbit Monoclonal antibody [SQab20237] recognizes CD146
Tested Reactivity	Hu
Tested Application	IHC-P, WB
Host	Rabbit
Clonality	Monoclonal
Clone	SQab20237
Isotype	IgG
Target Name	CD146
Species	Human
Immunogen	Human CD146.
Conjugation	Un-conjugated
Alternate Names	Cell surface glycoprotein P1H12; Melanoma-associated antigen A32; Melanoma-associated antigen MUC18; Cell surface glycoprotein MUC18; Melanoma cell adhesion molecule; CD146; MUC18; CD antigen CD146; S-endo 1 endothelial-associated antigen

### Application Instructions

Application table	Application	Dilution
	IHC-P	1:100 - 1:200
	WB	1:500 - 1:2000
Application Note	IHC-P: Antigen Retrieval: Heat mediation was performed in Tris/EDTA buffer (pH 9.0), primary antibody incubate at RT (18°C - 25°C) for 30 minutes. * The dilutions indicate recommended starting dilutions and the optimal dilutions or concentrations should be determined by the scientist.	
Observed Size	120 kDa	

### Properties

Form	Liquid
Purification	Purification with Protein A.
Buffer	PBS, 0.01% Sodium azide, 40% Glycerol and 0.05% BSA.
Preservative	0.01% Sodium azide
Stabilizer	40% Glycerol and 0.05% BSA
Storage instruction	For continuous use, store undiluted antibody at 2-8°C for up to a week. For long-term storage, aliquot and store at -20°C. Storage in frost free freezers is not recommended. Avoid repeated freeze/thaw

cycles. Suggest spin the vial prior to opening. The antibody solution should be gently mixed before use.

**Note**

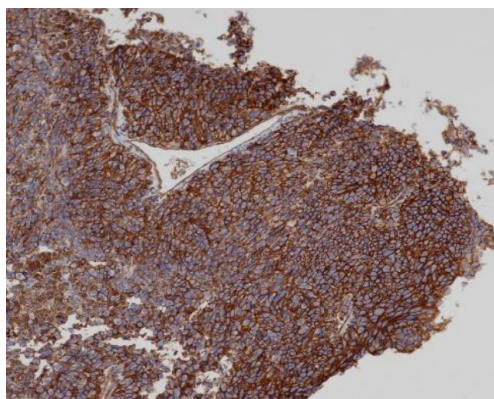
For laboratory research only, not for drug, diagnostic or other use.

## Bioinformation

---

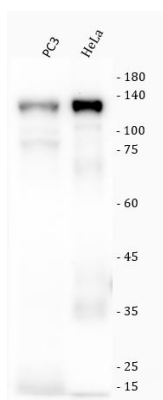
Gene Symbol	MCAM
Gene Full Name	melanoma cell adhesion molecule
Function	Plays a role in cell adhesion, and in cohesion of the endothelial monolayer at intercellular junctions in vascular tissue. Its expression may allow melanoma cells to interact with cellular elements of the vascular system, thereby enhancing hematogeneous tumor spread. Could be an adhesion molecule active in neural crest cells during embryonic development. Acts as surface receptor that triggers tyrosine phosphorylation of FYN and PTK2/FAK1, and a transient increase in the intracellular calcium concentration. [UniProt]
Calculated Mw	72 kDa
Cellular Localization	Membrane; Single-pass type I membrane protein. [UniProt]

## Images



ARG66825 anti-CD146 antibody [SQab20237] IHC-P image

Immunohistochemistry: Formalin/PFA-fixed and paraffin-embedded Human melanoma tissue. Antigen Retrieval: Heat mediation was performed in Tris/EDTA buffer (pH 9.0). The tissue section was stained with ARG66825 anti-CD146 antibody [SQab20237].



ARG66825 anti-CD146 antibody [SQab20237] WB image (Customer review)

Western blot: PC3 and HeLa stained with ARG66825 anti-CD146 antibody [SQab20237] at 1:500 dilution.