

## ARG66854 anti-NADH2 / MT-ND2 antibody

Package: 100 µg  
Store at: -20°C

### Summary

Product Description	Rabbit Polyclonal antibody recognizes NADH2 / MT-ND2
Tested Reactivity	Hu
Tested Application	WB
Host	Rabbit
Clonality	Polyclonal
Isotype	IgG
Target Name	NADH2 / MT-ND2
Species	Human
Immunogen	Synthetic peptide between aa. 40-120 of Human NADH2 / MT-ND2.
Conjugation	Un-conjugated
Alternate Names	NADH-ubiquinone oxidoreductase chain 2; ND2; MTND2; EC 1.6.5.3; NADH dehydrogenase subunit 2

### Application Instructions

Application table	<table> <tr> <th>Application</th><th>Dilution</th></tr> <tr> <td>WB</td><td>1:500 - 1:2000</td></tr> </table>	Application	Dilution	WB	1:500 - 1:2000
Application	Dilution				
WB	1:500 - 1:2000				
Application Note	* The dilutions indicate recommended starting dilutions and the optimal dilutions or concentrations should be determined by the scientist.				
Positive Control	SH-SY5Y				
Observed Size	~ 39 kDa				

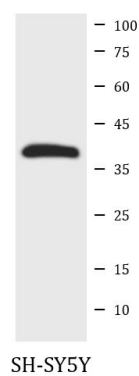
### Properties

Form	Liquid
Purification	Affinity purification with immunogen.
Buffer	PBS, 0.02% Sodium azide and 50% Glycerol.
Preservative	0.02% Sodium azide
Stabilizer	50% Glycerol
Concentration	1 mg/ml
Storage instruction	For continuous use, store undiluted antibody at 2-8°C for up to a week. For long-term storage, aliquot and store at -20°C. Storage in frost free freezers is not recommended. Avoid repeated freeze/thaw cycles. Suggest spin the vial prior to opening. The antibody solution should be gently mixed before use.
Note	For laboratory research only, not for drug, diagnostic or other use.

Bioinformation

Gene Symbol	MT-ND2
Gene Full Name	mitochondrially encoded NADH dehydrogenase 2
Function	Core subunit of the mitochondrial membrane respiratory chain NADH dehydrogenase (Complex I) that is believed to belong to the minimal assembly required for catalysis. Complex I functions in the transfer of electrons from NADH to the respiratory chain. The immediate electron acceptor for the enzyme is believed to be ubiquinone (By similarity). [UniProt]
Calculated Mw	39 kDa
Cellular Localization	Mitochondrion inner membrane; Multi-pass membrane protein. [UniProt]

Images



ARG66854 anti-NADH2 / MT-ND2 antibody WB image

Western blot: SH-SY5Y cell lysate stained with ARG66854 anti-NADH2 / MT-ND2 antibody at 1:1000 dilution, overnight at 4°C.