

## ARG66855 anti-ZFP42 / Rex1 antibody

Package: 100 µg  
Store at: -20°C

### Summary

Product Description	Rabbit Polyclonal antibody recognizes ZFP42 / Rex1
Tested Reactivity	Hu
Predict Reactivity	Ms
Tested Application	WB
Host	Rabbit
Clonality	Polyclonal
Isotype	IgG
Target Name	ZFP42 / Rex1
Species	Human
Immunogen	Synthetic peptide between aa. 70-150 of Human ZFP42 / Rex1.
Conjugation	Un-conjugated
Alternate Names	Zinc finger protein 42 homolog; hREX-1; Reduced expression protein 1; Zfp-42; REX1; Zinc finger protein 754; ZNF754; REX-1; zfp-42

### Application Instructions

Application table	Application	Dilution
	WB	1:500 - 1:2000
Application Note	* The dilutions indicate recommended starting dilutions and the optimal dilutions or concentrations should be determined by the scientist.	
Positive Control	K562	
Observed Size	~ 34 kDa	

### Properties

Form	Liquid
Purification	Affinity purification with immunogen.
Buffer	PBS, 0.02% Sodium azide and 50% Glycerol.
Preservative	0.02% Sodium azide
Stabilizer	50% Glycerol
Concentration	1 mg/ml
Storage instruction	For continuous use, store undiluted antibody at 2-8°C for up to a week. For long-term storage, aliquot and store at -20°C. Storage in frost free freezers is not recommended. Avoid repeated freeze/thaw cycles. Suggest spin the vial prior to opening. The antibody solution should be gently mixed before use.

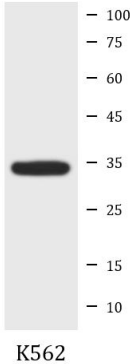
Note

For laboratory research only, not for drug, diagnostic or other use.

Bioinformation

Gene Symbol	ZFP42
Gene Full Name	ZFP42 zinc finger protein
Function	Involved in the reprogramming of X-chromosome inactivation during the acquisition of pluripotency. Required for efficient elongation of TSIX, a non-coding RNA antisense to XIST. Binds DXPas34 enhancer within the TSIX promoter. Involved in ES cell self-renewal (By similarity). [UniProt]
Calculated Mw	35 kDa
PTM	Polyubiquitinated by RNF12, leading to proteasomal degradation. [UniProt]
Cellular Localization	Nucleus. [UniProt]

Images



ARG66855 anti-ZFP42 / Rex1 antibody WB image

Western blot: K562 cell lysate stained with ARG66855 anti-ZFP42 / Rex1 antibody at 1:1000 dilution, overnight at 4°C.